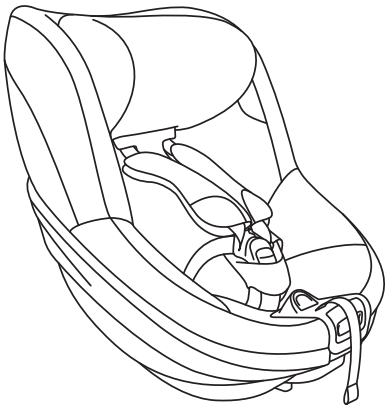






QUICK GUIDE

BeSafe®



Beyond

-  Rear facing
-  61 - 125 cm
-  Age approx.: 6 months - 6 yrs
-  Max. weight: 22 kg

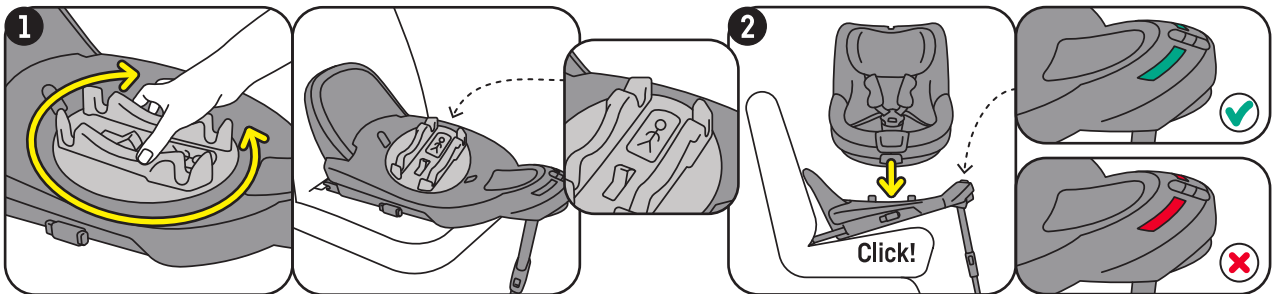


<https://hello.besafe.com/en/support/besafe-beyond>

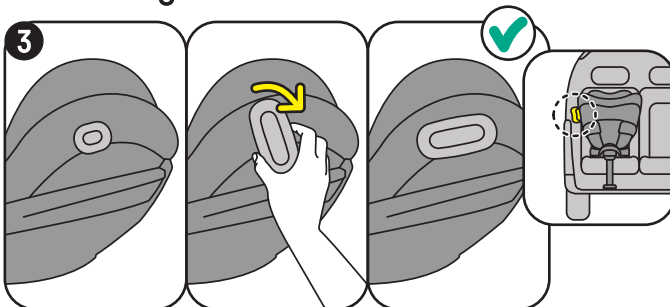


support.global@besafe.com

Installation on the BeSafe Beyond base



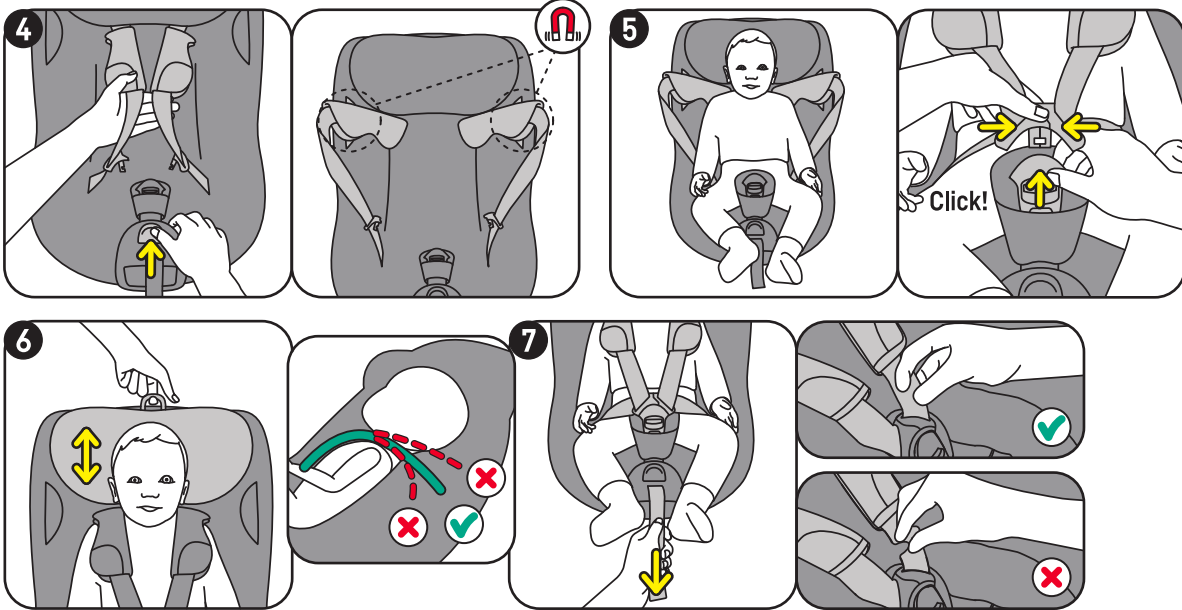
Attaching the SIP+



This Quick Guide is made of polypropylene.
Please recycle according to your local regulations.

B2002_7008 2023 09 26

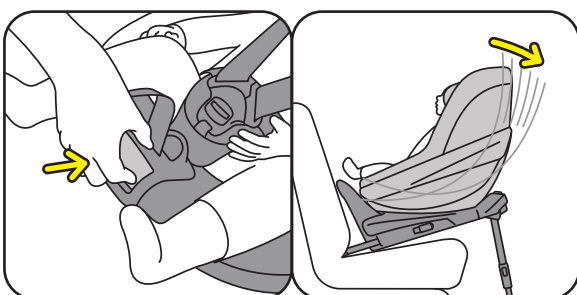
Adjusting the seat to fit the child



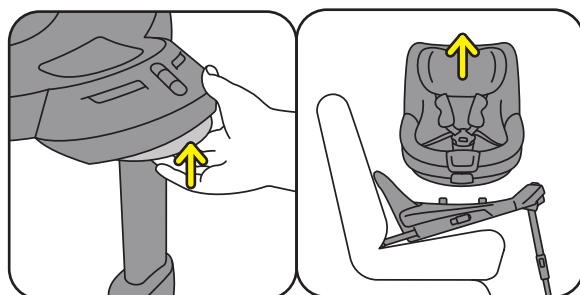
Rotating the seat



Reclining the seat



Removing the seat from the base



Usage positions

