

TEST REPORT

Report No.: GZES210100048801

Date: 2021-01-29

The following sample(s) was/were submitted and identified on behalf of the client as:

Applicant: Tiny Love Ltd
Korendijk 5, NL-5704 RD, Helmond

Manufacturer: Winfield Industrial Ltd
TangJiao, XiaKeng Village, Chashan Town, Dongguan, Guangdong, China

Testing location/address: SGS-CSTC Standards Technical Services Co., Ltd. Guangzhou Branch
198 Kezhu Road, Science City, Economic & Technology Development Area,
Guangzhou, Guangdong, China

The standards: EN 60598-2-10: 2003 used in conjunction with EN 60598-1: 2015 + A1: 2018
EN 62493: 2015

Test item description: BOHO CHIC TINY DREAMER

Trade Mark:

Model/Type reference: 130680E001

Ratings: 5 V ---; Max.0,5 W

Test result: In the opinion of SGS – CSTC the presented appliance was found to be in compliance with the test specification as indicated in the details on the following pages.

Remark: Throughout this report a comma is used as the decimal separator.
When determining for test conclusion, measurement uncertainty of tests has been considered.
This is a commission test report.

Sadie Jiang
Reviewer
E&E Safety Laboratory

Ryan Zhang
Project Engineer



Unless otherwise agreed in writing, this document is issued by the Company subject to its General Conditions of Service printed overleaf, available on request or accessible at <http://www.sgs.com/en/Terms-and-Conditions.aspx> and, for electronic format documents, subject to Terms and Conditions for Electronic Documents at <http://www.sgs.com/en/Terms-and-Conditions/Terms-e-Documents.aspx>. Attention is drawn to the limitation of liability, indemnification and jurisdiction issues defined therein. Any holder of this document is advised that information contained hereon reflects the Company's findings at the time of its intervention only and within the limits of Client's instructions, if any. The Company's sole responsibility is to its Client and this document does not exonerate parties to a transaction from exercising all their rights and obligations under the transaction documents. This document cannot be reproduced except in full, without prior written approval of the Company. Any unauthorized alteration, forgery or falsification of the content or appearance of this document is unlawful and offenders may be prosecuted to the fullest extent of the law. Unless otherwise stated the results shown in this test report refer only to the sample(s) tested and such sample(s) are retained for 30 days only.

Attention: To check the authenticity of testing / inspection report & certificate, please contact us at telephone: (86-755) 8307 1443, or email: CN.Doccheck@sgs.com
SGS-CSTC Standards Technical Services Co., Ltd. No.198 Kezhu Road, Sciencetech Park, Guangzhou Economic & Technology Development District, Guangzhou, China 510663 t (86-20) 82155555 f (86-20) 82075058 www.sgsgroup.com.cn
Guangzhou Branch, Inspection & Testing Services Co., Ltd. EEC Laboratory. 中国·广州·经济技术开发区科学城科珠路198号 邮编: 510663 t (86-20) 82155555 f (86-20) 82075058 sgs.china@sgs.com

Member of the SGS Group (SGS SA)

TEST REPORT

Report No.: GZES210100048801

Date: 2021-01-29

Copy of marking plate

The artwork below may be only a draft. The use of certification marks on a product must be authorized by the respective NCBs that own these marks.

The marking plate refer to SGS report SZES210100011701.

Summary of testing:

1. The submitted appliances fulfil the requirements of relevant standards for luminaire EN 60598-2-10: 2003 and EN 60598-1: 2015 + A1: 2018.
2. The submitted appliance with lighting source was found to be in compliance with the standard EN 62493: 2015 according to the clause 4.2.2.
3. The submitted test samples were found to be in compliance with the standard EN 61347-2-11: 2001 + A1:2019 used with EN 61347-1:2015, the test result was positive.
4. The luminaire was judged as RG0 LED product in the retinal blue light hazard according to IEC TR 62778: 2014.
5. The LED module was selected to be tested according to the standard EN 62031: 2008 + A1: 2013 + A2: 2015, and test result was positive.
6. The switch has been evaluated according to clause 17 Endurance of EN 61058-1: 2002 + A2: 2008, and because the current passing through the switch less than 20 mA, no electrical endurance test was necessary for the switch.
7. The music function was tested according to EN 62368: 2014 + A11: 2017 in the report SZES210100011701. This report should be used together with the test report SZES210100011701.
8. The lithium battery with model 603450 (3,7 Vd.c., 1000 mAh) was separately evaluated according to standard IEC 62133-2: 2017, and the validity of test data in submitted battery test report was not confirmed in this test report.



Unless otherwise agreed in writing, this document is issued by the Company subject to its General Conditions of Service printed overleaf, available on request or accessible at <http://www.sgs.com/en/Terms-and-Conditions.aspx> and, for electronic format documents, subject to Terms and Conditions for Electronic Documents at <http://www.sgs.com/en/Terms-and-Conditions/Terms-e-Documents.aspx>. Attention is drawn to the limitation of liability, indemnification and jurisdiction issues defined therein. Any holder of this document is advised that information contained hereon reflects the Company's findings at the time of its intervention only and within the limits of Client's instructions, if any. The Company's sole responsibility is to its Client and this document does not exonerate parties to a transaction from exercising all their rights and obligations under the transaction documents. This document cannot be reproduced except in full, without prior written approval of the Company. Any unauthorized alteration, forgery or falsification of the content or appearance of this document is unlawful and offenders may be prosecuted to the fullest extent of the law. Unless otherwise stated the results shown in this test report refer only to the sample(s) tested and such sample(s) are retained for 30 days only.

Attention: To check the authenticity of testing / inspection report & certificate, please contact us at telephone: (86-755) 8307 1443, or email: CN.Doccheck@sgs.com
 SGS-CS Standards Technical Services Co., Ltd. No.198 Kezhu Road, Sciencetech Park, Guangzhou Economic & Technology Development District, Guangzhou, China 510663 t (86-20) 82155555 f (86-20) 82075058 www.sgsgroup.com.cn
 Guangzhou Branch Test Services Co., Ltd. IEC Laboratory. 中国·广州·经济技术开发区科学城科珠路198号 邮编: 510663 t (86-20) 82155555 f (86-20) 82075058 sgs.china@sgs.com

Member of the SGS Group (SGS SA)

TEST REPORT

Report No.: GZES210100048801

Date: 2021-01-29

Test item particulars	BOHO CHIC TINY DREAMER
Equipment mobility.....	Portable
Operating condition.....	Continuous
Class of equipment.....	Class III
Degree of protection	IP20
Mass of equipment.....	0,24 kg
Supply construction.....	SELV connector (Micro USB connector)
Possible test case verdicts:	
- test case does not apply to the test object	N/A (not applicable)
- test object does meet the requirement	P (Pass)
- test object does not meet the requirement	F (Fail)
Testing	
Date of receipt of test item	2021-01-07
Date (s) of performance of tests.....	2021-01-12 to 2021-01-22
General product information:	
<ol style="list-style-type: none"> 1. LED portable luminaire, powered by a SELV connector (Micro USB connector), non-replaceable LED light source used, Class III, IP20; for indoor use only. 2. The luminaires shall be supplied by an independent SELV LED driver which was approved according to standard EN 61347-2-13, and <ul style="list-style-type: none"> - the output voltage, output current and output power shall be comply with the luminaire's ratings; - the IP degree of LED driver shall be same as the luminaire at least. 	



Unless otherwise agreed in writing, this document is issued by the Company subject to its General Conditions of Service printed overleaf, available on request or accessible at <http://www.sgs.com/en/Terms-and-Conditions.aspx> and, for electronic format documents, subject to Terms and Conditions for Electronic Documents at <http://www.sgs.com/en/Terms-and-Conditions/Terms-e-Documents.aspx>. Attention is drawn to the limitation of liability, indemnification and jurisdiction issues defined therein. Any holder of this document is advised that information contained hereon reflects the Company's findings at the time of its intervention only and within the limits of Client's instructions, if any. The Company's sole responsibility is to its Client and this document does not exonerate parties to a transaction from exercising all their rights and obligations under the transaction documents. This document cannot be reproduced except in full, without prior written approval of the Company. Any unauthorized alteration, forgery or falsification of the content or appearance of this document is unlawful and offenders may be prosecuted to the fullest extent of the law. Unless otherwise stated the results shown in this test report refer only to the sample(s) tested and such sample(s) are retained for 30 days only.

Attention: To check the authenticity of testing / inspection report & certificate, please contact us at telephone: (86-755) 8307 1443, or email: CN.Doccheck@sgs.com

SGS-CS Standards Technical Services Co., Ltd. No.198 Kezhu Road, Sciencetech Park, Guangzhou Economic & Technology Development District, Guangzhou, China 510663 t (86-20) 82155555 f (86-20) 82075058 www.sgsgroup.com.cn
 Guangzhou Branch Test Services Co., Ltd. EEC Laboratory. 中国·广州·经济技术开发区科学城科珠路198号 邮编: 510663 t (86-20) 82155555 f (86-20) 82075058 sgs.china@sgs.com

Member of the SGS Group (SGS SA)

TEST REPORT

Report No.: GZES210100048801

Date: 2021-01-29

Test Results:

EN 60598-2-10		
Clause	Remarks	Verdict
10.1 General		Info.
10.2 General test requirements		Info.
10.3 Definitions		Info.
10.4 Classification	Class III	Info.
10.5 Marking		Info.
10.6 Construction		P
10.7 Creepage distances and clearances		P
10.8 Provision for earthing		N/A
10.9 Terminals		N/A
10.10 External and internal wiring		P
10.11 Protection against electric shock		P
10.12 Endurance tests and thermal tests		P
10.13 Resistance to dust and moisture		P
10.14 Insulation resistance and electric strength		P
10.15 Resistance to heat, fire and tracking		P
Annex ZB Special national conditions		N/A
Annex ZC A-deviation		N/A



Unless otherwise agreed in writing, this document is issued by the Company subject to its General Conditions of Service printed overleaf, available on request or accessible at <http://www.sgs.com/en/Terms-and-Conditions.aspx> and, for electronic format documents, subject to Terms and Conditions for Electronic Documents at <http://www.sgs.com/en/Terms-and-Conditions/Terms-e-Documents.aspx>. Attention is drawn to the limitation of liability, indemnification and jurisdiction issues defined therein. Any holder of this document is advised that information contained hereon reflects the Company's findings at the time of its intervention only and within the limits of Client's instructions, if any. The Company's sole responsibility is to its Client and this document does not exonerate parties to a transaction from exercising all their rights and obligations under the transaction documents. This document cannot be reproduced except in full, without prior written approval of the Company. Any unauthorized alteration, forgery or falsification of the content or appearance of this document is unlawful and offenders may be prosecuted to the fullest extent of the law. Unless otherwise stated the results shown in this test report refer only to the sample(s) tested and such sample(s) are retained for 30 days only.

Attention: To check the authenticity of testing / inspection report & certificate, please contact us at telephone: (86-755) 8307 1443, or email: CN.Doccheck@sgs.com

SGS-CSI Standards Technical Services Co., Ltd. No.198 Kezhu Road, Sciencetech Park, Guangzhou Economic & Technology Development District, Guangzhou, China 510663 t (86-20) 82155555 f (86-20) 82075058 www.sgsgroup.com.cn
 Guangzhou Branch Testing Services Co., Ltd. EEC Laboratory. 中国·广州·经济技术开发区科学城科珠路198号 邮编: 510663 t (86-20) 82155555 f (86-20) 82075058 sgs.china@sgs.com

Member of the SGS Group (SGS SA)

TEST REPORT

Report No.: GZES210100048801

Date: 2021-01-29

EN 61347-2-11		
Clause	Remarks	Verdict
1 Scope		Info.
2 Normative references		Info.
3 Definitions		Info.
4 General requirements		Info.
5 General notes on tests		Info.
6 Classification		Info.
7 Marking		N/A
8 Protection against accidental contact with live parts		N/A
9 Terminals		N/A
10 Provisions for earthing		N/A
11 Moisture resistance and insulation		P
12 Electric strength		P
14 Fault conditions		P
15 Construction		P
16 Creepage distances and clearances		N/A
17 Screws, current-carrying parts and connections		P
18 Resistance to heat, fire and tracking		P
19 Resistance to corrosion		N/A
Annex A Test to establish whether a conductive part is a live part which may cause an electric shock		N/A
Annex B (normative) Particular requirements for thermally protected lamp controlgear		N/A
Annex C (normative) Particular requirements for electronic lamp controlgear with means of protection against overheating		N/A



Unless otherwise agreed in writing, this document is issued by the Company subject to its General Conditions of Service printed overleaf, available on request or accessible at <http://www.sgs.com/en/Terms-and-Conditions.aspx> and, for electronic format documents, subject to Terms and Conditions for Electronic Documents at <http://www.sgs.com/en/Terms-and-Conditions/Terms-e-Documents.aspx>. Attention is drawn to the limitation of liability, indemnification and jurisdiction issues defined therein. Any holder of this document is advised that information contained hereon reflects the Company's findings at the time of its intervention only and within the limits of Client's instructions, if any. The Company's sole responsibility is to its Client and this document does not exonerate parties to a transaction from exercising all their rights and obligations under the transaction documents. This document cannot be reproduced except in full, without prior written approval of the Company. Any unauthorized alteration, forgery or falsification of the content or appearance of this document is unlawful and offenders may be prosecuted to the fullest extent of the law. Unless otherwise stated the results shown in this test report refer only to the sample(s) tested and such sample(s) are retained for 30 days only.

Attention: To check the authenticity of testing / inspection report & certificate, please contact us at telephone: (86-755) 8307 1443, or email: CN.Doccheck@sgs.com
 SGS-CS Standards Technical Services Co., Ltd. No.198 Kezhu Road, Sciencetech Park, Guangzhou Economic & Technology Development District, Guangzhou, China 510663 t (86-20) 82155555 f (86-20) 82075058 www.sgs.com.cn
 Guangzhou Branch Testing Services Co., Ltd. EEC Laboratory. 中国·广州·经济技术开发区科学城科珠路198号 邮编: 510663 t (86-20) 82155555 f (86-20) 82075058 sgs.china@sgs.com

Member of the SGS Group (SGS SA)

TEST REPORT

Report No.: GZES210100048801

Date: 2021-01-29

EN 61347-2-11		
Clause	Remarks	Verdict
Annex D (normative) Requirements for carrying out the heating tests of thermally protected lamp controlgear		N/A
Annex E (normative) Use of constant S other than 4 500 in t_w tests		N/A
Annex F (normative) Draught-proof enclosure		P
Annex G (normative) Explanation of the derivation of the values of pulse voltages		N/A
Annex H (normative) Tests		P
Annex I (normative) Additional requirements for built-in magnetic ballasts with double or reinforced insulation		N/A
Annex J (normative) Schedule of more onerous requirements		N/A
Annex K (informative) Conformity testing during manufacture		N/A
Annex L (normative) Particular additional requirements for controlgears providing SELV		N/A
Annex M (informative) Dielectric strength test voltages for controlgear intended for the use in impulse withstand Category III		N/A
Annex N (normative) Requirements for insulation materials used for double or reinforced insulation		N/A
Annex O (normative) Additional requirements for built-in electronic controlgear with double or reinforced insulation		N/A
Annex P (normative) Creepage distances and clearances and distance through isolation (DTI) for lamp controlgear which are protected against pollution by the use of coating or potting		N/A



Unless otherwise agreed in writing, this document is issued by the Company subject to its General Conditions of Service printed overleaf, available on request or accessible at <http://www.sgs.com/en/Terms-and-Conditions.aspx> and, for electronic format documents, subject to Terms and Conditions for Electronic Documents at <http://www.sgs.com/en/Terms-and-Conditions/Terms-e-Documents.aspx>. Attention is drawn to the limitation of liability, indemnification and jurisdiction issues defined therein. Any holder of this document is advised that information contained hereon reflects the Company's findings at the time of its intervention only and within the limits of Client's instructions, if any. The Company's sole responsibility is to its Client and this document does not exonerate parties to a transaction from exercising all their rights and obligations under the transaction documents. This document cannot be reproduced except in full, without prior written approval of the Company. Any unauthorized alteration, forgery or falsification of the content or appearance of this document is unlawful and offenders may be prosecuted to the fullest extent of the law. Unless otherwise stated the results shown in this test report refer only to the sample(s) tested and such sample(s) are retained for 30 days only.

Attention: To check the authenticity of testing / inspection report & certificate, please contact us at telephone: (86-755) 8307 1443, or email: CN.Doccheck@sgs.com

SGS-CTI Standards Technical Services Co., Ltd. No.198 Kezhu Road, Sciencetech Park, Guangzhou Economic & Technology Development District, Guangzhou, China 510663 t (86-20) 82155555 f (86-20) 82075058 www.sgs.com.cn
 Guangzhou Branch of SGS-CTI Services Co., Ltd. EEC Laboratory. 中国·广州·经济技术开发区科学城科珠路198号 邮编: 510663 t (86-20) 82155555 f (86-20) 82075058 sgs.china@sgs.com

Member of the SGS Group (SGS SA)

TEST REPORT

Report No.: GZES210100048801

Date: 2021-01-29

14	TABLE: tests of fault conditions	P
Part	Simulated fault	Hazard
U1	S/C, working as normal	NO
Q1	S/C, working as normal	NO
C3	S/C, unit shut down, can be recoverable	NO
One LED 1	O/C, LEDs except one LED lighted normally, can be recoverable	NO
One LED 1	S/C, unit shut down, can be recoverable	NO
One LED (B)	S/C, LEDs except one LED lighted normally, can be recoverable	NO
One LED (B)	O/C, LEDs except O/C LED lighted normally, can be recoverable	NO



Unless otherwise agreed in writing, this document is issued by the Company subject to its General Conditions of Service printed overleaf, available on request or accessible at <http://www.sgs.com/en/Terms-and-Conditions.aspx> and, for electronic format documents, subject to Terms and Conditions for Electronic Documents at <http://www.sgs.com/en/Terms-and-Conditions/Terms-e-Documents.aspx>. Attention is drawn to the limitation of liability, indemnification and jurisdiction issues defined therein. Any holder of this document is advised that information contained hereon reflects the Company's findings at the time of its intervention only and within the limits of Client's instructions, if any. The Company's sole responsibility is to its Client and this document does not exonerate parties to a transaction from exercising all their rights and obligations under the transaction documents. This document cannot be reproduced except in full, without prior written approval of the Company. Any unauthorized alteration, forgery or falsification of the content or appearance of this document is unlawful and offenders may be prosecuted to the fullest extent of the law. Unless otherwise stated the results shown in this test report refer only to the sample(s) tested and such sample(s) are retained for 30 days only.

Attention: To check the authenticity of testing / inspection report & certificate, please contact us at telephone: (86-755) 8307 1443, or email: CN.Doccheck@sgs.com

SGS-CTI Standards Technical Services Co., Ltd. | No.198 Kezhu Road, Sciencetech Park, Guangzhou Economic & Technology Development District, Guangzhou, China 510663 t (86-20) 82155555 f (86-20) 82075058 www.sgs.com.cn
 Guangzhou Branch, Testing Services Co., Ltd. EEC Laboratory. 中国·广州·经济技术开发区科学城科珠路198号 邮编: 510663 t (86-20) 82155555 f (86-20) 82075058 sgs.china@sgs.com

Member of the SGS Group (SGS SA)

TEST REPORT

Report No.: GZES210100048801

Date: 2021-01-29

EN IEC 62031 for LED module		
Clause	Remarks	Verdict
1 Scope		Info.
2 Normative references		Info.
3 Terms and definitions		Info.
4 General requirement	Integral	Info.
5 General test requirement		Info.
6 Marking		N/A
7 Terminals		N/A
8 Provisions for protective earthing		N/A
9 Protection against accidental contact with live parts		N/A
10 Moisture resistance and insulation		P
11 Electric strength		P
12 Fault conditions		P
13 Conformity testing during manufacture		N/A
14 Construction		P
15 Creepage distances and clearances		P
16 Screws, current-carrying parts and connections		P
17 Resistance to heat, fire and tracking		N/A
18 Resistance to corrosion		N/A
19 Information for luminaire design		N/A
20 Heat management		N/A
21 Photobiological safety	RG0	P



Unless otherwise agreed in writing, this document is issued by the Company subject to its General Conditions of Service printed overleaf, available on request or accessible at <http://www.sgs.com/en/Terms-and-Conditions.aspx> and, for electronic format documents, subject to Terms and Conditions for Electronic Documents at <http://www.sgs.com/en/Terms-and-Conditions/Terms-e-Documents.aspx>. Attention is drawn to the limitation of liability, indemnification and jurisdiction issues defined therein. Any holder of this document is advised that information contained hereon reflects the Company's findings at the time of its intervention only and within the limits of Client's instructions, if any. The Company's sole responsibility is to its Client and this document does not exonerate parties to a transaction from exercising all their rights and obligations under the transaction documents. This document cannot be reproduced except in full, without prior written approval of the Company. Any unauthorized alteration, forgery or falsification of the content or appearance of this document is unlawful and offenders may be prosecuted to the fullest extent of the law. Unless otherwise stated the results shown in this test report refer only to the sample(s) tested and such sample(s) are retained for 30 days only.

Attention: To check the authenticity of testing / inspection report & certificate, please contact us at telephone: (86-755) 8307 1443, or email: CN.Doccheck@sgs.com
 SGS-CS Standards Technical Services Co., Ltd. No.198 Kezhu Road, Sciencetech Park, Guangzhou Economic & Technology Development District, Guangzhou, China 510663 t (86-20) 82155555 f (86-20) 82075058 www.sgsgroup.com.cn
 Guangzhou Branch of SGS Technical Services Co., Ltd. EEC Laboratory. 中国·广州·经济技术开发区科学城科珠路198号 邮编: 510663 t (86-20) 82155555 f (86-20) 82075058 sgs.china@sgs.com

Member of the SGS Group (SGS SA)

TEST REPORT

Report No.: GZES210100048801

Date: 2021-01-29

EN 62493		
Clause	Remarks	Verdict
4. LIMITS (Test summary)		P
4.2.2 Lighting equipment deemed to comply with the Van der Hoofden test without testing		P
4.2.3 Unintentional radiating part of lighting equipment	factor $F \leq 1$	N/A
4.3 Intentional radiating part of lighting equipment	No intentional radiating from EUT	N/A



Unless otherwise agreed in writing, this document is issued by the Company subject to its General Conditions of Service printed overleaf, available on request or accessible at <http://www.sgs.com/en/Terms-and-Conditions.aspx> and, for electronic format documents, subject to Terms and Conditions for Electronic Documents at <http://www.sgs.com/en/Terms-and-Conditions/Terms-e-Documents.aspx>. Attention is drawn to the limitation of liability, indemnification and jurisdiction issues defined therein. Any holder of this document is advised that information contained hereon reflects the Company's findings at the time of its intervention only and within the limits of Client's instructions, if any. The Company's sole responsibility is to its Client and this document does not exonerate parties to a transaction from exercising all their rights and obligations under the transaction documents. This document cannot be reproduced except in full, without prior written approval of the Company. Any unauthorized alteration, forgery or falsification of the content or appearance of this document is unlawful and offenders may be prosecuted to the fullest extent of the law. Unless otherwise stated the results shown in this test report refer only to the sample(s) tested and such sample(s) are retained for 30 days only.

Attention: To check the authenticity of testing / inspection report & certificate, please contact us at telephone: (86-755) 8307 1443, or email: CN.Doccheck@sgs.com

SGS-CS Standards Technical Services Co., Ltd. | No.198 Kezhu Road, Sciencetech Park, Guangzhou Economic & Technology Development District, Guangzhou, China 510663 t (86-20) 82155555 f (86-20) 82075058 www.sgs.com.cn
 Guangzhou Branch, Testing Services Co., Ltd. EEC Laboratory. | 中国·广州·经济技术开发区科学城科珠路198号 邮编: 510663 t (86-20) 82155555 f (86-20) 82075058 sgs.china@sgs.com

Member of the SGS Group (SGS SA)

TEST REPORT

Report No.: GZES210100048801

Date: 2021-01-29

ANNEX 1: Components

object/part No.	Code	manufacturer/ trademark	type/model	technical data	standard	mark(s) of conformity
Plastic enclosure	B	Winfield	ABS 15A1	ASB	EN 60598-1 EN 60598-2-10	Tested with appliance
PCB	B	FASTLINE CIRCUITS CO LTD	FJ-1; FJ-D	V-0, 130 °C	EN 60598-1 EN 60598-2-10	UL E464342 &Tested with appliance
Battery wire	B	Jinfengsheng (Xinyi) Electronics Co., Ltd.	PVC	24AWG	EN 60598-1 EN 60598-2-10	Tested with appliance
Internal wire	B	Dongguan Xinfeng Electronic Wire Co., Ltd.	PE	Min.30 AWG	EN 60598-1 EN 60598-2-10	Tested with appliance
LED chip (3528)	B	DONG GUAN YI FENG XING YE ELECTRONICS CO.,LTD.	3528	VF: 3,0 - 3,4 V; IF: 20 mA; CCT.: 6000K; viewing angle: 120°	EN IEC 62031 IEC TR 62778	Tested with appliance
4.8mm Straw Hat Blue LED	B	Y.LIN ELECTRONICS CO., LTD.	YL4.8ABCS6C K32/L180-T	VF: 2,8 - 3,6 V; IF: 30 mA; Wavelength: 450 – 460 nm; viewing angle: 100°	EN IEC 62031 IEC TR 62778	Tested with appliance
4.8mm Straw Hat Orange LED	B	Y.LIN ELECTRONICS CO., LTD.	YL4.8AOCU3C K32/L180-T	VF: 1,8 – 2,4 V; IF: 25 mA; Wavelength: 600 – 610 nm; viewing angle: 100°	EN IEC 62031 IEC TR 62778	Tested with appliance



Unless otherwise agreed in writing, this document is issued by the Company subject to its General Conditions of Service printed overleaf, available on request or accessible at <http://www.sgs.com/en/Terms-and-Conditions.aspx> and, for electronic format documents, subject to Terms and Conditions for Electronic Documents at <http://www.sgs.com/en/Terms-and-Conditions/Terms-e-Documents.aspx>. Attention is drawn to the limitation of liability, indemnification and jurisdiction issues defined therein. Any holder of this document is advised that information contained hereon reflects the Company's findings at the time of its intervention only and within the limits of Client's instructions, if any. The Company's sole responsibility is to its Client and this document does not exonerate parties to a transaction from exercising all their rights and obligations under the transaction documents. This document cannot be reproduced except in full, without prior written approval of the Company. Any unauthorized alteration, forgery or falsification of the content or appearance of this document is unlawful and offenders may be prosecuted to the fullest extent of the law. Unless otherwise stated the results shown in this test report refer only to the sample(s) tested and such sample(s) are retained for 30 days only.

Attention: To check the authenticity of testing / inspection report & certificate, please contact us at telephone: (86-755) 8307 1443, or email: CN.Doccheck@sgs.com
 No.198 Kezhu Road, Sciencetech Park, Guangzhou Economic & Technology Development District, Guangzhou, China 510663 t (86-20) 82155555 f (86-20) 82075058 www.sgs.com.cn
 Guangzhou Branch Test Services Co., Ltd. EEC Laboratory. 中国·广州·经济技术开发区科学城科珠路198号 邮编: 510663 t (86-20) 82155555 f (86-20) 82075058 sgs.china@sgs.com

SGS-CSI Standards Technical Services Co., Ltd.
 Guangzhou Branch Test Services Co., Ltd. EEC Laboratory.

Member of the SGS Group (SGS SA)

TEST REPORT

Report No.: GZES210100048801

Date: 2021-01-29

4.8mm Hat Green Yellow LED	B	Y.LIN ELECTRONICS CO., LTD.	YL4.8AYCU3C K32/L180-T	VF: 1,8 – 2,4 V; IF: 25 mA; Wavelength: 585 – 596 nm; viewing angle: 100°	EN IEC 62031 IEC TR 62778	Tested with appliance
----------------------------------	---	-----------------------------------	---------------------------	--	------------------------------	--------------------------

The codes above have the following meaning:

- A - The component is replaceable with another one, also certified, with equivalent characteristics
- B - The component is replaceable if authorised by the test house
- C - Integrated component tested together with the appliance
- D - Alternative component



Unless otherwise agreed in writing, this document is issued by the Company subject to its General Conditions of Service printed overleaf, available on request or accessible at <http://www.sgs.com/en/Terms-and-Conditions.aspx> and, for electronic format documents, subject to Terms and Conditions for Electronic Documents at <http://www.sgs.com/en/Terms-and-Conditions/Terms-e-Documents.aspx>. Attention is drawn to the limitation of liability, indemnification and jurisdiction issues defined therein. Any holder of this document is advised that information contained hereon reflects the Company's findings at the time of its intervention only and within the limits of Client's instructions, if any. The Company's sole responsibility is to its Client and this document does not exonerate parties to a transaction from exercising all their rights and obligations under the transaction documents. This document cannot be reproduced except in full, without prior written approval of the Company. Any unauthorized alteration, forgery or falsification of the content or appearance of this document is unlawful and offenders may be prosecuted to the fullest extent of the law. Unless otherwise stated the results shown in this test report refer only to the sample(s) tested and such sample(s) are retained for 30 days only.

Attention: To check the authenticity of testing / inspection report & certificate, please contact us at telephone: (86-755) 8307 1443, or email: CN.Doccheck@sgs.com

SGS-CSI Standards Technical Services Co., Ltd. | No.198 Kezhu Road, Sciencetech Park, Guangzhou Economic & Technology Development District, Guangzhou, China 510663 t (86-20) 82155555 f (86-20) 82075058 www.sgsgroup.com.cn
 Guangzhou Branch Test Services Co., Ltd. IEC Laboratory. | 中国·广州·经济技术开发区科学城科珠路198号 邮编: 510663 t (86-20) 82155555 f (86-20) 82075058 sgs.china@sgs.com

Member of the SGS Group (SGS SA)

TEST REPORT

Report No.: GZES210100048801

Date: 2021-01-29

ANNEX 2: temperature measurements, thermal tests of Section 12

Type reference	130680E001	—
Lamp used.....	Non-replaceable LED light source	—
Lamp control gear used	—	—
Mounting position of luminaire	As in normal use	—
Supply wattage (W)	4,8 (at 5V)	—
Supply current (A)	0,960 (at 5V)	—
Calculated power factor	—	—
Table: measured temperatures corrected for ta = 25 °C:		
- abnormal operating mode	—	—
- test 1: rated voltage	—	—
- test 2: 1,06 times rated voltage or 1,05 times rated wattage	5V x 1,1 = 5,5V	—
- test 3: Load on wiring to socket-outlet, 1,06 times voltage or 1,05 times wattage	—	—
- test 4: 1,1 times rated voltage or 1,05 times rated wattage	—	—
Through wiring or looping-in wiring loaded by a current of A during the test	—	—
Test to determine suitability of conductors having a reduced cross-sectional area	—	—

temperature (°C) of part	Clause 12.4 – normal				Clause 12.5 – abnormal	
	test 1	test 2	test 3	limit	test 4	limit
USB wire	—	25,3	—	80	—	—
PCB near USB1	—	25,7	—	130	—	—
PCB near U1	—	45,9	—	130	—	—
PCB near LED 1	—	34,5	—	130	—	—
Button switch surface	—	25,4	—	75	—	—



Unless otherwise agreed in writing, this document is issued by the Company subject to its General Conditions of Service printed overleaf, available on request or accessible at <http://www.sgs.com/en/Terms-and-Conditions.aspx> and, for electronic format documents, subject to Terms and Conditions for Electronic Documents at <http://www.sgs.com/en/Terms-and-Conditions/Terms-e-Documents.aspx>. Attention is drawn to the limitation of liability, indemnification and jurisdiction issues defined therein. Any holder of this document is advised that information contained hereon reflects the Company's findings at the time of its intervention only and within the limits of Client's instructions, if any. The Company's sole responsibility is to its Client and this document does not exonerate parties to a transaction from exercising all their rights and obligations under the transaction documents. This document cannot be reproduced except in full, without prior written approval of the Company. Any unauthorized alteration, forgery or falsification of the content or appearance of this document is unlawful and offenders may be prosecuted to the fullest extent of the law. Unless otherwise stated the results shown in this test report refer only to the sample(s) tested and such sample(s) are retained for 30 days only.

Attention: To check the authenticity of testing / inspection report & certificate, please contact us at telephone: (86-755) 8307 1443, or email: CN.Doccheck@sgs.com
 SGS-CS Standards Technical Services Co., Ltd. No.198 Kezhu Road, Sciencetech Park, Guangzhou Economic & Technology Development District, Guangzhou, China 510663 t (86-20) 82155555 f (86-20) 82075058 www.sgsgroup.com.cn
 Guangzhou Branch Test Services EEC Laboratory. 中国·广州·经济技术开发区科学城科珠路198号 邮编: 510663 t (86-20) 82155555 f (86-20) 82075058 sgs.china@sgs.com

Member of the SGS Group (SGS SA)

TEST REPORT

Report No.: GZES210100048801

Date: 2021-01-29

Internal wire to battery	—	26,0	—	80	—	—
Battery surface	—	27,3	—	Ref.	—	—
Internal connector (CN1)	—	30,6	—	Ref.	—	—
Plastic enclosure (outside)	—	25,6	—	Ref.	—	—
Plastic enclosure (inside)	—	26,8	—	Ref.	—	—
Mounting surface	—	25,4	—	90	—	—
Lighted object (0,1 m)	—	25,4	—	90	—	—



Unless otherwise agreed in writing, this document is issued by the Company subject to its General Conditions of Service printed overleaf, available on request or accessible at <http://www.sgs.com/en/Terms-and-Conditions.aspx> and, for electronic format documents, subject to Terms and Conditions for Electronic Documents at <http://www.sgs.com/en/Terms-and-Conditions/Terms-e-Documents.aspx>. Attention is drawn to the limitation of liability, indemnification and jurisdiction issues defined therein. Any holder of this document is advised that information contained hereon reflects the Company's findings at the time of its intervention only and within the limits of Client's instructions, if any. The Company's sole responsibility is to its Client and this document does not exonerate parties to a transaction from exercising all their rights and obligations under the transaction documents. This document cannot be reproduced except in full, without prior written approval of the Company. Any unauthorized alteration, forgery or falsification of the content or appearance of this document is unlawful and offenders may be prosecuted to the fullest extent of the law. Unless otherwise stated the results shown in this test report refer only to the sample(s) tested and such sample(s) are retained for 30 days only.

Attention: To check the authenticity of testing / inspection report & certificate, please contact us at telephone: (86-755) 8307 1443, or email: CN.Doccheck@sgs.com

SGS-CS Standards Technical Services Co., Ltd. | No.198 Kezhu Road, Sciencetech Park, Guangzhou Economic & Technology Development District, Guangzhou, China 510663 t (86-20) 82155555 f (86-20) 82075058 www.sgsgroup.com.cn
 Guangzhou Branch, Testing Services, IEC Laboratory. | 中国·广州·经济技术开发区科学城科珠路198号 邮编: 510663 t (86-20) 82155555 f (86-20) 82075058 sgs.china@sgs.com

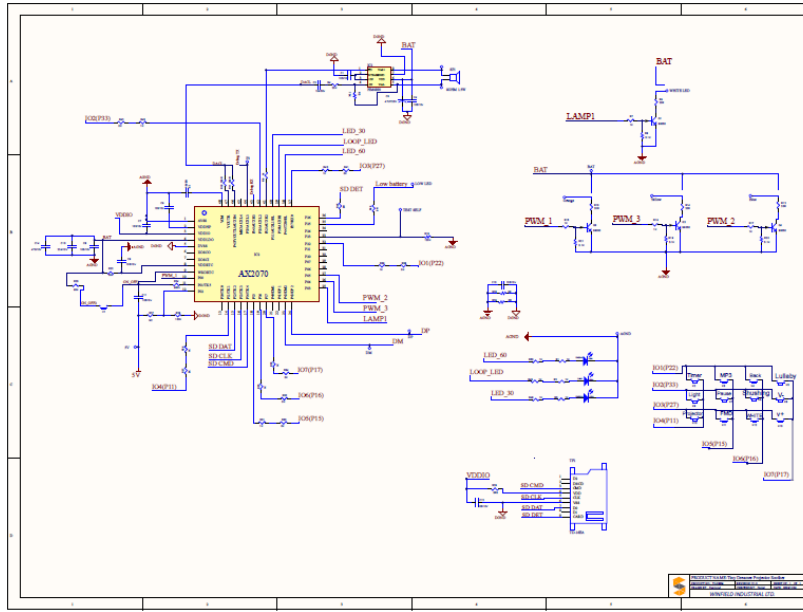
Member of the SGS Group (SGS SA)

TEST REPORT

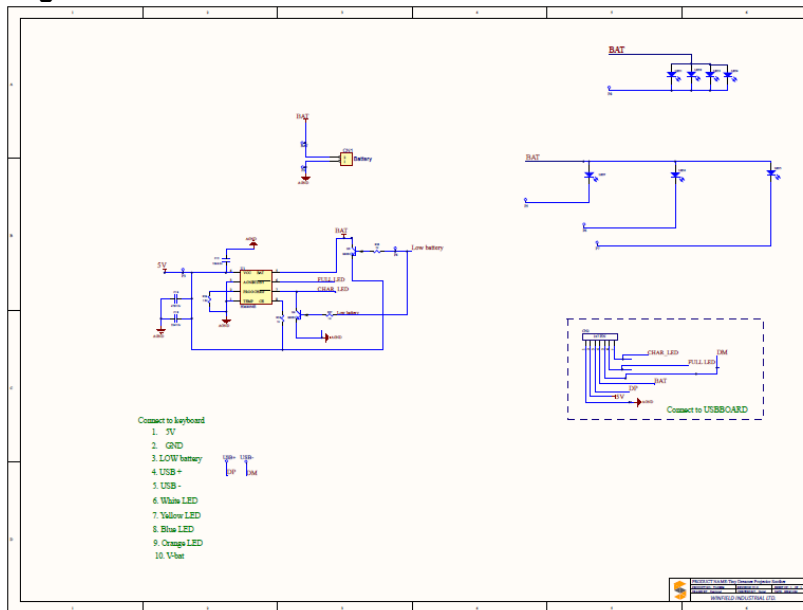
Report No.: GZES210100048801

Date: 2021-01-29

ANNEX 3: Schematic circuit diagram for main circuits



Schematic circuit diagram for LED board:



Unless otherwise agreed in writing, this document is issued by the Company subject to its General Conditions of Service printed overleaf, available on request or accessible at <http://www.sgs.com/en/Terms-and-Conditions.aspx> and, for electronic format documents, subject to Terms and Conditions for Electronic Documents at <http://www.sgs.com/en/Terms-and-Conditions/Terms-e-Documents.aspx>. Attention is drawn to the limitation of liability, indemnification and jurisdiction issues defined therein. Any holder of this document is advised that information contained hereon reflects the Company's findings at the time of its intervention only and within the limits of Client's instructions, if any. The Company's sole responsibility is to its Client and this document does not exonerate parties to a transaction from exercising all their rights and obligations under the transaction documents. This document cannot be reproduced except in full, without prior written approval of the Company. Any unauthorized alteration, forgery or falsification of the content or appearance of this document is unlawful and offenders may be prosecuted to the fullest extent of the law. Unless otherwise stated the results shown in this test report refer only to the sample(s) tested and such sample(s) are retained for 30 days only.

Attention: To check the authenticity of testing / inspection report & certificate, please contact us at telephone: (86-755) 8307 1443, or email: CN.Doccheck@sgs.com
 No.198 Kezhu Road, Sciencetech Park, Guangzhou Economic & Technology Development District, Guangzhou, China 510663 t (86-20) 82155555 f (86-20) 82075058 www.sgsgroup.com.cn
 中国·广州·经济技术开发区科学城科珠路198号 邮编: 510663 t (86-20) 82155555 f (86-20) 82075058 sgs.china@sgs.com

SGS-CTI Standards Technical Services Co., Ltd.
 Guangzhou Branch Test Services EEC Laboratory

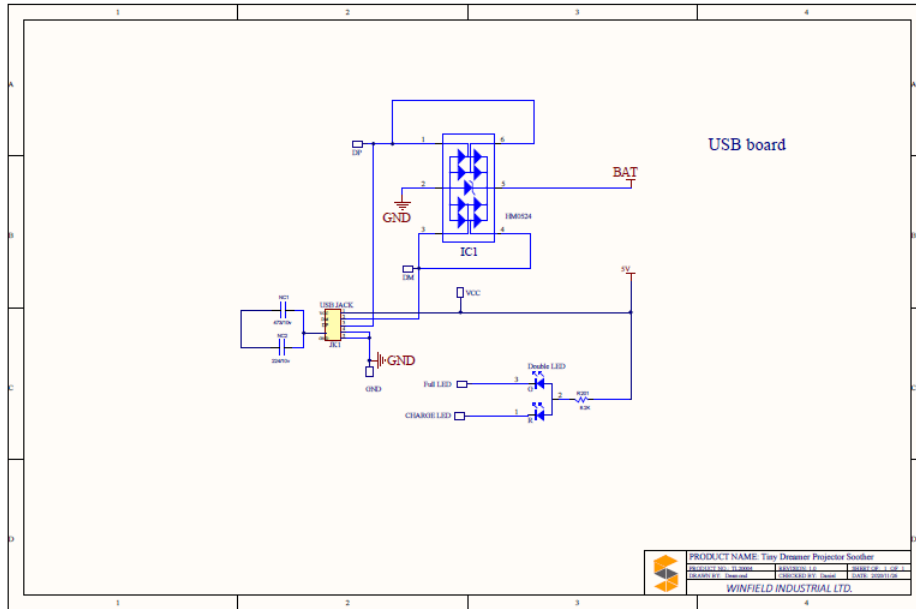
Member of the SGS Group (SGS SA)

TEST REPORT

Report No.: GZES210100048801

Date: 2021-01-29

Schematic circuit diagram for LED board:



PRODUCT NAME: Tiny Dimmer Projector Scooter	
PROJECT NO.: 210100048801	LABORATORY: GZES
TEST NO.: 210100048801	DATE: 2021-01-29
WINFIELD INDUSTRIAL LTD.	



Unless otherwise agreed in writing, this document is issued by the Company subject to its General Conditions of Service printed overleaf, available on request or accessible at <http://www.sgs.com/en/Terms-and-Conditions.aspx> and, for electronic format documents, subject to Terms and Conditions for Electronic Documents at <http://www.sgs.com/en/Terms-and-Conditions/Terms-e-Documents.aspx>. Attention is drawn to the limitation of liability, indemnification and jurisdiction issues defined therein. Any holder of this document is advised that information contained hereon reflects the Company's findings at the time of its intervention only and within the limits of Client's instructions, if any. The Company's sole responsibility is to its Client and this document does not exonerate parties to a transaction from exercising all their rights and obligations under the transaction documents. This document cannot be reproduced except in full, without prior written approval of the Company. Any unauthorized alteration, forgery or falsification of the content or appearance of this document is unlawful and offenders may be prosecuted to the fullest extent of the law. Unless otherwise stated the results shown in this test report refer only to the sample(s) tested and such sample(s) are retained for 30 days only.

Attention: To check the authenticity of testing / inspection report & certificate, please contact us at telephone: (86-755) 8307 1443, or email: CN.Doccheck@sgs.com
 No.198 Kezhu Road, Sciencetech Park, Guangzhou Economic & Technology Development District, Guangzhou, China 510663 t (86-20) 82155555 f (86-20) 82075058 www.sgs.com.cn
 Guangzhou Branch, Testing Services, EEC Laboratory. 中国·广州·经济技术开发区科学城科珠路198号 邮编: 510663 t (86-20) 82155555 f (86-20) 82075058 sgs.china@sgs.com

TEST REPORT

Report No.: GZES210100048801

Date: 2021-01-29

ANNEX 4: Photo documentation

Details of: General view

View:

- general
- front
- rear
- right
- left
- top
- bottom

Details of: General view

View:

- general
- front
- rear
- right
- left
- top
- bottom



Unless otherwise agreed in writing, this document is issued by the Company subject to its General Conditions of Service printed overleaf, available on request or accessible at <http://www.sgs.com/en/Terms-and-Conditions.aspx> and, for electronic format documents, subject to Terms and Conditions for Electronic Documents at <http://www.sgs.com/en/Terms-and-Conditions/Terms-e-Documents.aspx>. Attention is drawn to the limitation of liability, indemnification and jurisdiction issues defined therein. Any holder of this document is advised that information contained hereon reflects the Company's findings at the time of its intervention only and within the limits of Client's instructions, if any. The Company's sole responsibility is to its Client and this document does not exonerate parties to a transaction from exercising all their rights and obligations under the transaction documents. This document cannot be reproduced except in full, without prior written approval of the Company. Any unauthorized alteration, forgery or falsification of the content or appearance of this document is unlawful and offenders may be prosecuted to the fullest extent of the law. Unless otherwise stated the results shown in this test report refer only to the sample(s) tested and such sample(s) are retained for 30 days only.

Attention: To check the authenticity of testing /inspection report & certificate, please contact us at telephone: (86-755) 8307 1443, or email: CN.Doccheck@sgs.com
 SGS-CS Standards Technical Services Co., Ltd. No.198 Kezhu Road, Sciencetech Park, Guangzhou Economic & Technology Development District, Guangzhou, China 510663 t (86-20) 82155555 f (86-20) 82075058 www.sgsgroup.com.cn
 Guangzhou Branch Test Services Co., Ltd. EEC Laboratory. 中国·广州·经济技术开发区科学城科珠路198号 邮编: 510663 t (86-20) 82155555 f (86-20) 82075058 sgs.china@sgs.com

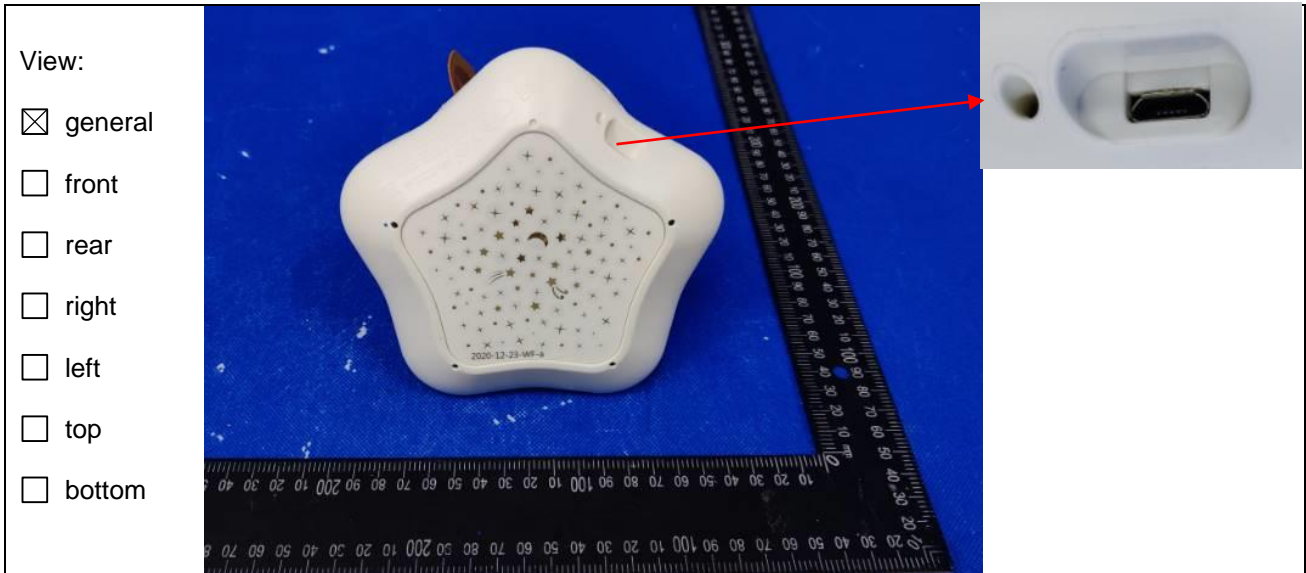
Member of the SGS Group (SGS SA)

TEST REPORT

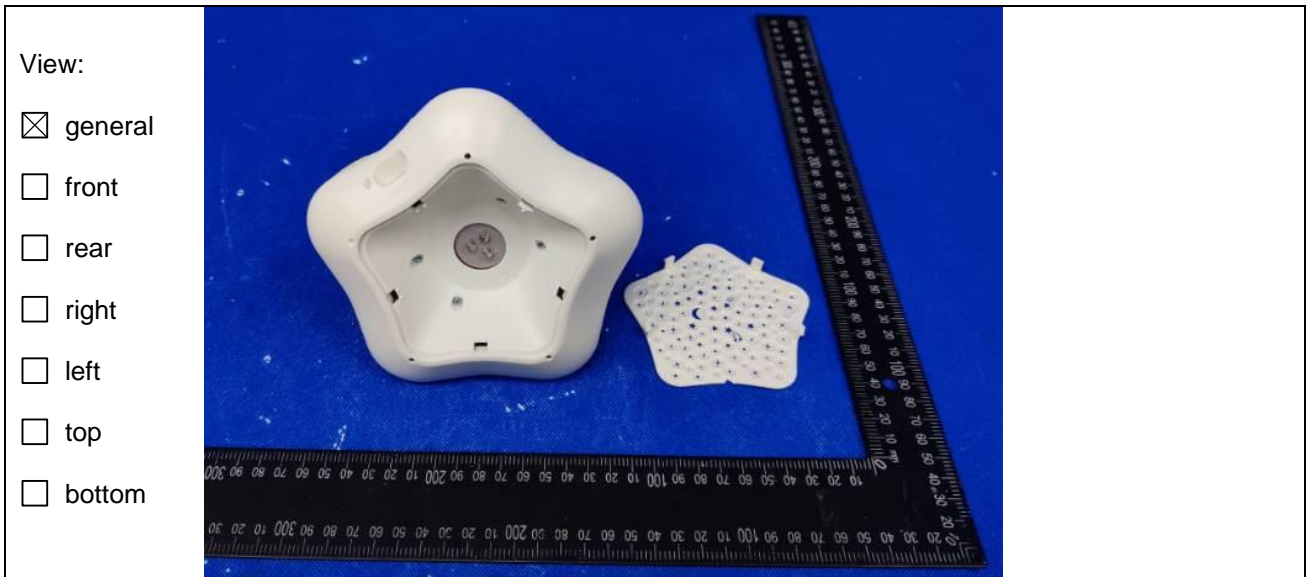
Report No.: GZES210100048801

Date: 2021-01-29

Details of: Internal view



Details of: Internal view



Unless otherwise agreed in writing, this document is issued by the Company subject to its General Conditions of Service printed overleaf, available on request or accessible at <http://www.sgs.com/en/Terms-and-Conditions.aspx> and, for electronic format documents, subject to Terms and Conditions for Electronic Documents at <http://www.sgs.com/en/Terms-and-Conditions/Terms-e-Documents.aspx>. Attention is drawn to the limitation of liability, indemnification and jurisdiction issues defined therein. Any holder of this document is advised that information contained hereon reflects the Company's findings at the time of its intervention only and within the limits of Client's instructions, if any. The Company's sole responsibility is to its Client and this document does not exonerate parties to a transaction from exercising all their rights and obligations under the transaction documents. This document cannot be reproduced except in full, without prior written approval of the Company. Any unauthorized alteration, forgery or falsification of the content or appearance of this document is unlawful and offenders may be prosecuted to the fullest extent of the law. Unless otherwise stated the results shown in this test report refer only to the sample(s) tested and such sample(s) are retained for 30 days only.

Attention: To check the authenticity of testing / inspection report & certificate, please contact us at telephone: (86-755) 8307 1443, or email: CN.Doccheck@sgs.com

SGS-CSI Standards Technical Services Co., Ltd. No.198 Kezhu Road, Sciencetech Park, Guangzhou Economic & Technology Development District, Guangzhou, China 510663 t (86-20) 82155555 f (86-20) 82075058 www.sgs.com.cn
 Guangzhou Branch Testing Services Co., Ltd. EEC Laboratory. 中国·广州·经济技术开发区科学城科珠路198号 邮编: 510663 t (86-20) 82155555 f (86-20) 82075058 sgs.china@sgs.com

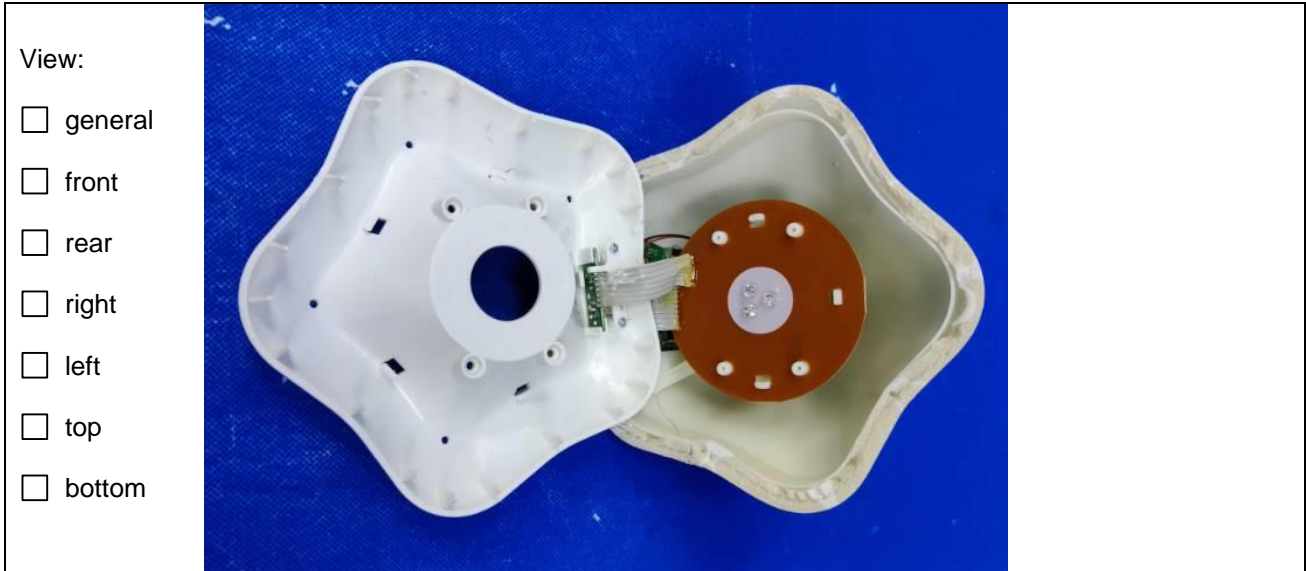
Member of the SGS Group (SGS SA)

TEST REPORT

Report No.: GZES210100048801

Date: 2021-01-29

Details of: Internal view



Details of: Internal view



Unless otherwise agreed in writing, this document is issued by the Company subject to its General Conditions of Service printed overleaf, available on request or accessible at <http://www.sgs.com/en/Terms-and-Conditions.aspx> and, for electronic format documents, subject to Terms and Conditions for Electronic Documents at <http://www.sgs.com/en/Terms-and-Conditions/Terms-e-Documents.aspx>. Attention is drawn to the limitation of liability, indemnification and jurisdiction issues defined therein. Any holder of this document is advised that information contained hereon reflects the Company's findings at the time of its intervention only and within the limits of Client's instructions, if any. The Company's sole responsibility is to its Client and this document does not exonerate parties to a transaction from exercising all their rights and obligations under the transaction documents. This document cannot be reproduced except in full, without prior written approval of the Company. Any unauthorized alteration, forgery or falsification of the content or appearance of this document is unlawful and offenders may be prosecuted to the fullest extent of the law. Unless otherwise stated the results shown in this test report refer only to the sample(s) tested and such sample(s) are retained for 30 days only.

Attention: To check the authenticity of testing / inspection report & certificate, please contact us at telephone: (86-755) 8307 1443, or email: CN.Doccheck@sgs.com

SGS-CTI Standards Technical Services Co., Ltd. No.198 Kezhu Road, Sciencetech Park, Guangzhou Economic & Technology Development District, Guangzhou, China 510663 t (86-20) 82155555 f (86-20) 82075058 www.sgs.com.cn
 Guangzhou Branch Test Services Co., Ltd. EEC Laboratory. 中国·广州·经济技术开发区科学城科珠路198号 邮编: 510663 t (86-20) 82155555 f (86-20) 82075058 sgs.china@sgs.com

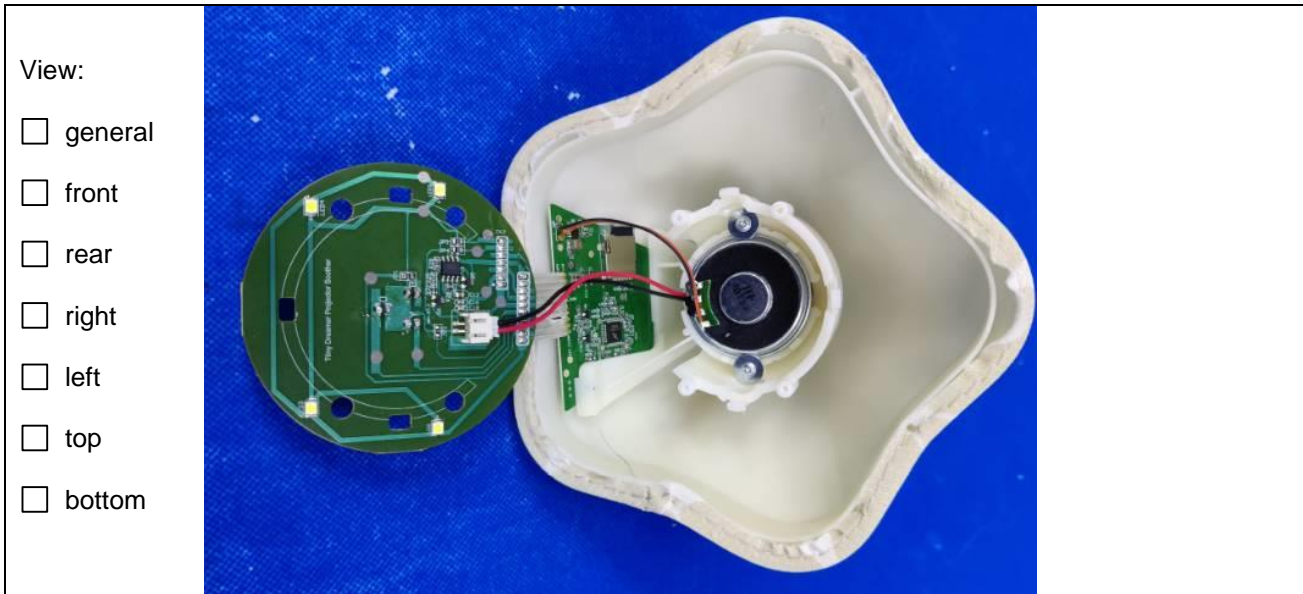
Member of the SGS Group (SGS SA)

TEST REPORT

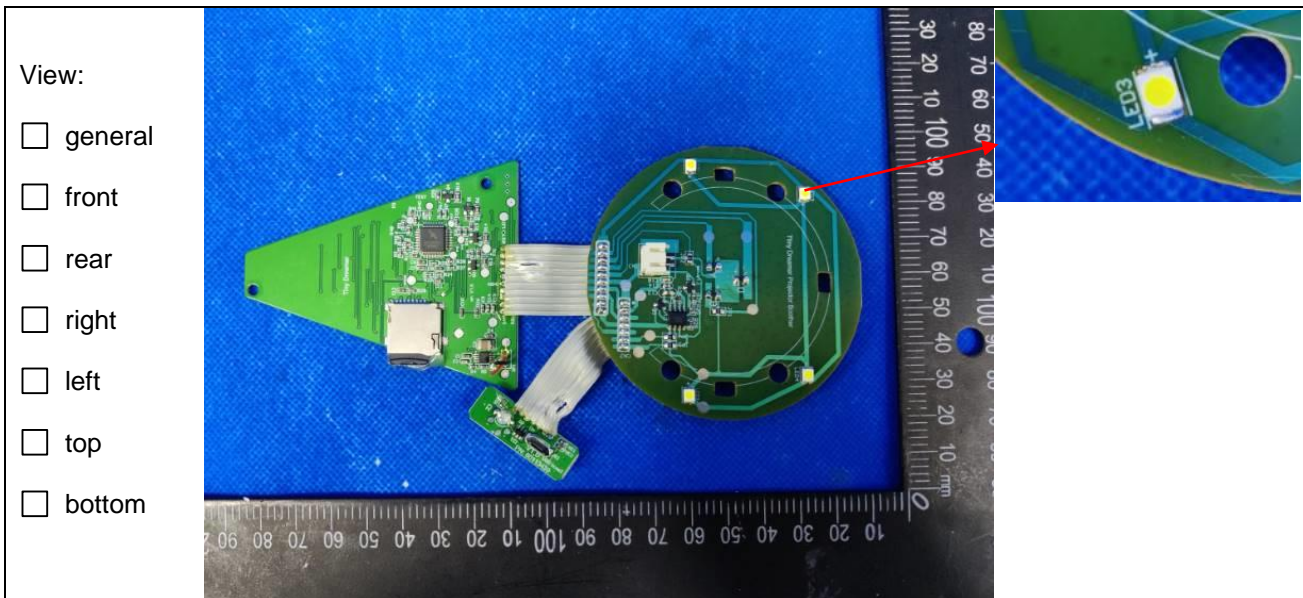
Report No.: GZES210100048801

Date: 2021-01-29

Details of: Internal view



Details of: Top PCB view



Unless otherwise agreed in writing, this document is issued by the Company subject to its General Conditions of Service printed overleaf, available on request or accessible at <http://www.sgs.com/en/Terms-and-Conditions.aspx> and, for electronic format documents, subject to Terms and Conditions for Electronic Documents at <http://www.sgs.com/en/Terms-and-Conditions/Terms-e-Document.aspx>. Attention is drawn to the limitation of liability, indemnification and jurisdiction issues defined therein. Any holder of this document is advised that information contained hereon reflects the Company's findings at the time of its intervention only and within the limits of Client's instructions, if any. The Company's sole responsibility is to its Client and this document does not exonerate parties to a transaction from exercising all their rights and obligations under the transaction documents. This document cannot be reproduced except in full, without prior written approval of the Company. Any unauthorized alteration, forgery or falsification of the content or appearance of this document is unlawful and offenders may be prosecuted to the fullest extent of the law. Unless otherwise stated the results shown in this test report refer only to the sample(s) tested and such sample(s) are retained for 30 days only.

Attention: To check the authenticity of testing / inspection report & certificate, please contact us at telephone: (86-755) 8307 1443, or email: CN.Doccheck@sgs.com

SGS-CTI Standards Technical Services Co., Ltd. No.198 Kezhu Road, Sciencetech Park, Guangzhou Economic & Technology Development District, Guangzhou, China 510663 t (86-20) 82155555 f (86-20) 82075058 www.sgs.com.cn
 Guangzhou Branch of SGS-CTI Technical Services Co., Ltd. EEC Laboratory. 中国·广州·经济技术开发区科学城科珠路198号 邮编: 510663 t (86-20) 82155555 f (86-20) 82075058 sgs.china@sgs.com

Member of the SGS Group (SGS SA)

TEST REPORT

Report No.: GZES210100048801

Date: 2021-01-29

Details of: Rear PCB view

View:

general

front

rear

right

left

top

bottom

Details of: Battery view

View:

general

front

rear

right

left

top

bottom

--- End of Report ---



Unless otherwise agreed in writing, this document is issued by the Company subject to its General Conditions of Service printed overleaf, available on request or accessible at <http://www.sgs.com/en/Terms-and-Conditions.aspx> and, for electronic format documents, subject to Terms and Conditions for Electronic Documents at <http://www.sgs.com/en/Terms-and-Conditions/Terms-e-Documents.aspx>. Attention is drawn to the limitation of liability, indemnification and jurisdiction issues defined therein. Any holder of this document is advised that information contained hereon reflects the Company's findings at the time of its intervention only and within the limits of Client's instructions, if any. The Company's sole responsibility is to its Client and this document does not exonerate parties to a transaction from exercising all their rights and obligations under the transaction documents. This document cannot be reproduced except in full, without prior written approval of the Company. Any unauthorized alteration, forgery or falsification of the content or appearance of this document is unlawful and offenders may be prosecuted to the fullest extent of the law. Unless otherwise stated the results shown in this test report refer only to the sample(s) tested and such sample(s) are retained for 30 days only.

SGS-CS Standards Technical Services Co., Ltd.
Guangzhou Branch, IEC Laboratory.

Attention: To check the authenticity of testing / inspection report & certificate, please contact us at telephone: (86-755) 8307 1443, or email: CN.Doccheck@sgs.com
No.198 Kezhu Road, Sciencetech Park, Guangzhou Economic & Technology Development District, Guangzhou, China 510663 t (86-20) 82155555 f (86-20) 82075058 www.sgsgroup.com.cn
中国·广州·经济技术开发区科学城科珠路198号 邮编: 510663 t (86-20) 82155555 f (86-20) 82075058 sgs.china@sgs.com

Member of the SGS Group (SGS SA)