



Test Report

No.: T52310270424TY

Date: APR 24, 2023

Page 1 of 38

Tiny Love Test Report

Applicant:	TINY LOVE LTD
Address:	KORENDIJK 5, NL-5704 RD, HELMOND
Contact Person:	SMADAR CAHLON, YARDEN LABEL, BRIAN CHENG

Sample Description:	WONDER BUDDIES THOMAS		
Style/Item No.:	130610E001	PO No.:	/
Country of Destination:	/	Country of Origin:	CHINA
Vendor:	/		
Manufacturer:	WINFIELD		
Date Code:	/		
Client Reference Information:	/		
Intended Age Grade on Label:	12M+		

Age Group Applied in Testing:	OVER 12 MONTHS		
Date In:	APR 10, 2023		
Date Out:	APR 24, 2023		
Working Days:	7+		
Further Information Date:	/	Sample Resubmission Date:	/



Unless otherwise agreed in writing, this document is issued by the Company subject to its General Conditions of Service printed overleaf, available on request or accessible at <http://www.sgs.com/en/Terms-and-Conditions.aspx> and, for electronic format documents, subject to Terms and Conditions for Electronic Documents at <http://www.sgs.com/en/Terms-and-Conditions/Terms-e-Document.aspx>. Attention is drawn to the limitation of liability, indemnification and jurisdiction issues defined therein. Any holder of this document is advised that information contained hereon reflects the Company's findings at the time of its intervention only and within the limits of Client's instructions, if any. The Company's sole responsibility is to its Client and this document does not exonerate parties to a transaction from exercising all their rights and obligations under the transaction documents. This document cannot be reproduced except in full, without prior written approval of the Company. Any unauthorized alteration, forgery or falsification of the content or appearance of this document is unlawful and offenders may be prosecuted to the fullest extent of the law. Unless otherwise stated the results shown in this test report refer only to the sample(s) tested and such sample(s) are retained for 30 days only.

Attention: To check the authenticity of testing / inspection report & certificate, please contact us at telephone:(86-755) 8307 1443, or email: CN.Doccheck@sgs.com

SGS-CSTC (Shenzhen) Technical Services Co., Ltd.
Shenzhen Branch Testing Center Hardlines

Room 101-501, Plant 4 & Room 101, Plant 2 & Room 101, Plant 3 & Room 301-501, Plant 3, Jianghao (Banian) Industrial Plant Area, No.430, Jihua Road, Banian Community, Banian Street, Longgang District, Shenzhen, Guangdong, China 518129 www.sgs.com.cn
中国·广东·深圳市龙岗区坂田街道坂田社区吉华路430号江灏(坂田)工业区厂房4号 101-901、2号101、3号301-501 邮编: 518129 t:(86-755) 25328888 sgs.china@sgs.com

Member of the SGS Group (SGS SA)

Test Requested		Conclusion
1.	For compliance with the European standard on Safety of toys:-	--
	EN 71-1:2014+A1:2018 – Safety of toys – Part 1: Mechanical and Physical Properties	PASS
	EN 71-2: 2020 – Safety of toys – Part 2: Flammability	PASS
	Labeling requirement (Washing/Cleaning Label, CE mark, importer / manufacturer mark (name, address), product identification) according to Informative Annex A.26 and A.33 of the European standard on Safety of toys EN 71-1:2014+A1:2018 and the Directive 2009/48/EC-Safety of toys	SEE RESULT
	Directive 2009/48/EC and its amendment Council Directive (EU) 2017/738, Commission Directive (EU) 2018/725, Commission Directive (EU) 2019/1922 – EN 71-3:2019 + A1:2021 – Migration of certain elements	PASS
2.	European Regulation (EC) No. 1907/2006 (REACH) Annex XVII and its amendments – Cadmium content	PASS
3.	European Regulation (EC) No. 1907/2006 (REACH) Annex XVII and its amendment (EU) 2018/2005 – Phthalates content	PASS
4.	European Regulation (EC) No. 1907/2006 (REACH) Annex XVII and its amendments including (EU) 2020/2096 – AZO Colourants	PASS
5.	European commission directive (EU) 2019/1929 – Formaldehyde	PASS
	Client’s Requirement –Formaldehyde	PASS
6.	Client’s Requirement – Extractable Heavy Metal	PASS
7.	France Act 2012-1442 of 24 Dec 2012 - Bisphenol A (BPA) content	NOT APPLICABLE
8.	Client’s Requirement – Polycyclic Aromatic Hydrocarbons (PAHs) Content	PASS



Test Requested		Conclusion
9.	Client's Requirement – Lead Content	PASS
10.	Client's Requirement – Cadmium Content	PASS
11.	Client's Requirement – Phthalates Content	PASS
12.	Client's Requirement – Alkylphenol Ethoxylates (APEOs) – Nonylphenol Ethoxylates (NPEOs) and Octylphenol Ethoxylates (OPEOs) content	PASS
13.	Client's Requirement – Alkylphenol (AP)– Nonylphenol (NP) and Octylphenol (OP) content	PASS
14.	Client's Requirement – O-phenylphenol (OPP) content	PASS
15.	EN71-12:2016-N-nitrosamines and N-nitrosatable substances	PASS
16.	Colour Fastness to Rubbing (EN ISO 105-X12:2016)	SEE RESULT

***** FOR FURTHER DETAILS, PLEASE REFER TO THE FOLLOWING PAGE(S) *****



SGS-CSTC Technical Services Co., Ltd.
Shenzhen Branch Testing Center Hardlines

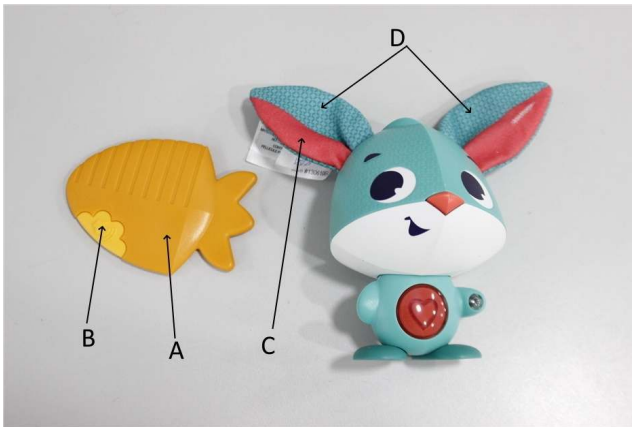
Unless otherwise agreed in writing, this document is issued by the Company subject to its General Conditions of Service printed overleaf, available on request or accessible at <http://www.sgs.com/en/Terms-and-Conditions.aspx> and, for electronic format documents, subject to Terms and Conditions for Electronic Documents at <http://www.sgs.com/en/Terms-and-Conditions/Terms-e-Documents.aspx>. Attention is drawn to the limitation of liability, indemnification and jurisdiction issues defined therein. Any holder of this document is advised that information contained hereon reflects the Company's findings at the time of its intervention only and within the limits of Client's instructions, if any. The Company's sole responsibility is to its Client and this document does not exonerate parties to a transaction from exercising all their rights and obligations under the transaction documents. This document cannot be reproduced except in full, without prior written approval of the Company. Any unauthorized alteration, forgery or falsification of the content or appearance of this document is unlawful and offenders may be prosecuted to the fullest extent of the law. Unless otherwise stated the results shown in this test report refer only to the sample(s) tested and such sample(s) are retained for 30 days only.

Attention: To check the authenticity of testing / inspection report & certificate, please contact us at telephone:(86-755) 8307 1443, or email: CN.Doccheck@sgs.com

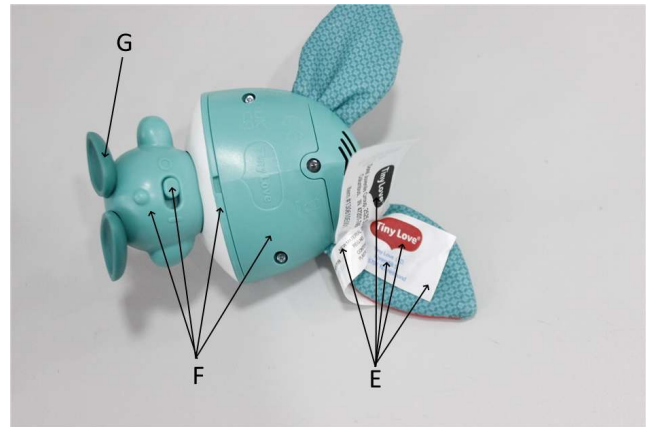
Room 101-501, Plant 4 & Room 101, Plant 2 & Room 101, Plant 3 & Room 301-501, Plant 3, Jianghao (Banian) Industrial Plant Area, No.430, Jihua Road, Banian Community, Banian Street, Longgang District, Shenzhen, Guangdong, China 518129 www.sgs.com.cn
中国·广东·深圳市龙岗区坂田街道坂田社区吉华路430号江灏(坂田)工业厂区厂房4号 101-901、2号101、3号301-501 邮编: 518129 t:(86-755) 25328888 sgs.china@sgs.com

Picture Page

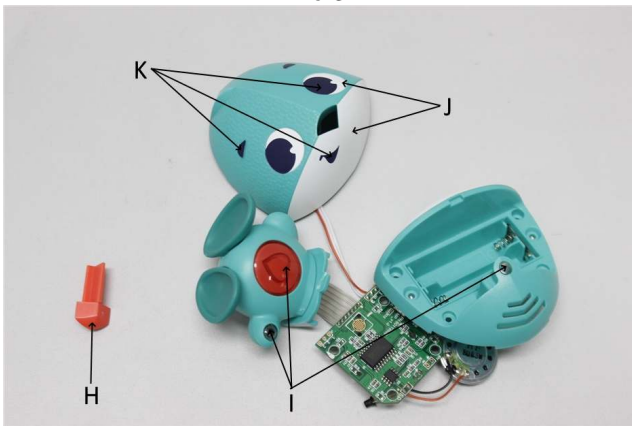
Pic.1



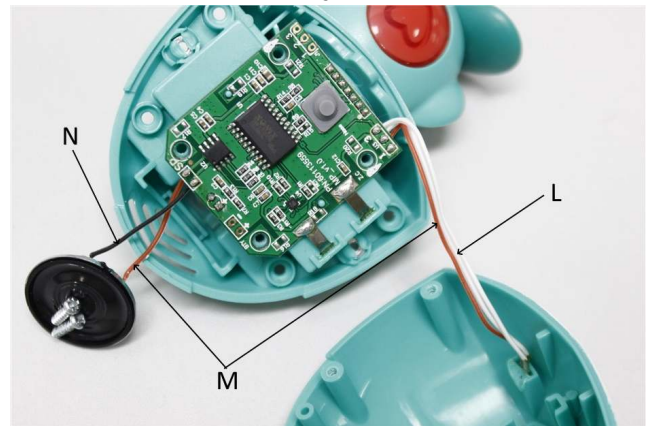
Pic.2



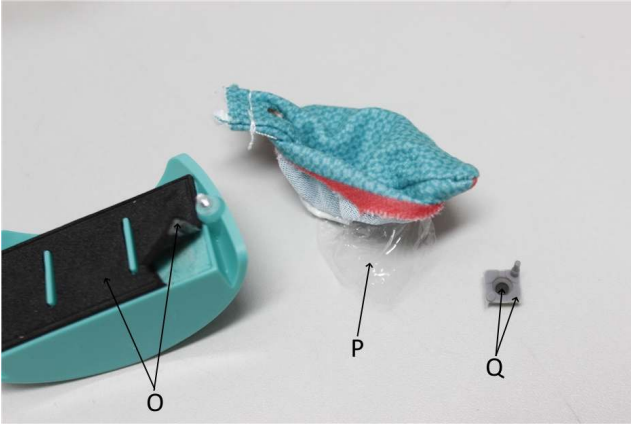
Pic.3



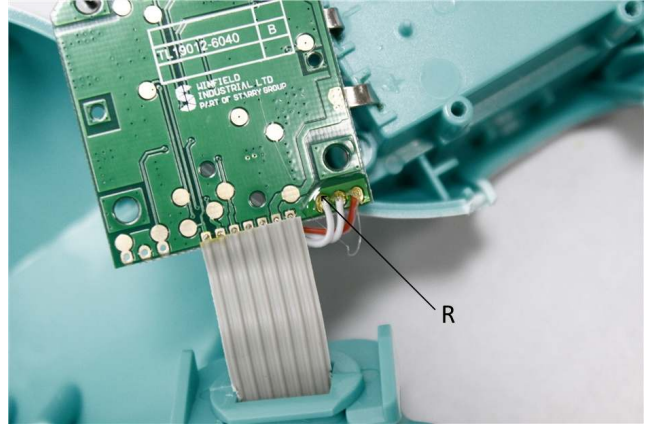
Pic.4



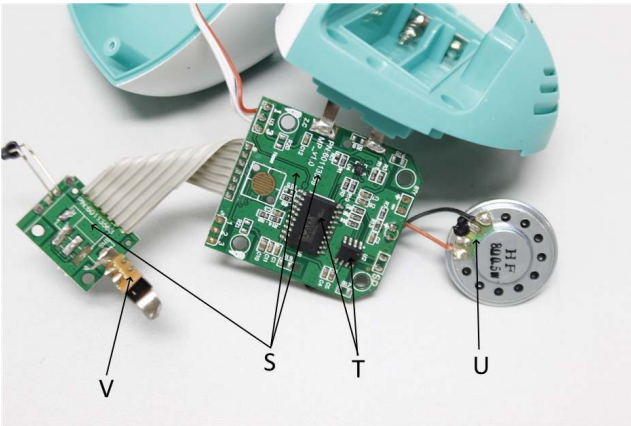
Pic.5



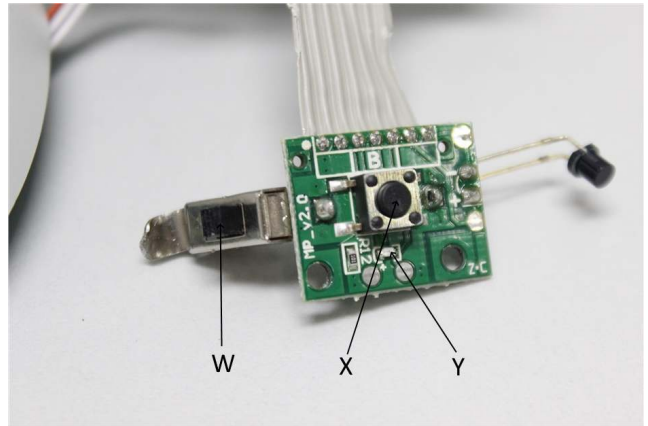
Pic.6



Pic.7



Pic.8

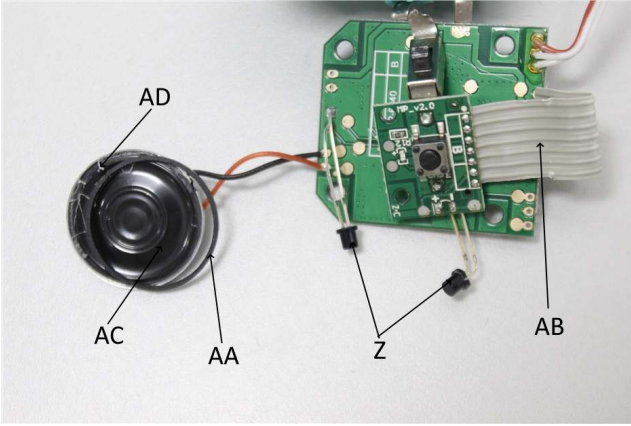


Unless otherwise agreed in writing, this document is issued by the Company subject to its General Conditions of Service printed overleaf, available on request or accessible at <http://www.sgs.com/en/Terms-and-Conditions.aspx> and, for electronic format documents, subject to Terms and Conditions for Electronic Documents at <http://www.sgs.com/en/Terms-and-Conditions/Terms-e-Document.aspx>. Attention is drawn to the limitation of liability, indemnification and jurisdiction issues defined therein. Any holder of this document is advised that information contained hereon reflects the Company's findings at the time of its intervention only and within the limits of Client's instructions, if any. The Company's sole responsibility is to its Client and this document does not exonerate parties to a transaction from exercising all their rights and obligations under the transaction documents. This document cannot be reproduced except in full, without prior written approval of the Company. Any unauthorized alteration, forgery or falsification of the content or appearance of this document is unlawful and offenders may be prosecuted to the fullest extent of the law. Unless otherwise stated the results shown in this test report refer only to the sample(s) tested and such sample(s) are retained for 30 days only.

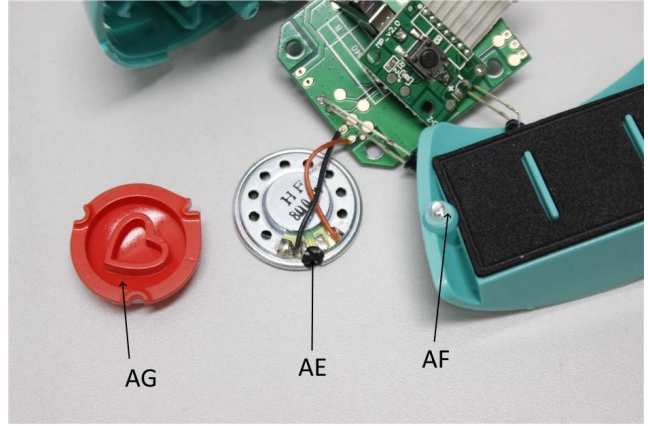
Attention: To check the authenticity of testing / inspection report & certificate, please contact us at telephone:(86-755) 8307 1443, or email: CN.Doccheck@sgs.com



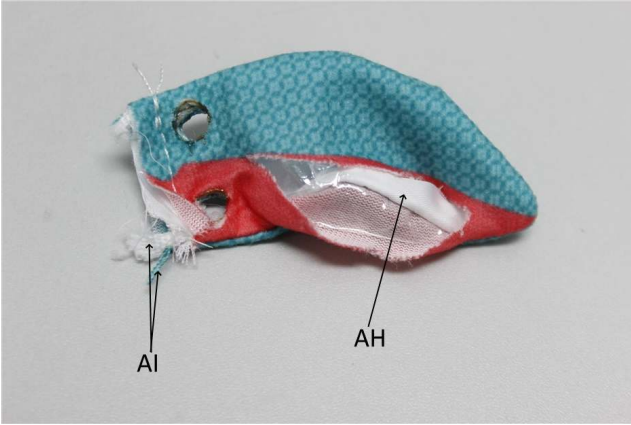
Pic.9



Pic.10



Pic.11



Pic.12



Signed for and on behalf of
 SGS-CSTC Standards Technical
 Services Co., Ltd. Shenzhen Branch Testing Center

Sun Enxu, Aaron
 Dept. Manager

scan to see the report



T52310270424TY



SGS-CSTC Standards Technical Services Co., Ltd.
 Shenzhen Branch Testing Center Hardlines

Unless otherwise agreed in writing, this document is issued by the Company subject to its General Conditions of Service printed overleaf, available on request or accessible at <http://www.sgs.com/en/Terms-and-Conditions.aspx> and, for electronic format documents, subject to Terms and Conditions for Electronic Documents at <http://www.sgs.com/en/Terms-and-Conditions/Terms-e-Document.aspx>. Attention is drawn to the limitation of liability, indemnification and jurisdiction issues defined therein. Any holder of this document is advised that information contained hereon reflects the Company's findings at the time of its intervention only and within the limits of Client's instructions, if any. The Company's sole responsibility is to its Client and this document does not exonerate parties to a transaction from exercising all their rights and obligations under the transaction documents. This document cannot be reproduced except in full, without prior written approval of the Company. Any unauthorized alteration, forgery or falsification of the content or appearance of this document is unlawful and offenders may be prosecuted to the fullest extent of the law. Unless otherwise stated the results shown in this test report refer only to the sample(s) tested and such sample(s) are retained for 30 days only.

Attention: To check the authenticity of testing / inspection report & certificate, please contact us at telephone:(86-755) 8307 1443, or email: CN.Doccheck@sgs.com

Room 101-501, Plant 4 & Room 101, Plant 2 & Room 101, Plant 3 & Room 301-501, Plant 3, Jianghao (Bantian) Industrial Plant Area, No.430, Jihua Road, Bantian Community, Bantian Street, Longgang District, Shenzhen, Guangdong, China 518129 www.sgs.com.cn
 中国·广东·深圳市龙岗区坂田街道坂田社区吉华路430号江灏(坂田)工业厂区厂房4号101-901、2号101、3号101、3号301-501 邮编: 518129 t:(86-755) 25328888 sgs.china@sgs.com

Results:

EUROPEAN STANDARD ON SAFETY OF TOYS

EN 71-1:2014 + A1:2018 – SAFETY OF TOYS – PART 1: MECHANICAL AND PHYSICAL PROPERTIES

AS SPECIFIED IN EN 71-1:2014 + A1:2018 – SAFETY OF TOYS – PART 1: MECHANICAL AND PHYSICAL PROPERTIES

Clauses relevant to the item:

<u>Clause</u>	<u>Description</u>	<u>Result</u>
4	General Requirements	
4.1	Materials cleanliness	PASS
4.7	Edges	PASS
4.8	Points and Metallic Wires	PASS
4.20	Acoustics	PASS (See Table)

Table : Tiny Love

Hand Held Toys

Max Result	Limit
L _{pAeq} : 71.4dB	90dB
L _{pCpeak} : 92.1dB	110dB

Table-Top or Floor Toy

Max Result	Limit
L _{pAeq} : 72.8dB	85dB
L _{pCpeak} : 88.9dB	110dB

4.23	Magnets	PASS
5	Toys intended for Children under 36 months	
5.1	General Requirements	
5.1a	Small part requirement on toys & removable Components (Test method 8.2)	PASS
5.1b	Torque test (Test method 8.3)	PASS
5.1b	Tension test (Test method 8.4)	PASS
5.1b	Drop test (Test method 8.5)	PASS
5.1b	Impact test (Test method 8.7)	PASS
5.1b	Sharp edge (Test method 8.11)	PASS
5.1b	Sharp point (Test method 8.12)	PASS



Unless otherwise agreed in writing, this document is issued by the Company subject to its General Conditions of Service printed overleaf, available on request or accessible at <http://www.sgs.com/en/Terms-and-Conditions.aspx> and, for electronic format documents, subject to Terms and Conditions for Electronic Documents at <http://www.sgs.com/en/Terms-and-Conditions/Terms-e-Document.aspx>. Attention is drawn to the limitation of liability, indemnification and jurisdiction issues defined therein. Any holder of this document is advised that information contained hereon reflects the Company's findings at the time of its intervention only and within the limits of Client's instructions, if any. The Company's sole responsibility is to its Client and this document does not exonerate parties to a transaction from exercising all their rights and obligations under the transaction documents. This document cannot be reproduced except in full, without prior written approval of the Company. Any unauthorized alteration, forgery or falsification of the content or appearance of this document is unlawful and offenders may be prosecuted to the fullest extent of the law. Unless otherwise stated the results shown in this test report refer only to the sample(s) tested and such sample(s) are retained for 30 days only.

Attention: To check the authenticity of testing / inspection report & certificate, please contact us at telephone:(86-755) 8307 1443, or email: CN.Doccheck@sgs.com

Test Report

No.: T52310270424TY

Date: APR 24, 2023

Page 8 of 38

<u>Clause</u>	<u>Description</u>	<u>Result</u>
7	Warnings, markings and instructions for use	
7.1	General Note: Please note that for assessing the visibility and legibility of warnings, CEN has introduced good practice in the informative Annex A.33 by addressing the following aspects: a) Emphasising the warning b) Contrast, background and colours c) Reflecting surfaces and obscuring material d) Font type e) Font size f) Logical direction of text For more details, see EN 71-1.	PASS

Warning, precautions and instructions for use should be written in the national language(s) where the toy would be sold at least.

EN 71-2: 2020 – SAFETY OF TOYS – PART 2: FLAMMABILITY

AS SPECIFIED IN EN 71-2: 2020 – SAFETY OF TOYS – PART 2: FLAMMABILITY

Type of gas: Butane gas used in the test burner

Clauses relevant to the item:

<u>Clause</u>	<u>Description</u>	<u>Result</u>
4.1	General requirements	PASS



SGS-CSTC Technical Services Co., Ltd.
Shenzhen Branch Testing Center Hardlines

Unless otherwise agreed in writing, this document is issued by the Company subject to its General Conditions of Service printed overleaf, available on request or accessible at <http://www.sgs.com/en/Terms-and-Conditions.aspx> and, for electronic format documents, subject to Terms and Conditions for Electronic Documents at <http://www.sgs.com/en/Terms-and-Conditions/Terms-e-Document.aspx>. Attention is drawn to the limitation of liability, indemnification and jurisdiction issues defined therein. Any holder of this document is advised that information contained hereon reflects the Company's findings at the time of its intervention only and within the limits of Client's instructions, if any. The Company's sole responsibility is to its Client and this document does not exonerate parties to a transaction from exercising all their rights and obligations under the transaction documents. This document cannot be reproduced except in full, without prior written approval of the Company. Any unauthorized alteration, forgery or falsification of the content or appearance of this document is unlawful and offenders may be prosecuted to the fullest extent of the law. Unless otherwise stated the results shown in this test report refer only to the sample(s) tested and such sample(s) are retained for 30 days only.

Attention: To check the authenticity of testing / inspection report & certificate, please contact us at telephone:(86-755) 8307 1443, or email: CN.Doccheck@sgs.com

Room 101-501, Plant 4 & Room 101, Plant 2 & Room 101, Plant 3 & Room 301-501, Plant 3, Jianghao (Banian) Industrial Plant Area, No.430, Jihua Road, Banian Community, Banian Street, Longgang District, Shenzhen, Guangdong, China 518129 www.sgs.com.cn
中国·广东·深圳市龙岗区坂田街道坂田社区吉华路430号江灏(坂田)工业厂区厂房4号 101-901、2号101、3号301-501 邮编: 518129 t:(86-755) 25328888 sgs.china@sgs.com

LABELING REQUIREMENT (WASHING/CLEANING LABEL, CE MARK, IMPORTER / MANUFACTURER MARK (NAME, ADDRESS), PRODUCT IDENTIFICATION) ACCORDING TO INFORMATIVE ANNEX A.26 AND A.33 OF THE EUROPEAN STANDARD ON SAFETY OF TOYS EN 71-1:2014+A1:2018 AND THE DIRECTIVE 2009/48/EC-SAFETY OF TOYS

Summary table:

	Observation Result	Location
Washing/Cleaning instruction	Present	Toy & Packaging
CE mark	Present	Toy & Packaging
Importer's Name & Address	Present	Toy & Packaging
Manufacturer's Name & Address	Present	Toy & Packaging
Product ID	Present	Toy & Packaging

Note:

1. According to Directive 2009/48/EC, a toy intended for use by children under 36 months must be designed and manufactured in such a way that it can be cleaned. A textile toy must, to this end, be washable, except if it contains a mechanism that may be damaged if soak washed. The manufacturer should, if applicable, provide instructions on how the toy has to be cleaned. According to the GUIDANCE DOCUMENT ON THE APPLICATION OF DIRECTIVE 2009/48/EC ON THE SAFETY OF TOYS, manufacturer shall not label "surface washing" on textile toys which, under the TSD, need to be soak washable."
2. CE marking should be visible from outside the packaging and its height must be at least 5mm.
3. Manufacturer's and Importer's name, registered trade name or registered trade mark and the address at which the manufacturer can be contacted must be indicated on the toy or, where that is not possible, on its packaging or in a document accompanying the toy.
4. Manufacturers must ensure that their toys bear a type, batch, serial or model number or other element allowing their identification, or where the size or nature of the toy does not allow it, that the required information is provided on the packaging or in a document accompanying the toy.



Unless otherwise agreed in writing, this document is issued by the Company subject to its General Conditions of Service printed overleaf, available on request or accessible at <http://www.sgs.com/en/Terms-and-Conditions.aspx> and, for electronic format documents, subject to Terms and Conditions for Electronic Documents at <http://www.sgs.com/en/Terms-and-Conditions/Terms-e-Documents.aspx>. Attention is drawn to the limitation of liability, indemnification and jurisdiction issues defined therein. Any holder of this document is advised that information contained hereon reflects the Company's findings at the time of its intervention only and within the limits of Client's instructions, if any. The Company's sole responsibility is to its Client and this document does not exonerate parties to a transaction from exercising all their rights and obligations under the transaction documents. This document cannot be reproduced except in full, without prior written approval of the Company. Any unauthorized alteration, forgery or falsification of the content or appearance of this document is unlawful and offenders may be prosecuted to the fullest extent of the law. Unless otherwise stated the results shown in this test report refer only to the sample(s) tested and such sample(s) are retained for 30 days only.

Attention: To check the authenticity of testing / inspection report & certificate, please contact us at telephone:(86-755) 8307 1443, or email: CN.Doccheck@sgs.com

Room 101-501, Plant 4 & Room 101, Plant 2 & Room 101, Plant 3 & Room 301-501, Plant 3, Jianghao (Bantian) Industrial Plant Area, No.430, Jihua Road, Bantian Community, Bantian Street, Longgang District, Shenzhen, Guangdong, China 518129 www.sgs.com
 中国·广东·深圳市龙岗区坂田街道坂田社区吉华路430号江灏(坂田)工业厂区厂房4号 101-901、2号101、3号301-501 邮编: 518129 t:(86-755) 25328888 sgs.china@sgs.com

Directive 2009/48/EC and its amendment Council Directive (EU) 2017/738, Commission Directive (EU) 2018/725, Commission Directive (EU) 2019/1922 – EN 71-3:2019+A1:2021 – Migration of certain elements

Category III: Scraped-off toy material

Method: With reference to EN 71-3:2019+A1:2021. Analysis of general elements was performed by ICP-OES / Chromium (III) was obtained by calculation, chromium (VI) was analyzed by IC-UV-Vis or LC-ICP-MS / organic tin was analyzed by GC-MS.

Test Item(s)	Result(s)			MDL	Permissible Limit
	1	2	3		
Specimen No.				--	--
Mass of trace amount (mg)	/	/	/	--	--
Soluble Aluminium (Al) (mg/kg)	ND	ND	ND	50	28130
Soluble Antimony (Sb) (mg/kg)	ND	ND	ND	10	560
Soluble Arsenic (As) (mg/kg)	ND	ND	ND	10	47
Soluble Barium (Ba) (mg/kg)	ND	ND	ND	50	18750
Soluble Boron (B) (mg/kg)	ND	ND	ND	50	15000
Soluble Cadmium (Cd) (mg/kg)	ND	ND	ND	5	17
Soluble Chromium ⁺ (Cr) (mg/kg)	ND	ND	ND	1	--
Soluble Chromium (III) (Cr (III)) (mg/kg)	ND	ND	ND	1	460
Soluble Chromium (VI) (Cr (VI)) (mg/kg)	ND	ND	ND	0.010	0.053
Soluble Cobalt (Co) (mg/kg)	ND	ND	ND	10	130
Soluble Copper (Cu) (mg/kg)	ND	ND	ND	50	7700
Soluble Lead (Pb) (mg/kg)	ND	ND	ND	2.3	23
Soluble Manganese (Mn) (mg/kg)	ND	ND	ND	50	15000
Soluble Mercury (Hg) (mg/kg)	ND	ND	ND	10	94
Soluble Nickel (Ni) (mg/kg)	ND	ND	ND	10	930
Soluble Selenium (Se) (mg/kg)	ND	ND	ND	10	460
Soluble Strontium (Sr) (mg/kg)	ND	ND	ND	50	56000
Soluble Tin (Sn) (mg/kg)	ND	ND	ND	3.0	180000
Soluble Organic Tin	ND	ND	ND	--	12
Soluble Zinc (Zn) (mg/kg)	ND	ND	ND	50	46000



SGS-CSTC Technical Services Co., Ltd.
Shenzhen Branch Testing Center Hardlines

Unless otherwise agreed in writing, this document is issued by the Company subject to its General Conditions of Service printed overleaf, available on request or accessible at <http://www.sgs.com/en/Terms-and-Conditions.aspx> and, for electronic format documents, subject to Terms and Conditions for Electronic Documents at <http://www.sgs.com/en/Terms-and-Conditions/Terms-e-Documents.aspx>. Attention is drawn to the limitation of liability, indemnification and jurisdiction issues defined therein. Any holder of this document is advised that information contained hereon reflects the Company's findings at the time of its intervention only and within the limits of Client's instructions, if any. The Company's sole responsibility is to its Client and this document does not exonerate parties to a transaction from exercising all their rights and obligations under the transaction documents. This document cannot be reproduced except in full, without prior written approval of the Company. Any unauthorized alteration, forgery or falsification of the content or appearance of this document is unlawful and offenders may be prosecuted to the fullest extent of the law. Unless otherwise stated the results shown in this test report refer only to the sample(s) tested and such sample(s) are retained for 30 days only.

Attention: To check the authenticity of testing / inspection report & certificate, please contact us at telephone: (86-755) 8307 1443, or email: CN.Doccheck@sgs.com

Room 101-901, Plant 4 & Room 101, Plant 2 & Room 101, Plant 3 & Room 301-501, Plant 3, Jianghao (Banian) Industrial Plant Area, No.430, Jihua Road, Banian Community, Banian Street, Longgang District, Shenzhen, Guangdong, China 518129 www.sgs.com.cn
中国·广东·深圳市龙岗区坂田街道坂田社区吉华路430号江灏(坂田)工业区厂房4号 101-901、2号101、3号301-501 邮编: 518129 t:(86-755) 25328888 sgs.china@sgs.com

Test Item(s)	Result(s)			MDL	Permissible Limit
	4	5	6		
Specimen No.				--	--
Mass of trace amount (mg)	/	/	/	--	--
Soluble Aluminium (Al) (mg/kg)	ND	ND	ND	50	28130
Soluble Antimony (Sb) (mg/kg)	ND	ND	ND	10	560
Soluble Arsenic (As) (mg/kg)	ND	ND	ND	10	47
Soluble Barium (Ba) (mg/kg)	ND	ND	ND	50	18750
Soluble Boron (B) (mg/kg)	ND	ND	ND	50	15000
Soluble Cadmium (Cd) (mg/kg)	ND	ND	ND	5	17
Soluble Chromium ⁺ (Cr) (mg/kg)	ND	ND	ND	1	--
Soluble Chromium (III) (Cr (III)) (mg/kg)	ND	ND	ND	1	460
Soluble Chromium (VI) (Cr (VI)) (mg/kg)	ND	ND	ND	0.010	0.053
Soluble Cobalt (Co) (mg/kg)	ND	ND	ND	10	130
Soluble Copper (Cu) (mg/kg)	ND	ND	ND	50	7700
Soluble Lead (Pb) (mg/kg)	ND	ND	ND	2.3	23
Soluble Manganese (Mn) (mg/kg)	ND	ND	ND	50	15000
Soluble Mercury (Hg) (mg/kg)	ND	ND	ND	10	94
Soluble Nickel (Ni) (mg/kg)	ND	ND	ND	10	930
Soluble Selenium (Se) (mg/kg)	ND	ND	ND	10	460
Soluble Strontium (Sr) (mg/kg)	ND	ND	ND	50	56000
Soluble Tin (Sn) (mg/kg)	ND	ND	ND	3.0	180000
Soluble Organic Tin -- (mg/kg)	ND	ND	ND	--	12
Soluble Zinc (Zn) (mg/kg)	ND	ND	ND	50	46000



SGS-CSTC Technical Services Co., Ltd.
Shenzhen Branch Testing Center Hardlines

Unless otherwise agreed in writing, this document is issued by the Company subject to its General Conditions of Service printed overleaf, available on request or accessible at <http://www.sgs.com/en/Terms-and-Conditions.aspx> and, for electronic format documents, subject to Terms and Conditions for Electronic Documents at <http://www.sgs.com/en/Terms-and-Conditions/Terms-e-Documents.aspx>. Attention is drawn to the limitation of liability, indemnification and jurisdiction issues defined therein. Any holder of this document is advised that information contained hereon reflects the Company's findings at the time of its intervention only and within the limits of Client's instructions, if any. The Company's sole responsibility is to its Client and this document does not exonerate parties to a transaction from exercising all their rights and obligations under the transaction documents. This document cannot be reproduced except in full, without prior written approval of the Company. Any unauthorized alteration, forgery or falsification of the content or appearance of this document is unlawful and offenders may be prosecuted to the fullest extent of the law. Unless otherwise stated the results shown in this test report refer only to the sample(s) tested and such sample(s) are retained for 30 days only.

Attention: To check the authenticity of testing / inspection report & certificate, please contact us at telephone:(86-755) 8307 1443, or email: CN.Doccheck@sgs.com

Room 101-501, Plant 4 & Room 101, Plant 2 & Room 101, Plant 3 & Room 301-501, Plant 3, Jianghao (Banian) Industrial Plant Area, No.430, Jihua Road, Banian Community, Banian Street, Longgang District, Shenzhen, Guangdong, China 518129 www.sgs.com.cn
中国·广东·深圳市龙岗区坂田街道坂田社区吉华路430号江灏(坂田)工业厂区厂房4号 101-901、2号101、3号301-501 邮编: 518129 t:(86-755) 25328888 sgs.china@sgs.com

Test Item(s)	Result(s)		MDL	Permissible Limit
Specimen No.	7	8	--	--
Mass of trace amount (mg)	/	/	--	--
Soluble Aluminium (Al) (mg/kg)	ND	ND	50	28130
Soluble Antimony (Sb) (mg/kg)	ND	ND	10	560
Soluble Arsenic (As) (mg/kg)	ND	ND	10	47
Soluble Barium (Ba) (mg/kg)	ND	ND	50	18750
Soluble Boron (B) (mg/kg)	ND	ND	50	15000
Soluble Cadmium (Cd) (mg/kg)	ND	ND	5	17
Soluble Chromium ⁺ (Cr) (mg/kg)	ND	ND	1	--
Soluble Chromium (III) (Cr (III)) (mg/kg)	ND	ND	1	460
Soluble Chromium (VI) (Cr (VI)) (mg/kg)	ND	ND	0.010	0.053
Soluble Cobalt (Co) (mg/kg)	ND	ND	10	130
Soluble Copper (Cu) (mg/kg)	ND	ND	50	7700
Soluble Lead (Pb) (mg/kg)	ND	ND	2.3	23
Soluble Manganese (Mn) (mg/kg)	ND	ND	50	15000
Soluble Mercury (Hg) (mg/kg)	ND	ND	10	94
Soluble Nickel (Ni) (mg/kg)	ND	ND	10	930
Soluble Selenium (Se) (mg/kg)	ND	ND	10	460
Soluble Strontium (Sr) (mg/kg)	ND	ND	50	56000
Soluble Tin (Sn) (mg/kg)	ND	ND	3.0	180000
Soluble Organic Tin -- (mg/kg)	ND	ND	--	12
Soluble Zinc (Zn) (mg/kg)	ND	ND	50	46000



SGS-CSTC Technical Services Co., Ltd.
Shenzhen Branch Testing Center Hardlines

Unless otherwise agreed in writing, this document is issued by the Company subject to its General Conditions of Service printed overleaf, available on request or accessible at <http://www.sgs.com/en/Terms-and-Conditions.aspx> and, for electronic format documents, subject to Terms and Conditions for Electronic Documents at <http://www.sgs.com/en/Terms-and-Conditions/Terms-e-Document.aspx>. Attention is drawn to the limitation of liability, indemnification and jurisdiction issues defined therein. Any holder of this document is advised that information contained hereon reflects the Company's findings at the time of its intervention only and within the limits of Client's instructions, if any. The Company's sole responsibility is to its Client and this document does not exonerate parties to a transaction from exercising all their rights and obligations under the transaction documents. This document cannot be reproduced except in full, without prior written approval of the Company. Any unauthorized alteration, forgery or falsification of the content or appearance of this document is unlawful and offenders may be prosecuted to the fullest extent of the law. Unless otherwise stated the results shown in this test report refer only to the sample(s) tested and such sample(s) are retained for 30 days only.

Attention: To check the authenticity of testing / inspection report & certificate, please contact us at telephone:(86-755) 8307 1443, or email: CN.Doccheck@sgs.com

Room 101-501, Plant 4 & Room 101, Plant 2 & Room 101, Plant 3 & Room 301-501, Plant 3, Jianghao (Banian) Industrial Plant Area, No.430, Jihua Road, Banian Community, Banian Street, Longgang District, Shenzhen, Guangdong, China 518129 www.sgs.com.cn
中国·广东·深圳市龙岗区坂田街道坂田社区吉华路430号江灏(坂田)工业厂区厂房4号 101-901、2号101、3号301-501 邮编: 518129 t:(86-755) 25328888 sgs.china@sgs.com

Test Item(s)	Result(s)		MDL	Permissible Limit
	9	10		
Specimen No.			--	--
Mass of trace amount (mg)	/	/	--	--
Soluble Aluminium (Al) (mg/kg)	ND	225	50	28130
Soluble Antimony (Sb) (mg/kg)	ND	ND	10	560
Soluble Arsenic (As) (mg/kg)	ND	ND	10	47
Soluble Barium (Ba) (mg/kg)	ND	ND	50	18750
Soluble Boron (B) (mg/kg)	ND	ND	50	15000
Soluble Cadmium (Cd) (mg/kg)	ND	ND	5	17
Soluble Chromium+ (Cr) (mg/kg)	ND	1	1	--
Soluble Chromium (III) (Cr (III)) (mg/kg)	ND	1	1	460
Soluble Chromium (VI) (Cr (VI)) (mg/kg)	ND	ND	0.010	0.053
Soluble Cobalt (Co) (mg/kg)	ND	ND	10	130
Soluble Copper (Cu) (mg/kg)	ND	ND	50	7700
Soluble Lead (Pb) (mg/kg)	ND	ND	2.3	23
Soluble Manganese (Mn) (mg/kg)	ND	ND	50	15000
Soluble Mercury (Hg) (mg/kg)	ND	ND	10	94
Soluble Nickel (Ni) (mg/kg)	ND	ND	10	930
Soluble Selenium (Se) (mg/kg)	ND	ND	10	460
Soluble Strontium (Sr) (mg/kg)	ND	ND	50	56000
Soluble Tin (Sn) (mg/kg)	ND	8.6	3.0	180000
Soluble Organic Tin -- (mg/kg)	ND	ND	--	12
Soluble Zinc (Zn) (mg/kg)	ND	246	50	46000



Unless otherwise agreed in writing, this document is issued by the Company subject to its General Conditions of Service printed overleaf, available on request or accessible at <http://www.sgs.com/en/Terms-and-Conditions.aspx> and, for electronic format documents, subject to Terms and Conditions for Electronic Documents at <http://www.sgs.com/en/Terms-and-Conditions/Terms-e-Documents.aspx>. Attention is drawn to the limitation of liability, indemnification and jurisdiction issues defined therein. Any holder of this document is advised that information contained hereon reflects the Company's findings at the time of its intervention only and within the limits of Client's instructions, if any. The Company's sole responsibility is to its Client and this document does not exonerate parties to a transaction from exercising all their rights and obligations under the transaction documents. This document cannot be reproduced except in full, without prior written approval of the Company. Any unauthorized alteration, forgery or falsification of the content or appearance of this document is unlawful and offenders may be prosecuted to the fullest extent of the law. Unless otherwise stated the results shown in this test report refer only to the sample(s) tested and such sample(s) are retained for 30 days only.

Attention: To check the authenticity of testing / inspection report & certificate, please contact us at telephone:(86-755) 8307 1443, or email: CN.Doccheck@sgs.com

Specimen Description:

1. Orange-yellow plastic (Carrot) (A)
2. Dull yellow plastic (Carrot) (B)
3. White tricot w/ light red printing (Rabbit) (C)
4. White tricot w/ green, light green printing (Rabbit) (D)
5. White satinet w/ red, blue, black printing (Sewn-in label) (E)
6. Green plastic (Rabbit, switch) (F)
7. Dark green soft plastic (Foot) (G)
8. Light red plastic (Nose) (H)
9. Transparent plastic (Hand, head, button) (I)
10. White coating (Pattern) (J)

- Note:
- mg/kg = milligram per kilogram
 - mg = milligram
 - ND = Not Detected (lower than MDL)
 - MDL = Method Detection Limit
 - 1% = 10000 mg/kg = 10000 ppm
 - + Soluble Chromium is not restricted by EN 71-3:2019+A1:2021, results shown only for reference

The below note(s) is(are) applicable in case the relevant superscript(s) and symbol(s) was(were) shown in the result table:

- * = Exceeds Permissible Limit

Remark: As received, below test portion(s) is(are) less than 10 mg, therefore such component(s) was(were) not tested for migration of certain elements, as specified in EN 71-3:2019+A1:2021.

Dark blue coating (Pattern) (K)



European Regulation (EC) No. 1907/2006 (REACH), Annex XVII and its Amendments – Cadmium Content

Method: With reference to CPSC-CH-E1003-09.1 / CPSC-CH-E1002-08.3 / CPSC-CH-E1001-08.3

For Plastic

Test Item(s)			Cadmium (Cd)
Permissible Limit (mg/kg)			100
Specimen Description	Alias No.	Tracing No.	Result(s) (mg/kg)
1. Orange-yellow plastic (Carrot) (A) + Dull yellow plastic (Carrot) (B) + Green plastic (Rabbit, switch) (F)	7	1	ND
2. Dark green soft plastic (Foot) (G) + Light red plastic (Nose) (H) + Transparent plastic (Hand, head, button) (I)	7	2	ND
3. Translucent w/ white plastic (Flat cable) (L) w/ Translucent w/ orange plastic (Flat cable) (M) w/ Translucent w/ black plastic (Flat cable) (N)	7	3	ND
4. Black foam w/ translucent white double-side adhesive (Inner) (O) w/ Transparent plastic film (Inner) (P) w/ Grey rubber w/ black layer backing (Button) (Q) w/ Transparent light yellow dry glue (Inner) (R)	7	4	ND
5. White, green printed cream PCB (Inner) (S) w/ Black material (IC) (T) w/ Green printed cream PCB (Speaker) (U) w/ Light brown PCB (Switch) (V)	7	5	ND
6. Black plastic (Switch) (W) w/ Black plastic (Button) (X) w/ Transparent w/ white plastic (LED) (Y) w/ Black plastic (Electronic component) (Z) w/ Black plastic (Speaker) (AA)	7	6	ND
7. Light grey plastic (Flat cable) (AB) w/ Black plastic film (Speaker) (AC) w/ Cream dry glue (Speaker) (AD) w/ Black dry glue (Speaker) (AE) w/ Transparent plastic sheet (Washer) (AF)	7	7	ND



Unless otherwise agreed in writing, this document is issued by the Company subject to its General Conditions of Service printed overleaf, available on request or accessible at <http://www.sgs.com/en/Terms-and-Conditions.aspx> and, for electronic format documents, subject to Terms and Conditions for Electronic Documents at <http://www.sgs.com/en/Terms-and-Conditions/Terms-e-Document.aspx>. Attention is drawn to the limitation of liability, indemnification and jurisdiction issues defined therein. Any holder of this document is advised that information contained hereon reflects the Company's findings at the time of its intervention only and within the limits of Client's instructions, if any. The Company's sole responsibility is to its Client and this document does not exonerate parties to a transaction from exercising all their rights and obligations under the transaction documents. This document cannot be reproduced except in full, without prior written approval of the Company. Any unauthorized alteration, forgery or falsification of the content or appearance of this document is unlawful and offenders may be prosecuted to the fullest extent of the law. Unless otherwise stated the results shown in this test report refer only to the sample(s) tested and such sample(s) are retained for 30 days only.

Attention: To check the authenticity of testing / inspection report & certificate, please contact us at telephone:(86-755) 8307 1443, or email: CN.Doccheck@sgs.com

For Paint on Painted Article

Test Item(s)	Cadmium (Cd)		
Permissible Limit (mg/kg)	1000		
Specimen Description	Alias No.	Tracing No.	Result(s) (mg/kg)
1. White coating (Pattern) (J) w/ Dark blue coating (Pattern) (K) w/ Light red coating (Inner) (AG)	6	1	ND

- Note:
- Permissible and Reference Limit specified by Commission Regulation (EU) No 494/2011 & Commission Regulation (EU) No 2016/217 amending Annex XVII of REACH Regulation (EC) No 1907/2006 (previously restricted under entry 23 of Regulation (EC) No 552/2009 and directive 91/338/EC).
 - mg/kg = milligram per kilogram
 - ND = Not Detected (lower than MDL)
 - MDL = Method Detection Limit = 5 mg/kg
 - 1% = 10000 mg/kg = 10000 ppm

The below note(s) is(are) applicable in case the relevant superscript(s) and symbol(s) was(were) shown in the result table:

- + Composite test has been performed as per client's request and the results are calculated using the minimum specimen weight
- ^ Result is made based on the composite test which may have the probability of one or more components that can lead to a failure conclusion. Individual test is highly recommended for each component
- * Exceeds Permissible or Reference Limit



Unless otherwise agreed in writing, this document is issued by the Company subject to its General Conditions of Service printed overleaf, available on request or accessible at <http://www.sgs.com/en/Terms-and-Conditions.aspx> and, for electronic format documents, subject to Terms and Conditions for Electronic Documents at <http://www.sgs.com/en/Terms-and-Conditions/Terms-e-Documents.aspx>. Attention is drawn to the limitation of liability, indemnification and jurisdiction issues defined therein. Any holder of this document is advised that information contained hereon reflects the Company's findings at the time of its intervention only and within the limits of Client's instructions, if any. The Company's sole responsibility is to its Client and this document does not exonerate parties to a transaction from exercising all their rights and obligations under the transaction documents. This document cannot be reproduced except in full, without prior written approval of the Company. Any unauthorized alteration, forgery or falsification of the content or appearance of this document is unlawful and offenders may be prosecuted to the fullest extent of the law. Unless otherwise stated the results shown in this test report refer only to the sample(s) tested and such sample(s) are retained for 30 days only.

Attention: To check the authenticity of testing / inspection report & certificate, please contact us at telephone:(86-755) 8307 1443, or email: CN.Doccheck@sgs.com

European Regulation (EC) No. 1907/2006 (REACH) Annex XVII and its amendment (EU) 2018/2005 – Phthalate content

Method: With reference to CPSC-CH-C1001-09.4

Analysis was performed by Gas Chromatography Mass Spectrometer (GC-MS) / High Performance Liquid Chromatography with Mass Spectrometer (HPLC-MS)

Materials can be placed in the mouth for toys & childcare articles

Test Item(s)	CAS No.	Result (s) (%)			MDL (%)	Permissible Limit (%)
Alias No.	--	11	11	11		
Tracing No.	--	1	2	3		
Specimen No.	--	1	2	3		
Dibutyl Phthalate (DBP)	84-74-2	ND	ND	ND	0.003	0.1
Benzylbutyl Phthalate (BBP)	85-68-7	ND	ND	ND	0.003	0.1
Di-(2-ethyl hexyl) phthalate (DEHP) / Dioctyl Phthalate (DOP)	117-81-7	ND	ND	ND	0.003	0.1
Diisononyl Phthalate (DINP)	28553-12-0 68515-48-0	ND	ND	ND	0.010	--
Di-n-octyl Phthalate (DNOP)	117-84-0	ND	ND	ND	0.003	--
Diisodecyl Phthalate (DIDP)	26761-40-0 68515-49-1	ND	ND	ND	0.010	--
Diisobutyl phthalate (DIBP)	84-69-5	ND	ND	ND	0.003	0.1
Total (DBP+BBP+DEHP+DIBP)		ND	ND	ND	--	0.1
Total (DINP+DNOP+DIDP)		ND	ND	ND	--	0.1

Specimen Description:

1. Orange-yellow plastic (Carrot) (A) + Dull yellow plastic (Carrot) (B) + Green plastic (Rabbit, switch) (F)
2. Dark green soft plastic (Foot) (G) w/ White coating (Pattern) (J) w/ Dark blue coating (Pattern) (K)
3. Light red plastic (Nose) (H) + Transparent plastic (Hand, head, button) (I)



SGS-CSTC Shenzhen Technical Services Co., Ltd.
Shenzhen Branch Testing Center Hardlines

Unless otherwise agreed in writing, this document is issued by the Company subject to its General Conditions of Service printed overleaf, available on request or accessible at <http://www.sgs.com/en/Terms-and-Conditions.aspx> and, for electronic format documents, subject to Terms and Conditions for Electronic Documents at <http://www.sgs.com/en/Terms-and-Conditions/Terms-e-Documents.aspx>. Attention is drawn to the limitation of liability, indemnification and jurisdiction issues defined therein. Any holder of this document is advised that information contained hereon reflects the Company's findings at the time of its intervention only and within the limits of Client's instructions, if any. The Company's sole responsibility is to its Client and this document does not exonerate parties to a transaction from exercising all their rights and obligations under the transaction documents. This document cannot be reproduced except in full, without prior written approval of the Company. Any unauthorized alteration, forgery or falsification of the content or appearance of this document is unlawful and offenders may be prosecuted to the fullest extent of the law. Unless otherwise stated the results shown in this test report refer only to the sample(s) tested and such sample(s) are retained for 30 days only.

Attention: To check the authenticity of testing / inspection report & certificate, please contact us at telephone:(86-755) 8307 1443, or email: CN.Doccheck@sgs.com

Room 101-501, Plant 4 & Room 101, Plant 2 & Room 101, Plant 3 & Room 301-501, Plant 3, Jianghao (Banian) Industrial Plant Area, No.430, Jihua Road, Banian Community, Banian Street, Longgang District, Shenzhen, Guangdong, China 518129 www.sgs.com.cn
中国·广东·深圳市龙岗区坂田街道坂田社区吉华路430号江灏(坂田)工业厂区厂房4号 101-901、2号101、3号301-501 邮编: 518129 t:(86-755) 25328888 sgs.china@sgs.com

Materials can not be placed in the mouth for toys & childcare articles or plasticized material in the other article.

Test Item(s)	CAS No.	Result (s) (%)		MDL (%)	Permissible Limit (%)
Alias No.	--	11	11		
Tracing No.	--	4	5		
Specimen No.	--	1	2		
Dibutyl Phthalate (DBP)	84-74-2	ND	ND	0.003	0.1
Benzylbutyl Phthalate (BBP)	85-68-7	ND	ND	0.003	0.1
Di-(2-ethyl hexyl) phthalate (DEHP) / Dioctyl Phthalate (DOP)	117-81-7	ND	ND	0.003	0.1
Diisobutyl phthalate (DIBP)	84-69-5	ND	ND	0.003	0.1
Total (DBP+BBP+DEHP+DIBP)		ND	ND	--	0.1

Test Item(s)	CAS No.	Result (s) (%)		MDL (%)	Permissible Limit (%)
Alias No.	--	11	11		
Tracing No.	--	6	7		
Specimen No.	--	3	4		
Dibutyl Phthalate (DBP)	84-74-2	ND	ND	0.003	0.1
Benzylbutyl Phthalate (BBP)	85-68-7	ND	ND	0.003	0.1
Di-(2-ethyl hexyl) phthalate (DEHP) / Dioctyl Phthalate (DOP)	117-81-7	ND	0.006	0.003	0.1
Diisobutyl phthalate (DIBP)	84-69-5	ND	ND	0.003	0.1
Total (DBP+BBP+DEHP+DIBP)		ND	0.006	--	0.1

Specimen Description:

1. Translucent w/ white plastic (Flat cable) (L) w/ Translucent w/ orange plastic (Flat cable) (M) w/ Translucent w/ black plastic (Flat cable) (N) w/ Light red coating (Inner) (AG)
2. Black foam w/ translucent white double-side adhesive (Inner) (O) w/ Transparent plastic film (Inner) (P) w/ Grey rubber w/ black layer backing (Button) (Q) w/ Transparent light yellow dry glue (Inner) (R)
3. Black plastic (Switch) (W) w/ Black plastic (Button) (X) w/ Transparent w/ white plastic (LED) (Y) w/ Black plastic (Electronic component) (Z) w/ Black plastic (Speaker) (AA)
4. Light grey plastic (Flat cable) (AB) w/ Black plastic film (Speaker) (AC) w/ Cream dry glue (Speaker) (AD) w/ Black dry glue (Speaker) (AE) w/ Transparent plastic sheet (Washer) (AF)



Unless otherwise agreed in writing, this document is issued by the Company subject to its General Conditions of Service printed overleaf, available on request or accessible at <http://www.sgs.com/en/Terms-and-Conditions.aspx> and, for electronic format documents, subject to Terms and Conditions for Electronic Documents at <http://www.sgs.com/en/Terms-and-Conditions/Terms-e-Documents.aspx>. Attention is drawn to the limitation of liability, indemnification and jurisdiction issues defined therein. Any holder of this document is advised that information contained hereon reflects the Company's findings at the time of its intervention only and within the limits of Client's instructions, if any. The Company's sole responsibility is to its Client and this document does not exonerate parties to a transaction from exercising all their rights and obligations under the transaction documents. This document cannot be reproduced except in full, without prior written approval of the Company. Any unauthorized alteration, forgery or falsification of the content or appearance of this document is unlawful and offenders may be prosecuted to the fullest extent of the law. Unless otherwise stated the results shown in this test report refer only to the sample(s) tested and such sample(s) are retained for 30 days only.

Attention: To check the authenticity of testing / inspection report & certificate, please contact us at telephone:(86-755) 8307 1443, or email: CN.Doccheck@sgs.com

- Note:
- ND = Not Detected (lower than MDL)
 - MDL = Method Detection Limit
 - % = percentage by weight

The below note(s) is(are) applicable in case the relevant superscript(s) and symbol(s) was(were) shown in the result table:

- + Composite test has been performed as per client's request and the results are calculated using the total specimen weight
- ^Δ Result is made based on the composite test which may have the probability of one or more components that can lead to a failure conclusion. Individual test is highly recommended for each component
- * Exceeds Permissible Limit



European Regulation (EC) No. 1907/2006 (REACH) Annex XVII and its amendment including (EU) 2020/2096 – AZO Colourants

Method: With reference to EN ISO 14362-1:2017 / EN ISO 14362-3:2017 / § 64 LFGB, BVL B 82.02-2:2013 / § 64 LFGB, BVL B 82.02-15:2013

Analysis was performed by Gas Chromatography Mass Spectrometer (GC-MS) / High Performance Liquid Chromatography with Diode Array Detector (HPLC-DAD)

No.	Forbidden Amines Substances	CAS-No.	Result (mg/kg)		MDL (mg/kg)	Permissible Limit (mg/kg)
			Direct reduction	Colorant extraction		
1.	4-Aminodiphenyl	92-67-1	ND	ND	5	30
2.	Benzidine	92-87-5	ND	ND	5	30
3.	4-Chloro- <i>o</i> -toluidine	95-69-2	ND	ND	5	30
4.	2-Naphthylamine	91-59-8	ND	ND	5	30
5.	<i>o</i> -Aminoazotoluene	97-56-3	ND	ND	5	30
6.	5-nitro- <i>o</i> -toluidine	99-55-8	ND	ND	5	30
7.	4-Chloroaniline	106-47-8	ND	ND	5	30
8.	2,4-Diaminoanisole	615-05-4	ND	ND	5	30
9.	4,4'-Diaminodiphenylmethane, MDA	101-77-9	ND	ND	5	30
10.	3,3'-Dichlorobenzidine	91-94-1	ND	ND	5	30
11.	3,3'-Dimethoxybenzidine	119-90-4	ND	ND	5	30
12.	3,3'-Dimethylbenzidine	119-93-7	ND	ND	5	30
13.	4,4'-methylenedi- <i>o</i> -toluidine	838-88-0	ND	ND	5	30
14.	<i>p</i> -Cresidine	120-71-8	ND	ND	5	30
15.	4,4'-Methylene-bis-(2-chloro-aniline)	101-14-4	ND	ND	5	30
16.	4,4'-Oxydianiline	101-80-4	ND	ND	5	30
17.	4,4'-Thiodianiline	139-65-1	ND	ND	5	30
18.	<i>o</i> -Toluidine	95-53-4	ND	ND	5	30
19.	2,4-Diaminotoluene, TDA	95-80-7	ND	ND	5	30
20.	2,4,5-Trimethylaniline	137-17-7	ND	ND	5	30
21.	4-Aminoazobenzene	60-09-3	ND	ND	5	30
22.	2-methoxyaniline	90-04-0	ND	ND	5	30

Specimen Description:

- White tricot w/ green, light green printing (Rabbit) (D) w/ White tricot w/ light red printing (Rabbit) (C) w/ White satinet w/ red, blue, black printing (Sewn-in label) (E)



SGS-CSTC Shenzhen Technical Services Co., Ltd.
Shenzhen Branch Testing Center Hardlines

Unless otherwise agreed in writing, this document is issued by the Company subject to its General Conditions of Service printed overleaf, available on request or accessible at <http://www.sgs.com/en/Terms-and-Conditions.aspx> and, for electronic format documents, subject to Terms and Conditions for Electronic Documents at <http://www.sgs.com/en/Terms-and-Conditions/Terms-e-Documents.aspx>. Attention is drawn to the limitation of liability, indemnification and jurisdiction issues defined therein. Any holder of this document is advised that information contained hereon reflects the Company's findings at the time of its intervention only and within the limits of Client's instructions, if any. The Company's sole responsibility is to its Client and this document does not exonerate parties to a transaction from exercising all their rights and obligations under the transaction documents. This document cannot be reproduced except in full, without prior written approval of the Company. Any unauthorized alteration, forgery or falsification of the content or appearance of this document is unlawful and offenders may be prosecuted to the fullest extent of the law. Unless otherwise stated the results shown in this test report refer only to the sample(s) tested and such sample(s) are retained for 30 days only.

Attention: To check the authenticity of testing / inspection report & certificate, please contact us at telephone:(86-755) 8307 1443, or email: CN.Doccheck@sgs.com

Room 101-501, Plant 4 & Room 101, Plant 2 & Room 101, Plant 3 & Room 301-501, Plant 3, Jianghao (Bantian) Industrial Plant Area, No.430, Jihua Road, Bantian Community, Bantian Street, Longgang District, Shenzhen, Guangdong, China 518129 www.sgs.com.cn
中国·广东·深圳市龙岗区坂田街道坂田社区吉华路430号江灏(坂田)工业厂区厂房4号 101-901、2号101、3号301-501 邮编: 518129 t:(86-755) 25328888 sgs.china@sgs.com

- Note:
- mg/kg = milligram per kilogram
 - MDL = Method Detection Limit
 - ND = Not Detected (lower than MDL)
 - Direct reduction refers to the extraction and reduction according to EN ISO 14362-1:2017 clause 10.2 and relevant clauses.

Colorant extraction refers to the colourant extraction and subsequent reduction according to EN ISO 14362-1:2017 clause 10.1 and relevant clauses.

- EN ISO 14362-1:2017 will enable further cleavage of 4-AAB (CAS No. 60-09-3) to non-forbidden amines: aniline and p-phenylenediamine. If aniline and/or p-phenylenediamine is not found, 4-AAB is considered as "ND" (i.e. <5.0 mg/kg). Otherwise, EN ISO 14362-3:2017 will be employed to verify the presence of 4-AAB.
- 4-Aminodiphenyl (CAS No. 92-67-1), 2-Naphthylamine (CAS No. 91-59-8) and 2,4-Diaminoanisole (CAS No. 615-05-4) can be indirectly generated from some colorants which do not contain these amines azo bound. The use of banned azo colorants cannot be reliably ascertained without additional information.
- In case PU is used, e.g. PU Foams or coatings, it cannot be ruled out that MDA (CAS No. 101-77-9) and TDA (CAS No. 95-80-7) can be released from PU material, not from banned azo colorant. Similarly, for pigment prints, MDA will be released from a chemical fixing agent.

The below note(s) is(are) applicable in case the relevant superscript(s) and symbol(s) was(were) shown in the result table:

- -- = Test method is not applicable due to identified specimen nature with respect to method(s).
- @ = The amine was detected according to EN ISO 14362-1:2017 with the reducing agent. A similar result was obtained from the procedure carried out without the reducing agent. According to EN ISO 14362-1:2017 Annex C.2.1.2.2, the amine originated from a source other than azo colorants.
- + Composite test has been performed as per client's request and the results are calculated using the total specimen weight
- ^ = The amine was detected according to EN ISO 14362-1:2017 with the reducing agent. Confirmation procedure was carried out without reducing agent, according to EN ISO 14362-1:2017 Annex C.2.1.2.2, the amine originated from azo colorants.
- Δ = Pass/Fail cannot be given due to the presence of substance(s) is between 5–30mg/kg. Detected substance(s) may come from one or more component(s) in composite testing. Individual testing of mixed components is highly recommended.
- * Exceeds Permissible Limit



European commission directive (EU) 2019/1929 – Formaldehyde

For Polymeric

Method: With reference to EN71-10: 2005 and EN71-11: 2005
 Analysis was performed by Ultraviolet Visible Spectrometer (UV-Vis)

Specimen Description	Alias No.	Tracing No.	MDL (mg/L)	Result(s) (mg/L)	Limit (mg/L)
1. Orange-yellow plastic (Carrot) (A) + Dull yellow plastic (Carrot) (B) + Green plastic (Rabbit, switch) (F) w/ White coating (Pattern) (J) w/ Dark blue coating (Pattern) (K)	4	1	0.8	ND	1.5
2. Dark green soft plastic (Foot) (G) + Light red plastic (Nose) (H) + Transparent plastic (Hand, head, button) (I)	4	2	0.8	ND	1.5
3. Translucent w/ white plastic (Flat cable) (L) + Translucent w/ orange plastic (Flat cable) (M) + Translucent w/ black plastic (Flat cable) (N)	4	3	0.8	ND	1.5
4. Black foam w/ translucent white double-side adhesive (Inner) (O) + Transparent plastic film (Inner) (P) + Grey rubber w/ black layer backing (Button) (Q)	4	4	0.8	ND	1.5
5. Transparent light yellow dry glue (Inner) (R) + Black plastic (Switch) (W) + Black plastic (Button) (X)	4	5	0.8	ND	1.5
6. Transparent w/ white plastic (LED) (Y) + Black plastic (Electronic component) (Z) + Black plastic (Speaker) (AA)	4	6	0.8	ND	1.5
7. Light grey plastic (Flat cable) (AB) + Transparent plastic sheet (Washer) (AF)	4	7	0.8	ND	1.5
8. Black plastic film (Speaker) (AC) + Cream dry glue (Speaker) (AD) + Black dry glue (Speaker) (AE)	4	8	0.8	ND	1.5



SGS-CSTC Shenzhen Technical Services Co., Ltd.
 Shenzhen Branch Testing Center Hardlines

Unless otherwise agreed in writing, this document is issued by the Company subject to its General Conditions of Service printed overleaf, available on request or accessible at <http://www.sgs.com/en/Terms-and-Conditions.aspx> and, for electronic format documents, subject to Terms and Conditions for Electronic Documents at <http://www.sgs.com/en/Terms-and-Conditions/Terms-e-Documents.aspx>. Attention is drawn to the limitation of liability, indemnification and jurisdiction issues defined therein. Any holder of this document is advised that information contained hereon reflects the Company's findings at the time of its intervention only and within the limits of Client's instructions, if any. The Company's sole responsibility is to its Client and this document does not exonerate parties to a transaction from exercising all their rights and obligations under the transaction documents. This document cannot be reproduced except in full, without prior written approval of the Company. Any unauthorized alteration, forgery or falsification of the content or appearance of this document is unlawful and offenders may be prosecuted to the fullest extent of the law. Unless otherwise stated the results shown in this test report refer only to the sample(s) tested and such sample(s) are retained for 30 days only.

Attention: To check the authenticity of testing / inspection report & certificate, please contact us at telephone:(86-755) 8307 1443, or email: CN.Doccheck@sgs.com

Room 101-501, Plant 4 & Room 101, Plant 2 & Room 101, Plant 3 & Room 301-501, Plant 3, Jianghao (Banian) Industrial Plant Area, No.430, Jihua Road, Banian Community, Banian Street, Longgang District, Shenzhen, Guangdong, China 518129 www.sgs.com.cn
 中国·广东·深圳市龙岗区坂田街道坂田社区吉华路430号江灏(坂田)工业厂区厂房4号 101-901、2号101、3号301-501 邮编: 518129 t:(86-755) 25328888 sgs.china@sgs.com

Test Report

No.: T52310270424TY

Date: APR 24, 2023

Page 23 of 38

- Note:
- mg/L = milligram per liter
 - ND = Not Detected (lower than MDL)
 - MDL = Method Detection Limit

The below note(s) is(are) applicable in case the relevant superscript(s) and symbol(s) was(were) shown in the result table:

- + Composite test has been performed as per client's request and the results are calculated using the total specimen weight
- Δ Result is made based on the composite test which may have the probability of one or more components that can lead to a failure conclusion. Individual test is highly recommended for each component
- * Exceeds Limit

For Textiles

Method: With reference to ISO 14184-1: 2011, Textiles- Determination of formaldehyde - Part 1: Free and Hydrolized formaldehyde (water extraction method)
 Analysis was performed by Ultraviolet Visible Spectrometer (UV-Vis)

Specimen Description	Alias No.	Tracing No.	MDL (mg/kg)	Result(s) (mg/kg)	Limit (mg/kg)	Client's Limit (mg/kg)
1. White tricot w/ green, light green printing (Rabbit) (D) w/ White tricot w/ light red printing (Rabbit) (C) w/ White satinet w/ red, blue, black printing (Sewn-in label) (E)	5	1	10	ND	30	16
2. White fabric (Inner) (AH) w/ White woven band w/ green fabric thread (Inner) (AI)	5	2	10	ND	30	--

- Note:
- mg/kg = milligram per kilogram
 - MDL = Method Detection Limit
 - ND = Not Detected (lower than MDL)

The below note(s) is(are) applicable in case the relevant superscript(s) and symbol(s) was(were) shown in the result table:

- + Composite test has been performed as per client's request and the results are calculated using the total specimen weight
- Δ Result is made based on the composite test which may have the probability of one or more components that can lead to a failure conclusion. Individual test is highly recommended for each component
- * Exceeds Limit



SGS-CSTC Technical Services Co., Ltd.
 Shenzhen Branch Testing Center Hardlines

Unless otherwise agreed in writing, this document is issued by the Company subject to its General Conditions of Service printed overleaf, available on request or accessible at <http://www.sgs.com/en/Terms-and-Conditions.aspx> and, for electronic format documents, subject to Terms and Conditions for Electronic Documents at <http://www.sgs.com/en/Terms-and-Conditions/Terms-e-Documents.aspx>. Attention is drawn to the limitation of liability, indemnification and jurisdiction issues defined therein. Any holder of this document is advised that information contained hereon reflects the Company's findings at the time of its intervention only and within the limits of Client's instructions, if any. The Company's sole responsibility is to its Client and this document does not exonerate parties to a transaction from exercising all their rights and obligations under the transaction documents. This document cannot be reproduced except in full, without prior written approval of the Company. Any unauthorized alteration, forgery or falsification of the content or appearance of this document is unlawful and offenders may be prosecuted to the fullest extent of the law. Unless otherwise stated the results shown in this test report refer only to the sample(s) tested and such sample(s) are retained for 30 days only.
 Attention: To check the authenticity of testing / inspection report & certificate, please contact us at telephone:(86-755) 8307 1443, or email: CN.Doccheck@sgs.com
 Room 101-501, Plant 4 & Room 101, Plant 2 & Room 101, Plant 3 & Room 301-501, Plant 3, Jianghao (Banian) Industrial Plant Area, No.430, Jihua Road, Banian Community, Banian Street, Longgang District, Shenzhen, Guangdong, China 518129 www.sgs.com.cn
 中国·广东·深圳市龙岗区坂田街道坂田社区吉华路430号江灏(坂田)工业厂区厂房4号101-901、2号101、3号101、3号301-501 邮编: 518129 t:(86-755) 25328888 sgs.china@sgs.com

Extractable Heavy Metal

Method: With reference to EN 16711-2:2015

Analysis was performed by Inductively Coupled Plasma – Mass Spectrometry (ICP-MS) and Ultraviolet Visible Spectrometer (UV-Vis).

Test Item(s)	Result(s) (mg/kg)	MDL (mg/kg)	Client's Limit (mg/kg)
Specimen No.	1		
Alias No.	13		
Tracing No.	1		
Cadmium (Cd)	ND	0.1	1
Lead (Pb)	ND	0.2	1
Chromium VI (CrVI)	ND	0.3	3

Specimen Description:

- White tricot w/ green, light green printing (Rabbit) (D) w/ White tricot w/ light red printing (Rabbit) (C) w/ White satinet w/ red, blue, black printing (Sewn-in label) (E)

- Note
- mg/kg = milligram per kilogram
 - ND = Not Detected (lower than MDL)
 - MDL = Method Detection Limit
 - 1% = 10000 mg/kg = 10000 ppm

The below note(s) is(are) applicable in case the relevant superscript(s) and symbol(s) was(were) shown in the result table:

- + Composite test has been performed as per client's request and the results are calculated using the total specimen weight
- * Exceeds Permissible Limit



SGS-CSTC Shenzhen Branch
Shenzhen Branch Testing Center Hardlines

Unless otherwise agreed in writing, this document is issued by the Company subject to its General Conditions of Service printed overleaf, available on request or accessible at <http://www.sgs.com/en/Terms-and-Conditions.aspx> and, for electronic format documents, subject to Terms and Conditions for Electronic Documents at <http://www.sgs.com/en/Terms-and-Conditions/Terms-e-Documents.aspx>. Attention is drawn to the limitation of liability, indemnification and jurisdiction issues defined therein. Any holder of this document is advised that information contained hereon reflects the Company's findings at the time of its intervention only and within the limits of Client's instructions, if any. The Company's sole responsibility is to its Client and this document does not exonerate parties to a transaction from exercising all their rights and obligations under the transaction documents. This document cannot be reproduced except in full, without prior written approval of the Company. Any unauthorized alteration, forgery or falsification of the content or appearance of this document is unlawful and offenders may be prosecuted to the fullest extent of the law. Unless otherwise stated the results shown in this test report refer only to the sample(s) tested and such sample(s) are retained for 30 days only.

Attention: To check the authenticity of testing / inspection report & certificate, please contact us at telephone:(86-755) 8307 1443, or email: CN.Doccheck@sgs.com

Room 101-501, Plant 4 & Room 101, Plant 2 & Room 101, Plant 3 & Room 301-501, Plant 3, Jianghao (Banian) Industrial Plant Area, No.430, Jihua Road, Banian Community, Banian Street, Longgang District, Shenzhen, Guangdong, China 518129 www.sgs.com.cn
中国·广东·深圳市龙岗区坂田街道坂田社区吉华路430号江灏(坂田)工业厂区厂房4号 101-901、2号101、3号301-501 邮编: 518129 t:(86-755) 25328888 sgs.china@sgs.com

Polycyclic Aromatic Hydrocarbon (PAHs) Content

Method: With reference to AfPS GS 2019:01 PAK method.

Analysis was performed by Gas Chromatography Mass Spectrometer (GC-MS)

Category 1: Materials intended to be placed in the mouth or materials coming into long-term contact with skin (More than 30s) during the intended use – In toys according to Directive 2019/48/EC or for the use by children up to 3 years of age

Test Item(s)	CAS No.	Result(s) (mg/kg)			MDL (mg/kg)	Client's Limit (mg/kg)
		1	2	3		
Specimen No.	--	1	2	3		
Alias No.	--	3	3	3		
Tracing No.	--	1	2	3		
1. Naphthalene	91-20-3	ND	ND	ND	0.1	1
2. Acenaphthylene	208-96-8	ND	ND	ND	0.1	--
3. Acenaphthene	83-32-9	ND	ND	ND	0.1	--
4. Fluorene	86-73-7	ND	ND	ND	0.1	--
5. Phenanthrene	85-01-8	ND	ND	ND	0.1	--
6. Anthracene	120-12-7	ND	ND	ND	0.1	--
7. Fluoranthene	206-44-0	ND	ND	ND	0.1	--
8. Pyrene	129-00-0	ND	ND	ND	0.1	--
9. Benzo[a]anthracene	56-55-3	ND	ND	ND	0.1	0.2
10. Chrysene	218-01-9	ND	ND	ND	0.1	0.2
11. Benzo[b]fluoranthene	205-99-2	ND	ND	ND	0.1	0.2
12. Benzo[k]fluoranthene	207-08-9	ND	ND	ND	0.1	0.2
13. Benzo[j]fluoranthene	205-82-3	ND	ND	ND	0.1	0.2
14. Benzo[a]pyrene	50-32-8	ND	ND	ND	0.1	0.2
15. Benzo[e]pyrene	192-97-2	ND	ND	ND	0.1	0.2
16. Indeno[1,2,3-cd]pyrene	193-39-5	ND	ND	ND	0.1	0.2
17. Dibenzo[a,h]anthracene	53-70-3	ND	ND	ND	0.1	0.2
18. Benzo[g,h,i]perylene	191-24-2	ND	ND	ND	0.1	0.2
Sum of 7 PAHs^	--	ND	ND	ND	--	1
Sum of 18 PAHs	--	ND	ND	ND	--	1


 SGS-CSTC Technical Services Co., Ltd.
 Shenzhen Branch Testing Center Hardlines

Unless otherwise agreed in writing, this document is issued by the Company subject to its General Conditions of Service printed overleaf, available on request or accessible at <http://www.sgs.com/en/Terms-and-Conditions.aspx> and, for electronic format documents, subject to Terms and Conditions for Electronic Documents at <http://www.sgs.com/en/Terms-and-Conditions/Terms-e-Documents.aspx>. Attention is drawn to the limitation of liability, indemnification and jurisdiction issues defined therein. Any holder of this document is advised that information contained hereon reflects the Company's findings at the time of its intervention only and within the limits of Client's instructions, if any. The Company's sole responsibility is to its Client and this document does not exonerate parties to a transaction from exercising all their rights and obligations under the transaction documents. This document cannot be reproduced except in full, without prior written approval of the Company. Any unauthorized alteration, forgery or falsification of the content or appearance of this document is unlawful and offenders may be prosecuted to the fullest extent of the law. Unless otherwise stated the results shown in this test report refer only to the sample(s) tested and such sample(s) are retained for 30 days only.

Attention: To check the authenticity of testing / inspection report & certificate, please contact us at telephone:(86-755) 8307 1443, or email: CN.Doccheck@sgs.com

Room 101-501, Plant 4 & Room 101, Plant 2 & Room 101, Plant 3 & Room 301-501, Plant 3, Jianghao (Bantian) Industrial Plant Area, No.430, Jihua Road, Bantian Community, Bantian Street, Longgang District, Shenzhen, Guangdong, China 518129 www.sgs.com.cn
 中国·广东·深圳市龙岗区坂田街道坂田社区吉华路430号江灏(坂田)工业区厂房4号 101-901、2号101、3号301-501 邮编: 518129 t:(86-755) 25328888 sgs.china@sgs.com

Test Item(s)	CAS No.	Result(s) (mg/kg)			MDL (mg/kg)	Client's Limit (mg/kg)
		4	5	6		
Specimen No.	--	4	5	6		
Alias No.	--	3	3	3		
Tracing No.	--	4	5	6		
1. Naphthalene	91-20-3	ND	ND	ND	0.1	1
2. Acenaphthylene	208-96-8	ND	ND	ND	0.1	--
3. Acenaphthene	83-32-9	ND	ND	ND	0.1	--
4. Fluorene	86-73-7	ND	ND	ND	0.1	--
5. Phenanthrene	85-01-8	ND	ND	ND	0.1	--
6. Anthracene	120-12-7	ND	ND	ND	0.1	--
7. Fluoranthene	206-44-0	ND	ND	ND	0.1	--
8. Pyrene	129-00-0	ND	ND	ND	0.1	--
9. Benzo[a]anthracene	56-55-3	ND	ND	ND	0.1	0.2
10. Chrysene	218-01-9	ND	ND	ND	0.1	0.2
11. Benzo[b]fluoranthene	205-99-2	ND	ND	ND	0.1	0.2
12. Benzo[k]fluoranthene	207-08-9	ND	ND	ND	0.1	0.2
13. Benzo[j]fluoranthene	205-82-3	ND	ND	ND	0.1	0.2
14. Benzo[a]pyrene	50-32-8	ND	ND	ND	0.1	0.2
15. Benzo[e]pyrene	192-97-2	ND	ND	ND	0.1	0.2
16. Indeno[1,2,3-cd]pyrene	193-39-5	ND	ND	ND	0.1	0.2
17. Dibenzo[a,h]anthracene	53-70-3	ND	ND	ND	0.1	0.2
18. Benzo[g,h,i]perylene	191-24-2	ND	ND	ND	0.1	0.2
Sum of 7 PAHs [^]	--	ND	ND	ND	--	1
Sum of 18 PAHs	--	ND	ND	ND	--	1



SGS-CSTC (Shenzhen) Technical Services Co., Ltd.
Shenzhen Branch Testing Center Hardlines

Unless otherwise agreed in writing, this document is issued by the Company subject to its General Conditions of Service printed overleaf, available on request or accessible at <http://www.sgs.com/en/Terms-and-Conditions.aspx> and, for electronic format documents, subject to Terms and Conditions for Electronic Documents at <http://www.sgs.com/en/Terms-and-Conditions/Terms-e-Documents.aspx>. Attention is drawn to the limitation of liability, indemnification and jurisdiction issues defined therein. Any holder of this document is advised that information contained hereon reflects the Company's findings at the time of its intervention only and within the limits of Client's instructions, if any. The Company's sole responsibility is to its Client and this document does not exonerate parties to a transaction from exercising all their rights and obligations under the transaction documents. This document cannot be reproduced except in full, without prior written approval of the Company. Any unauthorized alteration, forgery or falsification of the content or appearance of this document is unlawful and offenders may be prosecuted to the fullest extent of the law. Unless otherwise stated the results shown in this test report refer only to the sample(s) tested and such sample(s) are retained for 30 days only.

Attention: To check the authenticity of testing / inspection report & certificate, please contact us at telephone:(86-755) 8307 1443, or email: CN.Doccheck@sgs.com

Room 101-501, Plant 4 & Room 101, Plant 2 & Room 101, Plant 3 & Room 301-501, Plant 3, Jianghao (Banian) Industrial Plant Area, No.430, Jihua Road, Banian Community, Banian Street, Longgang District, Shenzhen, Guangdong, China 518129 www.sgs.com.cn
中国·广东·深圳市龙岗区坂田街道坂田社区吉华路430号江灏(坂田)工业厂区厂房4号 101-901、2号101、3号101、3号301-501 邮编: 518129 t:(86-755) 25328888 sgs.china@sgs.com

Test Item(s)	CAS No.	Result(s) (mg/kg)			MDL (mg/kg)	Client's Limit (mg/kg)
		7	8	9		
Specimen No.	--	7	8	9		
Alias No.	--	3	3	3		
Tracing No.	--	7	8	9		
1. Naphthalene	91-20-3	ND	ND	ND	0.1	1
2. Acenaphthylene	208-96-8	ND	ND	ND	0.1	--
3. Acenaphthene	83-32-9	ND	ND	ND	0.1	--
4. Fluorene	86-73-7	ND	ND	ND	0.1	--
5. Phenanthrene	85-01-8	ND	ND	ND	0.1	--
6. Anthracene	120-12-7	ND	ND	ND	0.1	--
7. Fluoranthene	206-44-0	ND	ND	ND	0.1	--
8. Pyrene	129-00-0	ND	ND	ND	0.1	--
9. Benzo[a]anthracene	56-55-3	ND	ND	ND	0.1	0.2
10. Chrysene	218-01-9	ND	ND	ND	0.1	0.2
11. Benzo[b]fluoranthene	205-99-2	ND	ND	ND	0.1	0.2
12. Benzo[k]fluoranthene	207-08-9	ND	ND	ND	0.1	0.2
13. Benzo[j]fluoranthene	205-82-3	ND	ND	ND	0.1	0.2
14. Benzo[a]pyrene	50-32-8	ND	ND	ND	0.1	0.2
15. Benzo[e]pyrene	192-97-2	ND	ND	ND	0.1	0.2
16. Indeno[1,2,3-cd]pyrene	193-39-5	ND	ND	ND	0.1	0.2
17. Dibenzo[a,h]anthracene	53-70-3	ND	ND	ND	0.1	0.2
18. Benzo[g,h,i]perylene	191-24-2	ND	ND	ND	0.1	0.2
Sum of 7 PAHs [^]	--	ND	ND	ND	--	1
Sum of 18 PAHs	--	ND	ND	ND	--	1

Specimen Description:

1. Orange-yellow plastic (Carrot) (A)
2. Dull yellow plastic (Carrot) (B)
3. White tricot w/ green, light green printing (Rabbit) (D) w/ White tricot w/ light red printing (Rabbit) (C)
4. White satinet w/ red, blue, black printing (Sewn-in label) (E)
5. Green plastic (Rabbit, switch) (F)
6. Dark green soft plastic (Foot) (G)
7. Light red plastic (Nose) (H)
8. Transparent plastic (Hand, head, button) (I)
9. White coating (Pattern) (J) w/ Dark blue coating (Pattern) (K)



SGS-CSTC Shenzhen Technical Services Co., Ltd.
Shenzhen Branch Testing Center Hardlines

Unless otherwise agreed in writing, this document is issued by the Company subject to its General Conditions of Service printed overleaf, available on request or accessible at <http://www.sgs.com/en/Terms-and-Conditions.aspx> and, for electronic format documents, subject to Terms and Conditions for Electronic Documents at <http://www.sgs.com/en/Terms-and-Conditions/Terms-e-Documents.aspx>. Attention is drawn to the limitation of liability, indemnification and jurisdiction issues defined therein. Any holder of this document is advised that information contained hereon reflects the Company's findings at the time of its intervention only and within the limits of Client's instructions, if any. The Company's sole responsibility is to its Client and this document does not exonerate parties to a transaction from exercising all their rights and obligations under the transaction documents. This document cannot be reproduced except in full, without prior written approval of the Company. Any unauthorized alteration, forgery or falsification of the content or appearance of this document is unlawful and offenders may be prosecuted to the fullest extent of the law. Unless otherwise stated the results shown in this test report refer only to the sample(s) tested and such sample(s) are retained for 30 days only.

Attention: To check the authenticity of testing / inspection report & certificate, please contact us at telephone:(86-755) 8307 1443, or email: CN.Doccheck@sgs.com

Room 101-501, Plant 4 & Room 101, Plant 2 & Room 101, Plant 3 & Room 301-501, Plant 3, Jianghao (Banian) Industrial Plant Area, No.430, Jihua Road, Banian Community, Banian Street, Longgang District, Shenzhen, Guangdong, China 518129 www.sgs.com.cn
中国·广东·深圳市龙岗区坂田街道坂田社区吉华路430号江灏(坂田)工业厂区厂房4号 101-901、2号101、3号301-501 邮编: 518129 t:(86-755) 25328888 sgs.china@sgs.com

- Note:
- ND = Not Detected (lower than MDL)
 - MDL = Method Detection Limit
 - mg/kg = milligram per kilogram
 - ^ 7 PAHs including Acenaphthylene, Acenaphthene, Fluorene, Phenanthrene, Anthracene, Fluoranthene & Pyrene

The below note(s) is(are) applicable in case the relevant superscript(s) and symbol(s) was(were) shown in the result table:

- + Composite test has been performed as per client's request and the results are calculated using the total specimen weight
- ^Δ Result is made based on the composite test which may have the probability of one or more components that can lead to a failure conclusion. Individual test is highly recommended for each component
- * Exceeds Client's limit

Lead Content

Method: With reference to CPSC-CH-E1003-09.1 / CPSC-CH-E1002-08.3 / CPSC-CH-E1001-08.3

Test Item(s)	Unit	1	2	MDL	Client's Limit
Alias No.	--	8	8	--	--
Tracing No.	--	1	2	--	--
Lead (Pb)	mg/kg	ND	ND	10	40

Specimen Description:

1. Orange-yellow plastic (Carrot) (A) + Dull yellow plastic (Carrot) (B) + Green plastic (Rabbit, switch) (F)
2. Dark green soft plastic (Foot) (G) + Light red plastic (Nose) (H) + Transparent plastic (Hand, head, button) (I)

- Note:
- mg/kg = milligram per kilogram
 - MDL = Method Detection Limit
 - ND = Not Detected (lower than MDL)

The below note(s) is(are) applicable in case the relevant superscript(s) and symbol(s) was(were) shown in the result table:

- + Composite test has been performed as per client's request and the results are calculated using the minimum specimen weight
- * Exceeds Client's Limit



Unless otherwise agreed in writing, this document is issued by the Company subject to its General Conditions of Service printed overleaf, available on request or accessible at <http://www.sgs.com/en/Terms-and-Conditions.aspx> and, for electronic format documents, subject to Terms and Conditions for Electronic Documents at <http://www.sgs.com/en/Terms-and-Conditions/Terms-e-Documents.aspx>. Attention is drawn to the limitation of liability, indemnification and jurisdiction issues defined therein. Any holder of this document is advised that information contained hereon reflects the Company's findings at the time of its intervention only and within the limits of Client's instructions, if any. The Company's sole responsibility is to its Client and this document does not exonerate parties to a transaction from exercising all their rights and obligations under the transaction documents. This document cannot be reproduced except in full, without prior written approval of the Company. Any unauthorized alteration, forgery or falsification of the content or appearance of this document is unlawful and offenders may be prosecuted to the fullest extent of the law. Unless otherwise stated the results shown in this test report refer only to the sample(s) tested and such sample(s) are retained for 30 days only.

Attention: To check the authenticity of testing / inspection report & certificate, please contact us at telephone:(86-755) 8307 1443, or email: CN.Doccheck@sgs.com

Cadmium Content

Method: With reference to CPSC-CH-E1003-09.1 / CPSC-CH-E1002-08.3 / CPSC-CH-E1001-08.3

Test Item(s)	Unit	1	2	MDL	Client's Limit
Alias No.	--	9	9	--	--
Tracing No.	--	1	2	--	--
Cadmium (Cd)	mg/kg	ND	ND	5	40

Specimen Description:

1. Orange-yellow plastic (Carrot) (A) + Dull yellow plastic (Carrot) (B) + Green plastic (Rabbit, switch) (F)
2. Dark green soft plastic (Foot) (G) + Light red plastic (Nose) (H) + Transparent plastic (Hand, head, button) (I)

- Note:
- mg/kg = milligram per kilogram
 - MDL = Method Detection Limit
 - ND = Not Detected (lower than MDL)

The below note(s) is(are) applicable in case the relevant superscript(s) and symbol(s) was(were) shown in the result table:

- + Composite test has been performed as per client's request and the results are calculated using the minimum specimen weight
- * Exceeds Client's Limit



Unless otherwise agreed in writing, this document is issued by the Company subject to its General Conditions of Service printed overleaf, available on request or accessible at <http://www.sgs.com/en/Terms-and-Conditions.aspx> and, for electronic format documents, subject to Terms and Conditions for Electronic Documents at <http://www.sgs.com/en/Terms-and-Conditions/Terms-e-Document.aspx>. Attention is drawn to the limitation of liability, indemnification and jurisdiction issues defined therein. Any holder of this document is advised that information contained hereon reflects the Company's findings at the time of its intervention only and within the limits of Client's instructions, if any. The Company's sole responsibility is to its Client and this document does not exonerate parties to a transaction from exercising all their rights and obligations under the transaction documents. This document cannot be reproduced except in full, without prior written approval of the Company. Any unauthorized alteration, forgery or falsification of the content or appearance of this document is unlawful and offenders may be prosecuted to the fullest extent of the law. Unless otherwise stated the results shown in this test report refer only to the sample(s) tested and such sample(s) are retained for 30 days only.

Attention: To check the authenticity of testing / inspection report & certificate, please contact us at telephone:(86-755) 8307 1443, or email: CN.Doccheck@sgs.com

Phthalates Content

Method: With reference to CPSC-CH-C1001-09.4

Analysis was performed by Gas Chromatography Mass Spectrometer (GC-MS) / High Performance Liquid Chromatography with Mass Spectrometer (HPLC-MS)

Test Item(s)	CAS No.	Result(s) (%)			MDL (%)	Client's Limit (%)
		1	2	3		
Specimen No.	--	12	12	12		
Alias No.	--	1	2	3		
Tracing No.	--	1	2	3		
Dibutyl Phthalate (DBP)	84-74-2	ND	ND	ND	0.003	--
Benzylbutyl Phthalate (BBP)	85-68-7	ND	ND	ND	0.003	--
Di-(2-ethyl hexyl) phthalate (DEHP) / Dioctyl Phthalate (DOP)	117-81-7	ND	ND	ND	0.003	--
Diisononyl Phthalate (DINP)	28553-12-0 68515-48-0	ND	ND	ND	0.010	--
Di-n-octyl Phthalate (DNOP)	117-84-0	ND	ND	ND	0.003	--
Diisodecyl Phthalate (DIDP)	26761-40-0 68515-49-1	ND	ND	ND	0.010	--
Diisobutyl phthalate (DIBP)	84-69-5	ND	ND	ND	0.003	0.1
Di-n-Hexyl phthalate (DHP/DnHP/DHEXP)	84-75-3	ND	ND	ND	0.003	0.1
N-pentyl-isopentylphthalate (nPiPP)	776297-69-9	ND	ND	ND	0.003	0.1
Diisopentyl phthalate (DiPP)	605-50-5	ND	ND	ND	0.003	0.1
Bis(2-methoxyethyl) phthalate (DMEP)	117-82-8	ND	ND	ND	0.003	0.1
Di-n-pentyl phthalate(DPP/DPEP/DPENP)	131-18-0	ND	ND	ND	0.003	0.1
Dicyclohexyl phthalate (DCHP)	84-61-7	ND	ND	ND	0.003	0.1
1,2-Benzenedicarboxylic acid, bis(2-propylheptyl) ester (DPHP)	53306-54-0	ND	ND	ND	0.010	0.1
1,2-benzenedicarboxylic acid, di-C6-8-branched alkyl esters, C7-rich (DIHP)	71888-89-6	ND	ND	ND	0.010	0.1
Benzenedicarboxylic acid, di-(C7-11)-branched and linear alkyl esters (DHNUP)	68515-42-4	ND	ND	ND	0.010	0.1
1,2-Benzenedicarboxylic acid, dipentylester, branched and linear ^	84777-06-0	ND	ND	ND	0.003	0.1
1,2-Benzenedicarboxylic acid, dihexyl ester, branched and linear	68515-50-4	ND	ND	ND	0.003	0.1
1,2-benzenedicarboxylic acid, di-C6-10-alkyl esters; 1,2-benzenedicarboxylic acid, mixed decyl and hexyl and octyl diesters with ≥ 0.3% of dihexyl phthalate	68515-51-5 68648-93-1	ND	ND	ND	0.025	0.1
Total (DBP+BBP+DEHP)		ND	ND	ND	--	0.1
Total (DINP+DNOP+DIDP)		ND	ND	ND	--	0.1



Test Item(s)	CAS No.	Result(s) (%)		MDL (%)	Client's Limit (%)
		4	5		
Specimen No.	--	4	5		
Alias No.	--	12	12		
Tracing No.	--	4	5		
Dibutyl Phthalate (DBP)	84-74-2	ND	ND	0.003	--
Benzylbutyl Phthalate (BBP)	85-68-7	ND	ND	0.003	--
Di-(2-ethyl hexyl) phthalate (DEHP) / Dioctyl Phthalate (DOP)	117-81-7	ND	ND	0.003	--
Diisononyl Phthalate (DINP)	28553-12-0 68515-48-0	ND	ND	0.010	--
Di-n-octyl Phthalate (DNOP)	117-84-0	ND	ND	0.003	--
Diisodecyl Phthalate (DIDP)	26761-40-0 68515-49-1	ND	ND	0.010	--
Diisobutyl phthalate (DIBP)	84-69-5	ND	ND	0.003	0.1
Di-n-Hexyl phthalate (DHP/DnHP/DHEXP)	84-75-3	ND	ND	0.003	0.1
N-pentyl-isopentylphthalate (nPiPP)	776297-69-9	ND	ND	0.003	0.1
Diisopentyl phthalate (DiPP)	605-50-5	ND	ND	0.003	0.1
Bis(2-methoxyethyl) phthalate (DMEP)	117-82-8	ND	ND	0.003	0.1
Di-n-pentyl phthalate(DPP/DPEP/DPENP)	131-18-0	ND	ND	0.003	0.1
Dicyclohexyl phthalate (DCHP)	84-61-7	ND	ND	0.003	0.1
1,2-Benzenedicarboxylic acid, bis(2-propylheptyl) ester (DPHP)	53306-54-0	ND	ND	0.010	0.1
1,2-benzenedicarboxylic acid, di-C6-8-branched alkyl esters, C7-rich (DIHP)	71888-89-6	ND	ND	0.010	0.1
Benzenedicarboxylic acid, di-(C7-11)-branched and linear alkyl esters (DHNUP)	68515-42-4	ND	ND	0.010	0.1
1,2-Benzenedicarboxylic acid, dipentylester, branched and linear ^	84777-06-0	ND	ND	0.003	0.1
1,2-Benzenedicarboxylic acid, dihexyl ester, branched and linear	68515-50-4	ND	ND	0.003	0.1
1,2-benzenedicarboxylic acid, di-C6-10-alkyl esters; 1,2-benzenedicarboxylic acid, mixed decyl and hexyl and octyl diesters with ≥ 0.3% of dihexyl phthalate	68515-51-5 68648-93-1	ND	ND	0.025	0.1
Total (DBP+BBP+DEHP)		ND	ND	--	0.1
Total (DINP+DNOP+DIDP)		ND	ND	--	0.1



Unless otherwise agreed in writing, this document is issued by the Company subject to its General Conditions of Service printed overleaf, available on request or accessible at <http://www.sgs.com/en/Terms-and-Conditions.aspx> and, for electronic format documents, subject to Terms and Conditions for Electronic Documents at <http://www.sgs.com/en/Terms-and-Conditions/Terms-e-Documents.aspx>. Attention is drawn to the limitation of liability, indemnification and jurisdiction issues defined therein. Any holder of this document is advised that information contained hereon reflects the Company's findings at the time of its intervention only and within the limits of Client's instructions, if any. The Company's sole responsibility is to its Client and this document does not exonerate parties to a transaction from exercising all their rights and obligations under the transaction documents. This document cannot be reproduced except in full, without prior written approval of the Company. Any unauthorized alteration, forgery or falsification of the content or appearance of this document is unlawful and offenders may be prosecuted to the fullest extent of the law. Unless otherwise stated the results shown in this test report refer only to the sample(s) tested and such sample(s) are retained for 30 days only.

Attention: To check the authenticity of testing / inspection report & certificate, please contact us at telephone:(86-755) 8307 1443, or email: CN.Doccheck@sgs.com

Test Item(s)	CAS No.	Result(s) (%)		MDL (%)	Client's Limit (%)
		6	7		
Specimen No.	--	12	12		
Alias No.	--	6	7		
Tracing No.	--	12	12		
Dibutyl Phthalate (DBP)	84-74-2	ND	ND	0.003	--
Benzylbutyl Phthalate (BBP)	85-68-7	ND	ND	0.003	--
Di-(2-ethyl hexyl) phthalate (DEHP) / Dioctyl Phthalate (DOP)	117-81-7	ND	0.006	0.003	--
Diisononyl Phthalate (DINP)	28553-12-0 68515-48-0	ND	ND	0.010	--
Di-n-octyl Phthalate (DNOP)	117-84-0	ND	ND	0.003	--
Diisodecyl Phthalate (DIDP)	26761-40-0 68515-49-1	ND	ND	0.010	--
Diisobutyl phthalate (DIBP)	84-69-5	ND	ND	0.003	0.1
Di-n-Hexyl phthalate (DHP/DnHP/DHEXP)	84-75-3	ND	ND	0.003	0.1
N-pentyl-isopentylphthalate (nPiPP)	776297-69-9	ND	ND	0.003	0.1
Diisopentyl phthalate (DiPP)	605-50-5	ND	ND	0.003	0.1
Bis(2-methoxyethyl) phthalate (DMEP)	117-82-8	ND	ND	0.003	0.1
Di-n-pentyl phthalate(DPP/DPEP/DPENP)	131-18-0	ND	ND	0.003	0.1
Dicyclohexyl phthalate (DCHP)	84-61-7	ND	ND	0.003	0.1
1,2-Benzenedicarboxylic acid, bis(2-propylheptyl) ester (DPHP)	53306-54-0	ND	ND	0.010	0.1
1,2-benzenedicarboxylic acid, di-C6-8-branched alkyl esters, C7-rich (DIHP)	71888-89-6	ND	ND	0.010	0.1
Benzenedicarboxylic acid, di-(C7-11)-branched and linear alkyl esters (DHNUP)	68515-42-4	ND	ND	0.010	0.1
1,2-Benzenedicarboxylic acid, dipentylester, branched and linear ^	84777-06-0	ND	ND	0.003	0.1
1,2-Benzenedicarboxylic acid, dihexyl ester, branched and linear	68515-50-4	ND	ND	0.003	0.1
1,2-benzenedicarboxylic acid, di-C6-10-alkyl esters; 1,2-benzenedicarboxylic acid, mixed decyl and hexyl and octyl diesters with ≥ 0.3% of dihexyl phthalate	68515-51-5 68648-93-1	ND	ND	0.025	0.1
Total (DBP+BBP+DEHP)		ND	0.006	--	0.1
Total (DINP+DNOP+DIDP)		ND	ND	--	0.1



Unless otherwise agreed in writing, this document is issued by the Company subject to its General Conditions of Service printed overleaf, available on request or accessible at <http://www.sgs.com/en/Terms-and-Conditions.aspx> and, for electronic format documents, subject to Terms and Conditions for Electronic Documents at <http://www.sgs.com/en/Terms-and-Conditions/Terms-e-Documents.aspx>. Attention is drawn to the limitation of liability, indemnification and jurisdiction issues defined therein. Any holder of this document is advised that information contained hereon reflects the Company's findings at the time of its intervention only and within the limits of Client's instructions, if any. The Company's sole responsibility is to its Client and this document does not exonerate parties to a transaction from exercising all their rights and obligations under the transaction documents. This document cannot be reproduced except in full, without prior written approval of the Company. Any unauthorized alteration, forgery or falsification of the content or appearance of this document is unlawful and offenders may be prosecuted to the fullest extent of the law. Unless otherwise stated the results shown in this test report refer only to the sample(s) tested and such sample(s) are retained for 30 days only.

Attention: To check the authenticity of testing / inspection report & certificate, please contact us at telephone:(86-755) 8307 1443, or email: CN.Doccheck@sgs.com

Room 101-501, Plant 4 & Room 101, Plant 2 & Room 101, Plant 3 & Room 301-501, Plant 3, Jianghao (Banian) Industrial Plant Area, No.430, Jihua Road, Banian Community, Banian Street, Longgang District, Shenzhen, Guangdong, China 518129 www.sgs.com.cn
中国·广东·深圳市龙岗区坂田街道坂田社区吉华路430号江灏(坂田)工业厂区厂房4号 101-901、2号 101、3号 301-501 邮编: 518129 t:(86-755) 25328888 sgs.china@sgs.com

Specimen Description:

1. Orange-yellow plastic (Carrot) (A) + Dull yellow plastic (Carrot) (B) + Green plastic (Rabbit, switch) (F)
2. Dark green soft plastic (Foot) (G) w/ White coating (Pattern) (J) w/ Dark blue coating (Pattern) (K)
3. Light red plastic (Nose) (H) + Transparent plastic (Hand, head, button) (I)
4. Translucent w/ white plastic (Flat cable) (L) w/ Translucent w/ orange plastic (Flat cable) (M) w/ Translucent w/ black plastic (Flat cable) (N) w/ Light red coating (Inner) (AG)
5. Black foam w/ translucent white double-side adhesive (Inner) (O) w/ Transparent plastic film (Inner) (P) w/ Grey rubber w/ black layer backing (Button) (Q) w/ Transparent light yellow dry glue (Inner) (R)
6. Black plastic (Switch) (W) w/ Black plastic (Button) (X) w/ Transparent w/ white plastic (LED) (Y) w/ Black plastic (Electronic component) (Z) w/ Black plastic (Speaker) (AA)
7. Light grey plastic (Flat cable) (AB) w/ Black plastic film (Speaker) (AC) w/ Cream dry glue (Speaker) (AD) w/ Black dry glue (Speaker) (AE) w/ Transparent plastic sheet (Washer) (AF)

- Note:
- MDL = Method Detection Limit
 - ND = Not Detected (lower than MDL)
 - % = percentage by weight

The below note(s) is(are) applicable in case the relevant superscript(s) and symbol(s) was(were) shown in the result table:

- [^] = a mixture of i) Di-n-pentyl phthalate (DPP); ii) N-pentyl-isopentylphthalate (nPiPP) and iii) Diisopentyl phthalate (DiPP)
- ^Δ Result is made based on the composite test which may have the probability of one or more components that can lead to a failure conclusion. Individual test is highly recommended for each component
- + Composite test has been performed as per client's request and the results are calculated using the total specimen weight
- * Exceeds Client's Limit



Alkylphenol Ethoxylates (APEOs) – Nonylphenol Ethoxylates (NPEOs) and Octylphenol Ethoxylates (OPEOs) content

Method: Solvent extraction

Analysis was performed by High Performance Liquid Chromatography with Diode Array Detector & Mass Spectrometer (HPLC-DAD-MS) / Triple Quadrupole Liquid Chromatograph Mass Spectrometer (LC-MS/MS)

Test Item(s)	Result(s) (mg/kg)		MDL (mg/kg)	Client's Limit (mg/kg)
	1	2		
Specimen No.	15	15		
Alias No.	1	2		
Tracing No.	ND	ND	30	100
Nonylphenol Ethoxylates (NPEOs)	ND	ND	30	100
Octylphenol Ethoxylates (OPEOs)	ND	ND	30	100

Specimen Description:

1. White tricot w/ green, light green printing (Rabbit) (D) w/ White tricot w/ light red printing (Rabbit) (C) w/ White satinet w/ red, blue, black printing (Sewn-in label) (E)
2. White fabric (Inner) (AH) w/ White woven band w/ green fabric thread (Inner) (AI)

- Note:
- mg/kg = milligram per kilogram
 - MDL = Method Detection Limit
 - ND = Not Detected (lower than MDL)
 - 1% = 10000 mg/kg = 10000 ppm

The below note(s) is(are) applicable in case the relevant superscript(s) and symbol(s) was(were) shown in the result table:

- + Composite test has been performed as per client's request and the results are calculated using the total specimen weight
- Δ Result is made based on the composite test which may have the probability of one or more components that can lead to a failure conclusion. Individual test is highly recommended for each component
- * Exceeds Client's Limit



Unless otherwise agreed in writing, this document is issued by the Company subject to its General Conditions of Service printed overleaf, available on request or accessible at <http://www.sgs.com/en/Terms-and-Conditions.aspx> and, for electronic format documents, subject to Terms and Conditions for Electronic Documents at <http://www.sgs.com/en/Terms-and-Conditions/Terms-e-Documents.aspx>. Attention is drawn to the limitation of liability, indemnification and jurisdiction issues defined therein. Any holder of this document is advised that information contained hereon reflects the Company's findings at the time of its intervention only and within the limits of Client's instructions, if any. The Company's sole responsibility is to its Client and this document does not exonerate parties to a transaction from exercising all their rights and obligations under the transaction documents. This document cannot be reproduced except in full, without prior written approval of the Company. Any unauthorized alteration, forgery or falsification of the content or appearance of this document is unlawful and offenders may be prosecuted to the fullest extent of the law. Unless otherwise stated the results shown in this test report refer only to the sample(s) tested and such sample(s) are retained for 30 days only.

Attention: To check the authenticity of testing / inspection report & certificate, please contact us at telephone:(86-755) 8307 1443, or email: CN.Doccheck@sgs.com

Alkylphenol (AP) – Nonylphenol (NP) and Octylphenol (OP) content

Method: Solvent extraction

Analysis was performed by High Performance Liquid Chromatography with Diode Array Detector & Mass Spectrometer (HPLC-DAD-MS) / Gas Chromatography Mass Spectrometer (GC-MS)

Test Item(s)	Result(s) (mg/kg)		MDL (mg/kg)	Client's Limit (mg/kg)
	1	2		
Specimen No.	16	16		
Alias No.	16	16		
Tracing No.	1	2		
Nonylphenol (NP)	ND	ND	5	100
Octylphenol (OP)	ND	ND	5	100

Specimen Description:

- White tricot w/ green, light green printing (Rabbit) (D) w/ White tricot w/ light red printing (Rabbit) (C) w/ White satinet w/ red, blue, black printing (Sewn-in label) (E)
- White fabric (Inner) (AH) w/ White woven band w/ green fabric thread (Inner) (AI)

- Note:
- mg/kg = milligram per kilogram
 - MDL = Method Detection Limit
 - ND = Not Detected (lower than MDL)
 - 1% = 10000 mg/kg = 10000 ppm

The below note(s) is(are) applicable in case the relevant superscript(s) and symbol(s) was(were) shown in the result table:

- + Composite test has been performed as per client's request and the results are calculated using the total specimen weight
- * Exceeds Client's Limit



Unless otherwise agreed in writing, this document is issued by the Company subject to its General Conditions of Service printed overleaf, available on request or accessible at <http://www.sgs.com/en/Terms-and-Conditions.aspx> and, for electronic format documents, subject to Terms and Conditions for Electronic Documents at <http://www.sgs.com/en/Terms-and-Conditions/Terms-e-Document.aspx>. Attention is drawn to the limitation of liability, indemnification and jurisdiction issues defined therein. Any holder of this document is advised that information contained hereon reflects the Company's findings at the time of its intervention only and within the limits of Client's instructions, if any. The Company's sole responsibility is to its Client and this document does not exonerate parties to a transaction from exercising all their rights and obligations under the transaction documents. This document cannot be reproduced except in full, without prior written approval of the Company. Any unauthorized alteration, forgery or falsification of the content or appearance of this document is unlawful and offenders may be prosecuted to the fullest extent of the law. Unless otherwise stated the results shown in this test report refer only to the sample(s) tested and such sample(s) are retained for 30 days only.

Attention: To check the authenticity of testing / inspection report & certificate, please contact us at telephone:(86-755) 8307 1443, or email: CN.Doccheck@sgs.com

O-phenylphenol (OPP) content

Method: With reference to ISO 17070/ §64 LFGB, BVL, B 82.02.8-2001 KOH method
 Analysis was performed by Gas Chromatography Mass Spectrometer (GC-MS) / Gas Chromatography Electron Capture Detector (GC-ECD)

Test Item(s) Specimen No.	Result(s) (mg/kg)		MDL (mg/kg)	Client's Limit (mg/kg)
	1	2		
O-phenylphenol (OPP)	ND	ND	0.5	100

Specimen Description:

- White tricot w/ green, light green printing (Rabbit) (D) w/ White tricot w/ light red printing (Rabbit) (C) w/ White satinet w/ red, blue, black printing (Sewn-in label) (E)
- White fabric (Inner) (AH) w/ White woven band w/ green fabric thread (Inner) (AI)

- Note:
- mg/kg = milligram per kilogram
 - MDL = Method Detection Limit
 - ND = Not Detected (lower than MDL)

The below note(s) is(are) applicable in case the relevant superscript(s) and symbol(s) was(were) shown in the result table:

- * Exceeds Client's Limit



SGS-CSTC Standards Technical Services Co., Ltd.
 Shenzhen Branch Testing Center Hardlines

Unless otherwise agreed in writing, this document is issued by the Company subject to its General Conditions of Service printed overleaf, available on request or accessible at <http://www.sgs.com/en/Terms-and-Conditions.aspx> and, for electronic format documents, subject to Terms and Conditions for Electronic Documents at <http://www.sgs.com/en/Terms-and-Conditions/Terms-e-Documents.aspx>. Attention is drawn to the limitation of liability, indemnification and jurisdiction issues defined therein. Any holder of this document is advised that information contained hereon reflects the Company's findings at the time of its intervention only and within the limits of Client's instructions, if any. The Company's sole responsibility is to its Client and this document does not exonerate parties to a transaction from exercising all their rights and obligations under the transaction documents. This document cannot be reproduced except in full, without prior written approval of the Company. Any unauthorized alteration, forgery or falsification of the content or appearance of this document is unlawful and offenders may be prosecuted to the fullest extent of the law. Unless otherwise stated the results shown in this test report refer only to the sample(s) tested and such sample(s) are retained for 30 days only.

Attention: To check the authenticity of testing / inspection report & certificate, please contact us at telephone:(86-755) 8307 1443, or email: CN.Doccheck@sgs.com

Room 101-501, Plant 4 & Room 101, Plant 2 & Room 101, Plant 3 & Room 301-501, Plant 3, Jianghao (Banian) Industrial Plant Area, No.430, Jihua Road, Banian Community, Banian Street, Longgang District, Shenzhen, Guangdong, China 518129 www.sgs.com.cn
 中国·广东·深圳市龙岗区坂田街道坂田社区吉华路430号江灏(坂田)工业厂区厂房4号101-901、2号101、3号301-501 邮编: 518129 t:(86-755) 25328888 sgs.china@sgs.com

EN71-12:2016-N-nitrosamines and N-nitrosatable substances

Test Method : With reference to EN71-12:2016, analysis was performed by LC-MS/MS.

<u>Test Item(s)</u>	<u>Limit</u>	<u>Unit</u>	<u>MDL</u>	<u>001</u>
N-Nitrosamines	0.010	mg/kg	0.010	ND
Comment				PASS
N-Nitrosatable substances	0.10	mg/kg	0.10	ND
Comment				PASS

Test Part Description :

Specimen No.	SGS Sample ID	Description
SN1	CAN23-055039.001	Dark green soft plastic (Foot)(G)

Remarks :

- (1) 1 mg/kg = 0.0001%
- (2) MDL = Method Detection Limit
- (3) ND = Not Detected (< MDL)
- (4) "-" = Not Regulated
- (5) The tests were conducted by SGS-CSTC Guangzhou Lab.

Notes :

N-Nitrosamines tested : N-nitrosodiethanolamine (NDELA), N-nitrosodimethylamine (NDMA), N-nitrosodiethylamine (NDEA), N-nitrosodipropylamine (NDPA), N-nitrosodibutylamine (NDBA), N-nitrosopiperidine (NPIP), N-nitrosomorpholine (NMOR), N-nitrosodibenzylamine (NDBZA), N-nitroso-N-methyl-N-phenylamine (NMPHA), N-nitroso-N-ethyl-N-phenylamine (NEPHA), N-nitrosodiisononylamine (NDiNA), N-nitrosodiisopropylamine (NDiPA) and N-Nitrosodiisobutylamine (NDiBA).

Unless otherwise stated, the decision rule for conformity reporting is based on Binary Statement for Simple Acceptance Rule (w =0) stated in ILAC-G8:09/2019.



