



BTL DIFFUSION

Technical Report: (9024)218-0336
Date Received: JUN 19, 2024

AUG 06, 2024
Page 1 of 90

BTL DIFFUSION
16, RUE ANATOLE MOUSSU - ZA MÉRÉ NORD EST 78490
MÉRÉ, FRANCE

Sample Description:	TRANQUIL PENGUIN/ TRANQUIL WHALE - BLUE(RECHARGEABLE)/ TRANQUIL WHALE - WHITE(RECHARGEABLE)		
Vendor:	N/A	Sample Size:	N/A
Buyer:	N/A	Style No(s):	9200-PG, 9100-WB, 9100-WD
Manufacturer:	N/A	SKN/SKU No.:	N/A
Labeled Age Grade:	0+	PO No.:	N/A
Appropriate Age Grade:	NOT REQUESTED	Ref #:	N/A
Client Specified Age	0+	Assortment No.:	N/A
Grade:			
Tested Age Grade:	0+	Country of Destination:	N/A
Country of Origin:	CHINA	Color:	N/A
UPC Code:	N/A		

EXECUTIVE SUMMARY:

The sample(s) MEET the following requirement(s):

- As specified by client, to determine the Migration of Certain Elements content in the submitted sample(s) in accordance with European Standard on Safety of Toys EN 71-3:2019+A1:2021.*
- As specified by client, to determine the Migration of Certain Elements content in the submitted sample(s) in accordance with British Standard on Safety of Toys BS EN 71-3:2019+A1:2021.*
- As specified by client, to determine the Heavy Elements content in the submitted sample(s) in accordance with ASTM F963-23 (Clause 4.3.5) Standard Consumer Safety Specification for Toy Safety.*
- As specified by client, to determine the Soluble Elements content in the submitted sample(s) in accordance with Australian/New Zealand Standard on Safety of Toys AS/NZS ISO 8124.3:2021.*
- As specified by client, to determine the Toxicological Hazards content in the submitted sample(s) in accordance with Canada Consumer Product Safety Act : Toys Regulations (SOR/2011-17 and amendment SOR/2016-195 & SOR/2016-302).*
- As specified by client, to determine the Lead content in the submitted sample(s) in accordance with Consumer Product Safety Improvement Act of 2008(H.R. 4040) & H.R.2715 amendment Title 1 section 101-Children's products containing lead; lead paint rule.*
- As specified by client, to determine the Lead content in the submitted sample(s) in accordance with California "Proposition 65".*
- As specified by client, to determine the Total Lead content in the submitted sample(s) in accordance with Canada Consumer Product Safety Act : Consumer Products Containing Lead Regulations SOR/2018-83. *

C/N QD/FIONA/AZ

Bureau Veritas Consumer Products Service (Shanghai) Co., Ltd. Qingdao Branch,
Floor 3, No. 3 Building, GND Tech Base, No.192 Zhuzhou Road, Lao Shan District, Qingdao
Code: 266101
Tel: 86-0532-58827999,
Fax: 86-0532-88706839
Email: bvcpsinfor.qd@cn.bureauveritas.com
Website: www.bureauveritas.com/cps

This report is governed by, and incorporates by reference, the Conditions of Testing as posted at the date of issuance of this report at <http://www.bureauveritas.com/home/about-us/our-business/cps/about-us/terms-conditions/> and is intended for your exclusive use. Any copying or replication of this report to or for any other person or entity, or use of our name or trademark, is permitted only with our prior written permission. This report sets forth our findings solely with respect to the test samples identified herein. The results set forth in this report are not indicative or representative of the quality or characteristics of the lot from which a test sample was taken or any similar or identical product unless specifically and expressly noted. Our report includes all of the tests requested by you and the results thereof based upon the information that you provided to us. Measurement uncertainty is only provided upon request for accredited tests. Statements of conformity are based on simple acceptance criteria without taking measurement uncertainty into account, unless otherwise requested in writing. You have 60 days from date of issuance of this report to notify us of any material error or omission caused by our negligence or if you require measurement uncertainty; provided, however, that such notice shall be in writing and shall specifically address the issue you wish to raise. A failure to raise such issue within the prescribed time shall constitute your unqualified acceptance of the completeness of this report, the tests conducted and the correctness of the report contents.



RESULT:

EXECUTIVE SUMMARY:

The sample(s) MEET the following requirement(s):

- As specified by client, to determine the Mercury content in the submitted sample(s) in accordance with Canadian Environmental Protection Act : Products Containing Mercury Regulations SOR/2014-254. *
- As specified by client, to determine the Cadmium content in the submitted sample(s) in accordance with Item 23 of Annex XVII of REACH Regulation (EC) 1907/2006. *
- As specified by client, to determine the PAHs content in the submitted sample(s) in accordance with Item 50 of Annex XVII of REACH Regulation (EC) 1907/2006 & amendment (EU) No 1272/2013. *
- As specified by client, to determine the Specific Migration of Bisphenol A (BPA) in the submitted sample(s) in accordance with Directive 2009/48/EC and its amendment Directive (EU) 2017/898. *
- As specified by client, to determine the DEHP , DBP , BBP , DINP , DIBP , DPENP , DHEXP and DCHP content in the submitted sample(s) in accordance with Consumer Product Safety Improvement Act of 2008(H.R. 4040) & H.R.2715 amendment &16 CFR Part 1307-Prohibition of Children Toys and Child Care Articles Containing Specified Phthalates. *
- As specified by client, to determine the DBP , BBP , DEHP , DIDP , DNHP and DINP content in the submitted sample(s) in accordance with California "Proposition 65". *
- As specified by client, to determine the DEHP , DBP , BBP , DIBP , DINP , DIDP and DNOP content In the submitted sample(s) in accordance with Item 51&52 of Annex XVII of REACH Regulation (EC) 1907/2006. *
- As specified by client, to determine the DEHP content in the submitted sample(s) in accordance with Australia Competition and Consumer Act 2010 in children's products - Consumer Protection Notice No. 11 of 2011. *
- As specified by client, to determine TCEP content in the submitted sample(s) in accordance with Canada Consumer Product Safety Act : Polyurethane foam Regulations SOR/2014-79. *
- As specified by client, to determine the Phthalates content in the submitted sample(s). *
- As specified by client, to determine the Short Chain Chlorinated Paraffin Content in the submitted sample(s) in accordance with the Persistent Organic Pollutants (POPs) Regulation (EU) 2019/1021. *
- As specified by client, to determine the Specific Migration of Phenol content in the submitted sample(s) in accordance with Directive 2009/48/EC and its amendment Directive (EU) 2017/774. *
- As specified by client, to determine TCEP, TCPP, TDCP content in the submitted sample(s) in accordance with Directive (EU) 2009/48/EC & its amendment Directive 2014/79/EU. *
- As specified by client, to determine the Benzene content in the submitted sample(s) in accordance with Item 72 of Annex XVII of REACH Regulation (EC) NO. 1907/2006 & amendment (EU) No 2018/1513. *
- As specified by client, to determine the Aniline content in the submitted sample(s) in accordance with Directive 2009/48/EC and its amendment Directive (EU) 2021/903. *
- As specified by client, to determine the Lead(Pb), Cadmium(Cd), Mercury(Hg), Hexavalent Chromium(Cr⁶⁺), Polybrominated Biphenyls(PBBs) & Polybrominated Diphenyl Ethers(PBDEs) content in the submitted sample(s) in accordance with Directive 2011/65/EU (RoHS) & its amendment Directive (EU) 2015/863. *



RESULT:

EXECUTIVE SUMMARY:

The sample(s) MEET the following requirement(s):

- As specified by client, to determine the Formaldehyde content in the submitted sample(s) in accordance with Directive 2009/48/EC & its amendment Directive (EU) 2019/1929. *
- As specified by client, to determine the Azocolourants content in the submitted sample(s) in accordance with Item 43 of Annex XVII of REACH Regulation (EC) NO. 1907/2006 & amendment No. 552/2009 and 126/2013. *
- As specified by client, to determine the Pentachlorophenol (PCP) content in the submitted sample(s) in accordance with the Persistent Organic Pollutants (POPs) Regulation (EU) 2019/1021 and its amendment Directive (EU) 2021/277. *
- As specified by client, to determine the Extractable heavy metal content in the submitted sample(s) in accordance with Item 72 of Annex XVII of REACH Regulation (EC) NO. 1907/2006 & amendment (EU) No 2018/1513. *
- As specified by client, to determine the Dibutyl Phthalate (DBP), Benzylbutyl Phthalate (BBP), Bis-(2-ethylhexyl)Phthalate (DEHP) and Diisobutyl Phthalate (DIBP) content in the submitted sample(s) in accordance with Directive 2011/65/EU (RoHS) & its amendment Directive (EU) 2015/863. *

Note:

1. With the client's prior consent, the * was subcontracted test item.
2. Total Lead content in the submitted sample(s) in accordance with Canada Surface coating materials regulations (SOR/2016-193&SOR/2022-122) was not applicable.
3. Total Lead content in the submitted sample(s) in accordance with 16 CFR 1303 was not applicable.
4. The DEHP, DBP, BBP, DINP, DIDP and DNOP content in the submitted sample(s) in accordance with Canada Consumer Product Safety Act : Phthalates Regulations (SOR/2016-188 were not Applicable.



BTL DIFFUSION
Technical Report: **(9024)218-0336**
AUG 06, 2024
Page 4 of 90

RESULT:

BVCPS (SHANGHAI)-QINGDAO BRANCH CONTACT INFORMATION FOR THIS REPORT

Technical enquiry:

Anderson Zhang 86-532-58827985 Anderson Zhang @cn.bureauveritas.com

General enquiry and invoicing:

Mandy Zhang 86-532-58827932 Mandy Zhang@cn.bureauveritas.com

**BUREAU VERITAS
CONSUMER PRODUCTS SERVICE DIVISION (SHANGHAI)-QINGDAO
BRANCH**

ANDERSON ZHANG
MANAGER- HARDLINE & TOY OPERATION



RESULT:

Specimen Description:

No.	Test part(s) name	
1	Transparent grey plastic, shell	A
2	Pale grey plastic, button	A
3	Black plastic, battery cover/slider	A/B/C
4	Black plastic, trick wheel	A/B/C
5	Translucent plastic, hook tape Velcro	A
6	Grey plush, body	A
7	Beige white flannel, body	A
8	Brown fabric, mouth/feet	A
9	White/dark blue/yellow green/grey white fabric, label	A/B/C
10	White/green fabric, label	A/B/C
11	White/black fabric, label	A/B/C
12	White fabric, belly	A
13	Black embroidery, eyes	A/B
14	White embroidery, eyes	A
15	Silvery metal, screw of battery cover	A/B/C
16	Black EVA with adhesive, pad/washer	A/B/C
17	White felt, interlining banding	A/B/C
18	White fiber, stuffing	A/B/C
19	Silvery metal, screw	A/B/C
20	Silvery metal, medium screw	A/B/C
21	Silvery metal, big screw	A/B/C
22	Translucent plastic, glue	A/B/C
23	Black plastic, frame	A
24	Pale grey plastic, frame	A
25	Transparent grey plastic, LED shade	A/B/C
26	Black plastic, holder of LED shade	A/B/C
27	Beige plastic, motor holder	A/B/C



HONGKONG HUAXING INDUSTRIAL CO., LIMITED

Technical Report: **(9024)218-0336**

AUG 06, 2024

Page 6 of 90

No.	Test part(s) name	
28	Silvery metal, screw of motor holder	A/B/C
29	Silvery metal, big shaft of motor	A/B/C
30	White plastic, gear of motor	A/B/C
31	Beige plastic, gear of motor	A/B/C
32	Light blue plastic, gear of motor	A/B/C
33	Silvery metal, shaft of gear, motor	A/B/C
34	Silvery metal, cover of motor	A/B/C
35	Dark grey plastic, magnet of motor	A/B/C
36	Coppery metal, bearing of motor	A/B/C
37	Silvery metal, shaft of motor	A/B/C
38	Blue plastic, washer of motor	A/B/C
39	White plastic, insulation sheet of motor	A/B/C
40	Silvery metal, sheet of motor	A/B/C
41	Coppery metal, coil of motor	A/B/C
42	Translucent plastic, commutator of motor	A/B/C
43	Black ceramic, core of commutator	A/B/C
44	Silvery solder, core of commutator	A/B/C
45	Silvery metal, bar of commutator	A/B/C
46	Grey paper, washer of commutator	A/B/C
47	Silvery metal, cap of motor	A/B/C
48	Translucent plastic, cap of motor	A/B/C
49	Silvery metal, brush of motor	A/B/C
50	Silvery metal, connector of motor	A/B/C
51	Silvery solder, connector of motor	A/B/C
52	Black soft plastic, wire jacket of motor	A/B/C
53	Red soft plastic, wire jacket of motor	A/B/C
54	Coppery metal, wire of motor	A/B/C
55	Silvery metal, cover of speaker	A/B/C
56	Black plastic, ring of speaker	A/B/C



HONGKONG HUAXING INDUSTRIAL CO., LIMITED

Technical Report: **(9024)218-0336**

AUG 06, 2024

Page 7 of 90

No.	Test part(s) name	
57	Black plastic with glue, diaphragm of speaker	A/B/C
58	Coppery metal, coil of speaker	A/B/C
59	Silvery metal, plate of speaker	A/B/C
60	Silvery metal, magnet of speaker	A/B/C
61	Green coated brown plastic with coppery metal, PCB of speaker	A/B/C
62	Silvery solder, PCB of speaker	A/B/C
63	White soft plastic, wire jacket of speaker and MIC	A/B/C
64	Coppery metal, wire core of speaker and MIC	A/B/C
65	Red soft plastic, wire jacket of MIC	A/B/C
66	Black fabric with adhesive, dust gauze of MIC	A/B/C
67	Silvery metal, cover of MIC	A/B/C
68	White plastic, inner cover of MIC	A/B/C
69	White plastic, ring of MIC	A/B/C
70	Silvery metal, ring of MIC	A/B/C
71	Silvery plastic, film of MIC	A/B/C
72	Silvery metal, plate of MIC	A/B/C
73	Black body, transistor of MIC	A/B/C
74	Green coated brown plastic with coppery metal, PCB of MIC	A/B/C
75	Silvery solder, PCB of MIC	A/B/C
76	Transparent body, LED of LED PCB	A/B/C
77	White / green coated brown plastic with coppery metal, LED PCB	A/B/C
78	Silvery solder, LED PCB	A/B/C
79	White soft plastic, wire jacket of LED PCB	A/B/C
80	Red soft plastic, wire jacket of LED PCB	A/B/C
81	Coppery metal, wire core of LED PCB	A/B/C
82	Translucent / black soft plastic, button of button PCB	A/B/C
83	White printed green coated brown plastic with coppery metal, button PCB	A/B/C
84	Silvery solder, button PCB	A/B/C
85	Black soft plastic, wire jacket of flat cable	A/B/C



HONGKONG HUAXING INDUSTRIAL CO., LIMITED

Technical Report: **(9024)218-0336**

AUG 06, 2024

Page 8 of 90

No.	Test part(s) name	
86	Red soft plastic, wire jacket of flat cable	A/B/C
87	Coppery metal, wire core of flat cable	A/B/C
88	Translucent body, LED of switch PCB	A/B/C
89	Silvery metal, pin of LED, switch PCB	A/B/C
90	Translucent plastic, pin holder of LED, switch PCB	A/B/C
91	Silvery metal, cover of socket, switch PCB	A/B/C
92	Black plastic, pin holder of socket, switch PCB	A/B/C
93	Silvery metal, pin of socket, switch PCB	A/B/C
94	Black plastic, slide of switch, switch PCB	A/B/C
95	Silvery metal, cover of switch, switch PCB	A/B/C
96	Silvery metal, contact plate of switch, switch PCB	A/B/C
97	Silvery metal, clip of switch, switch PCB	A/B/C
98	Brown plastic, board of switch, switch PCB	A/B/C
99	Silvery metal, pin of switch, switch PCB	A/B/C
100	Black body, SMD transistor of switch PCB & main PCB	A/B/C
101	Black body, SMD diode of switch PCB	A/B/C
102	Black / white body, SMD resistor of switch PCB & main PCB	A/B/C
103	White printed green coated brown plastic with coppery metal, switch PCB	A/B/C
104	Silvery solder, switch PCB	A/B/C
105	Black body, big IC of main PCB	A/B/C
106	Black body, small IC of main PCB	A/B/C
107	Brown body, SMD capacitor of main PCB	A/B/C
108	White printed green coated brown plastic with coppery metal, main PCB	A/B/C
109	Silvery solder, main PCB	A/B/C
110	Silvery metal, contact plate of trick wheel	A/B/C
111	Green / black coated translucent plastic with coppery metal, volume PCB	A/B/C
112	Silvery metal, contact plate of volume PCB	A/B/C
113	Green coated brown plastic with coppery metal, volume PCB	A/B/C
114	Silvery solder, volume PCB	A/B/C



HONGKONG HUAXING INDUSTRIAL CO., LIMITED

Technical Report: **(9024)218-0336**

AUG 06, 2024

Page 9 of 90

No.	Test part(s) name	
115	Black plastic, sleeve of connector	A/B/C
116	White plastic, connector	A/B/C
117	Silvery metal, connector pin	A/B/C
118	Black soft plastic, connecting line	A/B/C
119	Red soft plastic, connecting line	A/B/C
120	Coppery metal, wire	A/B/C
121	Black printed blue plastic, sleeve of battery	A/B/C
122	Green paper with adhesive, insulator of battery	A/B/C
123	Black plastic, sleeve of battery	A/B/C
124	Silvery metal, contact plate of battery	A/B/C
125	Black body, IC of battery PCB	A/B/C
126	Black body, SMD diode of battery PCB	A/B/C
127	Black / white body, SMD resistor of battery PCB	A/B/C
128	Brown body, SMD capacitor of battery PCB	A/B/C
129	White printed brown plastic with coppery metal, battery PCB	A/B/C
130	Silvery solder, battery PCB	A/B/C
131	White plastic, plug of battery	A/B/C
132	Silvery metal, terminal of plug, battery	A/B/C
133	Black soft plastic, wire jacket of battery	A/B/C
134	Red soft plastic, wire jacket of battery	A/B/C
135	Silvery metal, wire of battery	A/B/C
136	Beige foam with adhesive, interlining of belly	A/B/C
137	Transparent blue plastic, shell	B
138	Blue plastic, button	B
139	Translucent light green plastic, hook tape Velcro	B
140	Dark blue flannel, body	B
141	Pale green fabric, body	B
142	Light green fabric, belly	B
143	Orange embroidery, ears	B



HONGKONG HUAXING INDUSTRIAL CO., LIMITED

Technical Report: **(9024)218-0336**

AUG 06, 2024

Page 10 of 90

No.	Test part(s) name	
144	Blue plastic, frame	B
145	Transparent blue plastic, LED shade	B
146	White EVA with adhesive, pad of LED shade	B/C
147	Transparent plastic, shell	C
148	Light pink plastic, button	C
149	Translucent white plastic, hook tape Velcro	C
150	Beige white plush, body	C
151	Beige white fabric, body	C
152	Beige fabric, belly	C
153	Brown embroidery, ears	C
154	Pink embroidery, ears	C
155	Light pink plastic, frame	C
156	Transparent plastic, LED shade	C

Remark: A: Sea turtle ; B: Blue cetacean ; C: White cetacean



Results:

(1) Migration of Certain Elements- EN 71-3:2019+A1:2021

Test Method: EN 71-3:2019+A1:2021

Test Instrument: Inductively Coupled Plasma Optical Emission Spectrometer (ICP-OES)
 Inductively Coupled Plasma Mass Spectrometer (ICP-MS)
 Liquid Chromatography-Inductively Coupled Plasma Mass Spectrometer (LC-ICP-MS)

Test item(s)	Unit	MDL	Limit (mg/kg)			Result(s)		
			Category 1: dry, brittle, powder-like, or pliable materials	Category 2: liquid, or sticky materials	Category 3: scraped-off materials	1	2	3
Al	mg/kg	2	2250	560	28130	N.D.	N.D.	N.D.
Sb	mg/kg	2	45	11.3	560	N.D.	N.D.	N.D.
As	mg/kg	0.5	3.8	0.9	47	N.D.	N.D.	N.D.
Ba	mg/kg	2	1500	375	18750	N.D.	N.D.	N.D.
B	mg/kg	2	1200	300	15000	N.D.	N.D.	N.D.
Cd	mg/kg	0.2	1.3	0.3	17	N.D.	N.D.	N.D.
Cr III	mg/kg	2	37.5	9.4	460	N.D.	N.D.	N.D.
Cr VI	mg/kg	0.015	0.02	0.005	0.053	N.D.	N.D.	N.D.
Co	mg/kg	2	10.5	2.6	130	N.D.	N.D.	N.D.
Cu	mg/kg	2	622.5	156	7700	N.D.	N.D.	N.D.
Pb	mg/kg	0.2	2.0	0.5	23	N.D.	N.D.	N.D.
Mn	mg/kg	2	1200	300	15000	N.D.	N.D.	N.D.
Hg	mg/kg	1	7.5	1.9	94	N.D.	N.D.	N.D.
Ni	mg/kg	2	75	18.8	930	N.D.	N.D.	N.D.
Se	mg/kg	2	37.5	9.4	460	N.D.	N.D.	N.D.
Sr	mg/kg	2	4500	1125	56000	N.D.	N.D.	N.D.
Sn	mg/kg	0.2	15000	3750	180000	N.D.	N.D.	N.D.
Organic tin	mg/kg	0.2	0.9	0.2	12	N.D.	N.D.	N.D.
Zn	mg/kg	2	3750	938	46000	N.D.	N.D.	N.D.

Test item(s)	Unit	MDL	Limit (mg/kg)			Result(s)		
--------------	------	-----	---------------	--	--	-----------	--	--



HONGKONG HUAXING INDUSTRIAL CO., LIMITED

Technical Report: **(9024)218-0336**

AUG 06, 2024

Page 12 of 90

			Category 1: dry, brittle, powder-like, or pliable materials	Category 2: liquid, or sticky materials	Category 3: scraped-off materials	4	5	6
Al	mg/kg	2	2250	560	28130	N.D.	N.D.	N.D.
Sb	mg/kg	2	45	11.3	560	N.D.	N.D.	N.D.
As	mg/kg	0.5	3.8	0.9	47	N.D.	N.D.	N.D.
Ba	mg/kg	2	1500	375	18750	N.D.	N.D.	N.D.
B	mg/kg	2	1200	300	15000	N.D.	N.D.	N.D.
Cd	mg/kg	0.2	1.3	0.3	17	N.D.	N.D.	N.D.
Cr III	mg/kg	2	37.5	9.4	460	N.D.	N.D.	N.D.
Cr VI	mg/kg	0.015	0.02	0.005	0.053	N.D.	N.D.	N.D.
Co	mg/kg	2	10.5	2.6	130	N.D.	N.D.	N.D.
Cu	mg/kg	2	622.5	156	7700	N.D.	N.D.	N.D.
Pb	mg/kg	0.2	2.0	0.5	23	N.D.	N.D.	N.D.
Mn	mg/kg	2	1200	300	15000	N.D.	N.D.	N.D.
Hg	mg/kg	1	7.5	1.9	94	N.D.	N.D.	N.D.
Ni	mg/kg	2	75	18.8	930	N.D.	N.D.	N.D.
Se	mg/kg	2	37.5	9.4	460	N.D.	N.D.	N.D.
Sr	mg/kg	2	4500	1125	56000	N.D.	N.D.	N.D.
Sn	mg/kg	0.2	15000	3750	180000	N.D.	N.D.	N.D.
Organic tin	mg/kg	0.2	0.9	0.2	12	N.D.	N.D.	N.D.
Zn	mg/kg	2	3750	938	46000	N.D.	N.D.	N.D.

Test item(s)	Unit	MDL	Limit (mg/kg)	Result(s)
--------------	------	-----	---------------	-----------



HONGKONG HUAXING INDUSTRIAL CO., LIMITED

Technical Report: **(9024)218-0336**

AUG 06, 2024

Page 13 of 90

			Category 1: dry, brittle, powder-like, or pliable materials	Category 2: liquid, or sticky materials	Category 3: scraped-off materials	7	8	9
Al	mg/kg	2	2250	560	28130	N.D.	N.D.	N.D.
Sb	mg/kg	2	45	11.3	560	N.D.	N.D.	N.D.
As	mg/kg	0.5	3.8	0.9	47	N.D.	N.D.	N.D.
Ba	mg/kg	2	1500	375	18750	N.D.	N.D.	N.D.
B	mg/kg	2	1200	300	15000	N.D.	N.D.	N.D.
Cd	mg/kg	0.2	1.3	0.3	17	N.D.	N.D.	N.D.
Cr III	mg/kg	2	37.5	9.4	460	N.D.	N.D.	N.D.
Cr VI	mg/kg	0.015	0.02	0.005	0.053	N.D.	N.D.	N.D.
Co	mg/kg	2	10.5	2.6	130	N.D.	N.D.	N.D.
Cu	mg/kg	2	622.5	156	7700	N.D.	N.D.	N.D.
Pb	mg/kg	0.2	2.0	0.5	23	N.D.	N.D.	N.D.
Mn	mg/kg	2	1200	300	15000	N.D.	N.D.	N.D.
Hg	mg/kg	1	7.5	1.9	94	N.D.	N.D.	N.D.
Ni	mg/kg	2	75	18.8	930	N.D.	N.D.	N.D.
Se	mg/kg	2	37.5	9.4	460	N.D.	N.D.	N.D.
Sr	mg/kg	2	4500	1125	56000	N.D.	N.D.	N.D.
Sn	mg/kg	0.2	15000	3750	180000	N.D.	N.D.	N.D.
Organic tin	mg/kg	0.2	0.9	0.2	12	N.D.	N.D.	N.D.
Zn	mg/kg	2	3750	938	46000	N.D.	N.D.	N.D.



HONGKONG HUAXING INDUSTRIAL CO.,LIMITED

Technical Report: **(9024)218-0336**

AUG 06, 2024

Page 14 of 90

Test item(s)	Unit	MDL	Limit (mg/kg)			Result(s)		
			Category 1: dry, brittle, powder-like, or pliable materials	Category 2: liquid, or sticky materials	Category 3: scraped-off materials	137	138	139
Al	mg/kg	2	2250	560	28130	N.D.	N.D.	N.D.
Sb	mg/kg	2	45	11.3	560	N.D.	N.D.	N.D.
As	mg/kg	0.5	3.8	0.9	47	N.D.	N.D.	N.D.
Ba	mg/kg	2	1500	375	18750	N.D.	N.D.	N.D.
B	mg/kg	2	1200	300	15000	N.D.	N.D.	N.D.
Cd	mg/kg	0.2	1.3	0.3	17	N.D.	N.D.	N.D.
Cr III	mg/kg	2	37.5	9.4	460	N.D.	N.D.	N.D.
Cr VI	mg/kg	0.015	0.02	0.005	0.053	N.D.	N.D.	N.D.
Co	mg/kg	2	10.5	2.6	130	N.D.	N.D.	N.D.
Cu	mg/kg	2	622.5	156	7700	N.D.	N.D.	N.D.
Pb	mg/kg	0.2	2.0	0.5	23	N.D.	N.D.	N.D.
Mn	mg/kg	2	1200	300	15000	N.D.	N.D.	N.D.
Hg	mg/kg	1	7.5	1.9	94	N.D.	N.D.	N.D.
Ni	mg/kg	2	75	18.8	930	N.D.	N.D.	N.D.
Se	mg/kg	2	37.5	9.4	460	N.D.	N.D.	N.D.
Sr	mg/kg	2	4500	1125	56000	N.D.	N.D.	N.D.
Sn	mg/kg	0.2	15000	3750	180000	N.D.	N.D.	N.D.
Organic tin	mg/kg	0.2	0.9	0.2	12	N.D.	N.D.	N.D.
Zn	mg/kg	2	3750	938	46000	N.D.	N.D.	N.D.



HONGKONG HUAXING INDUSTRIAL CO.,LIMITED

Technical Report: **(9024)218-0336**

AUG 06, 2024

Page 15 of 90

Test item(s)	Unit	MDL	Limit (mg/kg)			Result(s)		
			Category 1: dry, brittle, powder-like, or pliable materials	Category 2: liquid, or sticky materials	Category 3: scraped-off materials	140	141	142
Al	mg/kg	2	2250	560	28130	N.D.	N.D.	N.D.
Sb	mg/kg	2	45	11.3	560	N.D.	N.D.	N.D.
As	mg/kg	0.5	3.8	0.9	47	N.D.	N.D.	N.D.
Ba	mg/kg	2	1500	375	18750	N.D.	N.D.	N.D.
B	mg/kg	2	1200	300	15000	N.D.	N.D.	N.D.
Cd	mg/kg	0.2	1.3	0.3	17	N.D.	N.D.	N.D.
Cr III	mg/kg	2	37.5	9.4	460	N.D.	N.D.	N.D.
Cr VI	mg/kg	0.015	0.02	0.005	0.053	N.D.	N.D.	N.D.
Co	mg/kg	2	10.5	2.6	130	N.D.	N.D.	N.D.
Cu	mg/kg	2	622.5	156	7700	N.D.	N.D.	N.D.
Pb	mg/kg	0.2	2.0	0.5	23	N.D.	N.D.	N.D.
Mn	mg/kg	2	1200	300	15000	N.D.	N.D.	N.D.
Hg	mg/kg	1	7.5	1.9	94	N.D.	N.D.	N.D.
Ni	mg/kg	2	75	18.8	930	N.D.	N.D.	N.D.
Se	mg/kg	2	37.5	9.4	460	N.D.	N.D.	N.D.
Sr	mg/kg	2	4500	1125	56000	N.D.	N.D.	N.D.
Sn	mg/kg	0.2	15000	3750	180000	N.D.	N.D.	N.D.
Organic tin	mg/kg	0.2	0.9	0.2	12	N.D.	N.D.	N.D.
Zn	mg/kg	2	3750	938	46000	N.D.	N.D.	N.D.



HONGKONG HUAXING INDUSTRIAL CO.,LIMITED

Technical Report: **(9024)218-0336**

AUG 06, 2024

Page 16 of 90

Test item(s)	Unit	MDL	Limit (mg/kg)			Result(s)		
			Category 1: dry, brittle, powder-like, or pliable materials	Category 2: liquid, or sticky materials	Category 3: scraped-off materials	143	147	148
Al	mg/kg	2	2250	560	28130	N.D.	N.D.	N.D.
Sb	mg/kg	2	45	11.3	560	N.D.	N.D.	N.D.
As	mg/kg	0.5	3.8	0.9	47	N.D.	N.D.	N.D.
Ba	mg/kg	2	1500	375	18750	N.D.	N.D.	N.D.
B	mg/kg	2	1200	300	15000	N.D.	N.D.	N.D.
Cd	mg/kg	0.2	1.3	0.3	17	N.D.	N.D.	N.D.
Cr III	mg/kg	2	37.5	9.4	460	N.D.	N.D.	N.D.
Cr VI	mg/kg	0.015	0.02	0.005	0.053	N.D.	N.D.	N.D.
Co	mg/kg	2	10.5	2.6	130	N.D.	N.D.	N.D.
Cu	mg/kg	2	622.5	156	7700	N.D.	N.D.	N.D.
Pb	mg/kg	0.2	2.0	0.5	23	N.D.	N.D.	N.D.
Mn	mg/kg	2	1200	300	15000	N.D.	N.D.	N.D.
Hg	mg/kg	1	7.5	1.9	94	N.D.	N.D.	N.D.
Ni	mg/kg	2	75	18.8	930	N.D.	N.D.	N.D.
Se	mg/kg	2	37.5	9.4	460	N.D.	N.D.	N.D.
Sr	mg/kg	2	4500	1125	56000	N.D.	N.D.	N.D.
Sn	mg/kg	0.2	15000	3750	180000	N.D.	N.D.	N.D.
Organic tin	mg/kg	0.2	0.9	0.2	12	N.D.	N.D.	N.D.
Zn	mg/kg	2	3750	938	46000	N.D.	N.D.	N.D.



HONGKONG HUAXING INDUSTRIAL CO.,LIMITED

Technical Report: **(9024)218-0336**

AUG 06, 2024

Page 17 of 90

Test item(s)	Unit	MDL	Limit (mg/kg)			Result(s)		
			Category 1: dry, brittle, powder-like, or pliable materials	Category 2: liquid, or sticky materials	Category 3: scraped-off materials	149	150	151
Al	mg/kg	2	2250	560	28130	N.D.	N.D.	N.D.
Sb	mg/kg	2	45	11.3	560	N.D.	N.D.	N.D.
As	mg/kg	0.5	3.8	0.9	47	N.D.	N.D.	N.D.
Ba	mg/kg	2	1500	375	18750	N.D.	N.D.	N.D.
B	mg/kg	2	1200	300	15000	N.D.	N.D.	N.D.
Cd	mg/kg	0.2	1.3	0.3	17	N.D.	N.D.	N.D.
Cr III	mg/kg	2	37.5	9.4	460	N.D.	N.D.	N.D.
Cr VI	mg/kg	0.015	0.02	0.005	0.053	N.D.	N.D.	N.D.
Co	mg/kg	2	10.5	2.6	130	N.D.	N.D.	N.D.
Cu	mg/kg	2	622.5	156	7700	N.D.	N.D.	N.D.
Pb	mg/kg	0.2	2.0	0.5	23	N.D.	N.D.	N.D.
Mn	mg/kg	2	1200	300	15000	N.D.	N.D.	N.D.
Hg	mg/kg	1	7.5	1.9	94	N.D.	N.D.	N.D.
Ni	mg/kg	2	75	18.8	930	N.D.	N.D.	N.D.
Se	mg/kg	2	37.5	9.4	460	N.D.	N.D.	N.D.
Sr	mg/kg	2	4500	1125	56000	N.D.	N.D.	N.D.
Sn	mg/kg	0.2	15000	3750	180000	N.D.	N.D.	N.D.
Organic tin	mg/kg	0.2	0.9	0.2	12	N.D.	N.D.	N.D.
Zn	mg/kg	2	3750	938	46000	N.D.	N.D.	N.D.



HONGKONG HUAXING INDUSTRIAL CO.,LIMITED

Technical Report: **(9024)218-0336**

AUG 06, 2024

Page 18 of 90

Test item(s)	Unit	MDL	Limit (mg/kg)			Result(s)		
			Category 1: dry, brittle, powder-like, or pliable materials	Category 2: liquid, or sticky materials	Category 3: scraped-off materials	152	153	154
Al	mg/kg	2	2250	560	28130	N.D.	N.D.	N.D.
Sb	mg/kg	2	45	11.3	560	N.D.	N.D.	N.D.
As	mg/kg	0.5	3.8	0.9	47	N.D.	N.D.	N.D.
Ba	mg/kg	2	1500	375	18750	N.D.	N.D.	N.D.
B	mg/kg	2	1200	300	15000	N.D.	N.D.	N.D.
Cd	mg/kg	0.2	1.3	0.3	17	N.D.	N.D.	N.D.
Cr III	mg/kg	2	37.5	9.4	460	N.D.	N.D.	N.D.
Cr VI	mg/kg	0.015	0.02	0.005	0.053	N.D.	N.D.	N.D.
Co	mg/kg	2	10.5	2.6	130	N.D.	N.D.	N.D.
Cu	mg/kg	2	622.5	156	7700	N.D.	N.D.	N.D.
Pb	mg/kg	0.2	2.0	0.5	23	N.D.	N.D.	N.D.
Mn	mg/kg	2	1200	300	15000	N.D.	N.D.	N.D.
Hg	mg/kg	1	7.5	1.9	94	N.D.	N.D.	N.D.
Ni	mg/kg	2	75	18.8	930	N.D.	N.D.	N.D.
Se	mg/kg	2	37.5	9.4	460	N.D.	N.D.	N.D.
Sr	mg/kg	2	4500	1125	56000	N.D.	N.D.	N.D.
Sn	mg/kg	0.2	15000	3750	180000	N.D.	N.D.	N.D.
Organic tin	mg/kg	0.2	0.9	0.2	12	N.D.	N.D.	N.D.
Zn	mg/kg	2	3750	938	46000	N.D.	N.D.	N.D.

-The Migration content limit is Category 3.

Remark :

1. The migration of organic tin is expressed as Tributyltin(TBT).
2. Confirmation test of soluble chromium (III) & chromium (VI) is not required in case of soluble chromium does not exceed their requirements as specified in EN 71-3:2019+A1:2021.
3. Confirmation test of soluble organic tin is not required in case of soluble tin, after conversion, does not exceed the soluble organic tin requirement as specified in EN 71-3:2019+A1:2021.

(2) Migration of Certain Elements- BS EN 71-3:2019+A1:2021



HONGKONG HUAXING INDUSTRIAL CO.,LIMITED

Technical Report: **(9024)218-0336**

AUG 06, 2024

Page 19 of 90

Test Method: BS EN 71-3:2019+A1:2021

Test Instrument: Inductively Coupled Plasma Optical Emission Spectrometer (ICP-OES),
Inductively Coupled Plasma Mass Spectrometer (ICP-MS)
Liquid Chromatography-Inductively Coupled Plasma Mass Spectrometer (LC-ICP-MS)

Test item(s)	Unit	MDL	Limit (mg/kg)			Result(s)		
			Category1: dry, brittle, powder-like, or pliable materials	Category 2: liquid, or sticky materials	Category 3: scraped-off materials	1	2	3
Al	mg/kg	2	2250	560	28130	N.D.	N.D.	N.D.
Sb	mg/kg	2	45	11.3	560	N.D.	N.D.	N.D.
As	mg/kg	0.5	3.8	0.9	47	N.D.	N.D.	N.D.
Ba	mg/kg	2	1500	375	18750	N.D.	N.D.	N.D.
B	mg/kg	2	1200	300	15000	N.D.	N.D.	N.D.
Cd	mg/kg	0.2	1.3	0.3	17	N.D.	N.D.	N.D.
Cr III	mg/kg	2	37.5	9.4	460	N.D.	N.D.	N.D.
Cr VI	mg/kg	0.015	0.02	0.005	0.053	N.D.	N.D.	N.D.
Co	mg/kg	2	10.5	2.6	130	N.D.	N.D.	N.D.
Cu	mg/kg	2	622.5	156	7700	N.D.	N.D.	N.D.
Pb	mg/kg	0.2	2.0	0.5	23	N.D.	N.D.	N.D.
Mn	mg/kg	2	1200	300	15000	N.D.	N.D.	N.D.
Hg	mg/kg	1	7.5	1.9	94	N.D.	N.D.	N.D.
Ni	mg/kg	2	75	18.8	930	N.D.	N.D.	N.D.
Se	mg/kg	2	37.5	9.4	460	N.D.	N.D.	N.D.
Sr	mg/kg	2	4500	1125	56000	N.D.	N.D.	N.D.
Sn	mg/kg	0.2	15000	3750	180000	N.D.	N.D.	N.D.
Organic tin	mg/kg	0.2	0.9	0.2	12	N.D.	N.D.	N.D.
Zn	mg/kg	2	3750	938	46000	N.D.	N.D.	N.D.

Test item(s)	Unit	MDL	Limit (mg/kg)	Result(s)
--------------	------	-----	---------------	-----------



HONGKONG HUAXING INDUSTRIAL CO., LIMITED

Technical Report: **(9024)218-0336**

AUG 06, 2024

Page 20 of 90

			Category 1: dry, brittle, powder-like, or pliable materials	Category 2: liquid, or sticky materials	Category 3: scraped-off materials	4	5	6
Al	mg/kg	2	2250	560	28130	N.D.	N.D.	N.D.
Sb	mg/kg	2	45	11.3	560	N.D.	N.D.	N.D.
As	mg/kg	0.5	3.8	0.9	47	N.D.	N.D.	N.D.
Ba	mg/kg	2	1500	375	18750	N.D.	N.D.	N.D.
B	mg/kg	2	1200	300	15000	N.D.	N.D.	N.D.
Cd	mg/kg	0.2	1.3	0.3	17	N.D.	N.D.	N.D.
Cr III	mg/kg	2	37.5	9.4	460	N.D.	N.D.	N.D.
Cr VI	mg/kg	0.015	0.02	0.005	0.053	N.D.	N.D.	N.D.
Co	mg/kg	2	10.5	2.6	130	N.D.	N.D.	N.D.
Cu	mg/kg	2	622.5	156	7700	N.D.	N.D.	N.D.
Pb	mg/kg	0.2	2.0	0.5	23	N.D.	N.D.	N.D.
Mn	mg/kg	2	1200	300	15000	N.D.	N.D.	N.D.
Hg	mg/kg	1	7.5	1.9	94	N.D.	N.D.	N.D.
Ni	mg/kg	2	75	18.8	930	N.D.	N.D.	N.D.
Se	mg/kg	2	37.5	9.4	460	N.D.	N.D.	N.D.
Sr	mg/kg	2	4500	1125	56000	N.D.	N.D.	N.D.
Sn	mg/kg	0.2	15000	3750	180000	N.D.	N.D.	N.D.
Organic tin	mg/kg	0.2	0.9	0.2	12	N.D.	N.D.	N.D.
Zn	mg/kg	2	3750	938	46000	N.D.	N.D.	N.D.

Test item(s)	Unit	MDL	Limit (mg/kg)	Result(s)
--------------	------	-----	---------------	-----------



HONGKONG HUAXING INDUSTRIAL CO., LIMITED

Technical Report: **(9024)218-0336**

AUG 06, 2024

Page 21 of 90

			Category 1: dry, brittle, powder-like, or pliable materials	Category 2: liquid, or sticky materials	Category 3: scraped-off materials	7	8	9
Al	mg/kg	2	2250	560	28130	N.D.	N.D.	N.D.
Sb	mg/kg	2	45	11.3	560	N.D.	N.D.	N.D.
As	mg/kg	0.5	3.8	0.9	47	N.D.	N.D.	N.D.
Ba	mg/kg	2	1500	375	18750	N.D.	N.D.	N.D.
B	mg/kg	2	1200	300	15000	N.D.	N.D.	N.D.
Cd	mg/kg	0.2	1.3	0.3	17	N.D.	N.D.	N.D.
Cr III	mg/kg	2	37.5	9.4	460	N.D.	N.D.	N.D.
Cr VI	mg/kg	0.015	0.02	0.005	0.053	N.D.	N.D.	N.D.
Co	mg/kg	2	10.5	2.6	130	N.D.	N.D.	N.D.
Cu	mg/kg	2	622.5	156	7700	N.D.	N.D.	N.D.
Pb	mg/kg	0.2	2.0	0.5	23	N.D.	N.D.	N.D.
Mn	mg/kg	2	1200	300	15000	N.D.	N.D.	N.D.
Hg	mg/kg	1	7.5	1.9	94	N.D.	N.D.	N.D.
Ni	mg/kg	2	75	18.8	930	N.D.	N.D.	N.D.
Se	mg/kg	2	37.5	9.4	460	N.D.	N.D.	N.D.
Sr	mg/kg	2	4500	1125	56000	N.D.	N.D.	N.D.
Sn	mg/kg	0.2	15000	3750	180000	N.D.	N.D.	N.D.
Organic tin	mg/kg	0.2	0.9	0.2	12	N.D.	N.D.	N.D.
Zn	mg/kg	2	3750	938	46000	N.D.	N.D.	N.D.



HONGKONG HUAXING INDUSTRIAL CO.,LIMITED

Technical Report: **(9024)218-0336**

AUG 06, 2024

Page 22 of 90

Test item(s)	Unit	MDL	Limit (mg/kg)			Result(s)		
			Category 1: dry, brittle, powder-like, or pliable materials	Category 2: liquid, or sticky materials	Category 3: scraped-off materials	137	138	139
Al	mg/kg	2	2250	560	28130	N.D.	N.D.	N.D.
Sb	mg/kg	2	45	11.3	560	N.D.	N.D.	N.D.
As	mg/kg	0.5	3.8	0.9	47	N.D.	N.D.	N.D.
Ba	mg/kg	2	1500	375	18750	N.D.	N.D.	N.D.
B	mg/kg	2	1200	300	15000	N.D.	N.D.	N.D.
Cd	mg/kg	0.2	1.3	0.3	17	N.D.	N.D.	N.D.
Cr III	mg/kg	2	37.5	9.4	460	N.D.	N.D.	N.D.
Cr VI	mg/kg	0.015	0.02	0.005	0.053	N.D.	N.D.	N.D.
Co	mg/kg	2	10.5	2.6	130	N.D.	N.D.	N.D.
Cu	mg/kg	2	622.5	156	7700	N.D.	N.D.	N.D.
Pb	mg/kg	0.2	2.0	0.5	23	N.D.	N.D.	N.D.
Mn	mg/kg	2	1200	300	15000	N.D.	N.D.	N.D.
Hg	mg/kg	1	7.5	1.9	94	N.D.	N.D.	N.D.
Ni	mg/kg	2	75	18.8	930	N.D.	N.D.	N.D.
Se	mg/kg	2	37.5	9.4	460	N.D.	N.D.	N.D.
Sr	mg/kg	2	4500	1125	56000	N.D.	N.D.	N.D.
Sn	mg/kg	0.2	15000	3750	180000	N.D.	N.D.	N.D.
Organic tin	mg/kg	0.2	0.9	0.2	12	N.D.	N.D.	N.D.
Zn	mg/kg	2	3750	938	46000	N.D.	N.D.	N.D.



HONGKONG HUAXING INDUSTRIAL CO.,LIMITED

Technical Report: **(9024)218-0336**

AUG 06, 2024

Page 23 of 90

Test item(s)	Unit	MDL	Limit (mg/kg)			Result(s)		
			Category 1: dry, brittle, powder-like, or pliable materials	Category 2: liquid, or sticky materials	Category 3: scraped-off materials	140	141	142
Al	mg/kg	2	2250	560	28130	N.D.	N.D.	N.D.
Sb	mg/kg	2	45	11.3	560	N.D.	N.D.	N.D.
As	mg/kg	0.5	3.8	0.9	47	N.D.	N.D.	N.D.
Ba	mg/kg	2	1500	375	18750	N.D.	N.D.	N.D.
B	mg/kg	2	1200	300	15000	N.D.	N.D.	N.D.
Cd	mg/kg	0.2	1.3	0.3	17	N.D.	N.D.	N.D.
Cr III	mg/kg	2	37.5	9.4	460	N.D.	N.D.	N.D.
Cr VI	mg/kg	0.015	0.02	0.005	0.053	N.D.	N.D.	N.D.
Co	mg/kg	2	10.5	2.6	130	N.D.	N.D.	N.D.
Cu	mg/kg	2	622.5	156	7700	N.D.	N.D.	N.D.
Pb	mg/kg	0.2	2.0	0.5	23	N.D.	N.D.	N.D.
Mn	mg/kg	2	1200	300	15000	N.D.	N.D.	N.D.
Hg	mg/kg	1	7.5	1.9	94	N.D.	N.D.	N.D.
Ni	mg/kg	2	75	18.8	930	N.D.	N.D.	N.D.
Se	mg/kg	2	37.5	9.4	460	N.D.	N.D.	N.D.
Sr	mg/kg	2	4500	1125	56000	N.D.	N.D.	N.D.
Sn	mg/kg	0.2	15000	3750	180000	N.D.	N.D.	N.D.
Organic tin	mg/kg	0.2	0.9	0.2	12	N.D.	N.D.	N.D.
Zn	mg/kg	2	3750	938	46000	N.D.	N.D.	N.D.



HONGKONG HUAXING INDUSTRIAL CO.,LIMITED

Technical Report: **(9024)218-0336**

AUG 06, 2024

Page 24 of 90

Test item(s)	Unit	MDL	Limit (mg/kg)			Result(s)		
			Category 1: dry, brittle, powder-like, or pliable materials	Category 2: liquid, or sticky materials	Category 3: scraped-off materials	143	147	148
Al	mg/kg	2	2250	560	28130	N.D.	N.D.	N.D.
Sb	mg/kg	2	45	11.3	560	N.D.	N.D.	N.D.
As	mg/kg	0.5	3.8	0.9	47	N.D.	N.D.	N.D.
Ba	mg/kg	2	1500	375	18750	N.D.	N.D.	N.D.
B	mg/kg	2	1200	300	15000	N.D.	N.D.	N.D.
Cd	mg/kg	0.2	1.3	0.3	17	N.D.	N.D.	N.D.
Cr III	mg/kg	2	37.5	9.4	460	N.D.	N.D.	N.D.
Cr VI	mg/kg	0.015	0.02	0.005	0.053	N.D.	N.D.	N.D.
Co	mg/kg	2	10.5	2.6	130	N.D.	N.D.	N.D.
Cu	mg/kg	2	622.5	156	7700	N.D.	N.D.	N.D.
Pb	mg/kg	0.2	2.0	0.5	23	N.D.	N.D.	N.D.
Mn	mg/kg	2	1200	300	15000	N.D.	N.D.	N.D.
Hg	mg/kg	1	7.5	1.9	94	N.D.	N.D.	N.D.
Ni	mg/kg	2	75	18.8	930	N.D.	N.D.	N.D.
Se	mg/kg	2	37.5	9.4	460	N.D.	N.D.	N.D.
Sr	mg/kg	2	4500	1125	56000	N.D.	N.D.	N.D.
Sn	mg/kg	0.2	15000	3750	180000	N.D.	N.D.	N.D.
Organic tin	mg/kg	0.2	0.9	0.2	12	N.D.	N.D.	N.D.
Zn	mg/kg	2	3750	938	46000	N.D.	N.D.	N.D.



HONGKONG HUAXING INDUSTRIAL CO.,LIMITED

Technical Report: **(9024)218-0336**

AUG 06, 2024

Page 25 of 90

Test item(s)	Unit	MDL	Limit (mg/kg)			Result(s)		
			Category 1: dry, brittle, powder-like, or pliable materials	Category 2: liquid, or sticky materials	Category 3: scraped-off materials	149	150	151
Al	mg/kg	2	2250	560	28130	N.D.	N.D.	N.D.
Sb	mg/kg	2	45	11.3	560	N.D.	N.D.	N.D.
As	mg/kg	0.5	3.8	0.9	47	N.D.	N.D.	N.D.
Ba	mg/kg	2	1500	375	18750	N.D.	N.D.	N.D.
B	mg/kg	2	1200	300	15000	N.D.	N.D.	N.D.
Cd	mg/kg	0.2	1.3	0.3	17	N.D.	N.D.	N.D.
Cr III	mg/kg	2	37.5	9.4	460	N.D.	N.D.	N.D.
Cr VI	mg/kg	0.015	0.02	0.005	0.053	N.D.	N.D.	N.D.
Co	mg/kg	2	10.5	2.6	130	N.D.	N.D.	N.D.
Cu	mg/kg	2	622.5	156	7700	N.D.	N.D.	N.D.
Pb	mg/kg	0.2	2.0	0.5	23	N.D.	N.D.	N.D.
Mn	mg/kg	2	1200	300	15000	N.D.	N.D.	N.D.
Hg	mg/kg	1	7.5	1.9	94	N.D.	N.D.	N.D.
Ni	mg/kg	2	75	18.8	930	N.D.	N.D.	N.D.
Se	mg/kg	2	37.5	9.4	460	N.D.	N.D.	N.D.
Sr	mg/kg	2	4500	1125	56000	N.D.	N.D.	N.D.
Sn	mg/kg	0.2	15000	3750	180000	N.D.	N.D.	N.D.
Organic tin	mg/kg	0.2	0.9	0.2	12	N.D.	N.D.	N.D.
Zn	mg/kg	2	3750	938	46000	N.D.	N.D.	N.D.



HONGKONG HUAXING INDUSTRIAL CO.,LIMITED

Technical Report: **(9024)218-0336**

AUG 06, 2024

Page 26 of 90

Test item(s)	Unit	MDL	Limit (mg/kg)			Result(s)		
			Category 1: dry, brittle, powder-like, or pliable materials	Category 2: liquid, or sticky materials	Category 3: scraped-off materials	152	153	154
Al	mg/kg	2	2250	560	28130	N.D.	N.D.	N.D.
Sb	mg/kg	2	45	11.3	560	N.D.	N.D.	N.D.
As	mg/kg	0.5	3.8	0.9	47	N.D.	N.D.	N.D.
Ba	mg/kg	2	1500	375	18750	N.D.	N.D.	N.D.
B	mg/kg	2	1200	300	15000	N.D.	N.D.	N.D.
Cd	mg/kg	0.2	1.3	0.3	17	N.D.	N.D.	N.D.
Cr III	mg/kg	2	37.5	9.4	460	N.D.	N.D.	N.D.
Cr VI	mg/kg	0.015	0.02	0.005	0.053	N.D.	N.D.	N.D.
Co	mg/kg	2	10.5	2.6	130	N.D.	N.D.	N.D.
Cu	mg/kg	2	622.5	156	7700	N.D.	N.D.	N.D.
Pb	mg/kg	0.2	2.0	0.5	23	N.D.	N.D.	N.D.
Mn	mg/kg	2	1200	300	15000	N.D.	N.D.	N.D.
Hg	mg/kg	1	7.5	1.9	94	N.D.	N.D.	N.D.
Ni	mg/kg	2	75	18.8	930	N.D.	N.D.	N.D.
Se	mg/kg	2	37.5	9.4	460	N.D.	N.D.	N.D.
Sr	mg/kg	2	4500	1125	56000	N.D.	N.D.	N.D.
Sn	mg/kg	0.2	15000	3750	180000	N.D.	N.D.	N.D.
Organic tin	mg/kg	0.2	0.9	0.2	12	N.D.	N.D.	N.D.
Zn	mg/kg	2	3750	938	46000	N.D.	N.D.	N.D.

-The Migration content limit is Category 3.

Remark :

1. The migration of organic tin is expressed as Tributyltin(TBT).
2. Confirmation test of soluble chromium (III) & chromium (VI) is not required in case of soluble chromium does not exceed their requirements as specified in BS EN 71-3:2019+A1:2021.
3. Confirmation test of soluble organic tin is not required in case of soluble tin, after conversion, does not exceed the soluble organic tin requirement as specified in BS EN 71-3:2019+A1:2021.

(3) Heavy Elements content- ASTM F963-23 (Clause 4.3.5) Standard Consumer Safety Specification for Toy Safety.

Total Lead (Pb) Content in Non-Surface Coating Materials (Substrate)



HONGKONG HUAXING INDUSTRIAL CO.,LIMITED

Technical Report: **(9024)218-0336**

AUG 06, 2024

Page 27 of 90

Test Method: CPSC-CH-E1002-08.3

Test Instrument: Atomic Absorption Spectrophotometer (AAS)

Test item(s)	Unit	MDL	Limit	Result(s)		
				1+2+3	4+5	137+138+139
Lead(Pb)	mg/kg	10	100	N.D.	N.D.	N.D.

Test item(s)	Unit	MDL	Limit	Result(s)	
				147+148	149
Lead(Pb)	mg/kg	10	100	N.D.	N.D.

Soluble elements Content

Test Method: ASTM F 963-23 Section 8.3.5

Test Instrument: Inductively Coupled Plasma Optical Emission Spectrometer (ICP-OES)

Test item(s)	Unit	MDL	Limit	Result(s)				
				1	2	3	4	5
Cadmium(Cd)	mg/kg	5	75	N.D.	N.D.	N.D.	N.D.	N.D.
Lead(Pb)	mg/kg	5	90	N.D.	N.D.	N.D.	N.D.	N.D.
Chromium(Cr)	mg/kg	5	60	N.D.	N.D.	N.D.	N.D.	N.D.
Mercury(Hg)	mg/kg	5	60	N.D.	N.D.	N.D.	N.D.	N.D.
Antimony(Sb)	mg/kg	5	60	N.D.	N.D.	N.D.	N.D.	N.D.
Barium(Ba)	mg/kg	5	1000	N.D.	N.D.	N.D.	N.D.	N.D.
Arsenic(As)	mg/kg	5	25	N.D.	N.D.	N.D.	N.D.	N.D.
Selenium(Se)	mg/kg	5	500	N.D.	N.D.	N.D.	N.D.	N.D.



HONGKONG HUAXING INDUSTRIAL CO.,LIMITED

Technical Report: **(9024)218-0336**

AUG 06, 2024

Page 28 of 90

Test item(s)	Unit	MDL	Limit	Result(s)				
				6	7	8	9	137
Cadmium(Cd)	mg/kg	5	75	N.D.	N.D.	N.D.	N.D.	N.D.
Lead(Pb)	mg/kg	5	90	N.D.	N.D.	N.D.	N.D.	N.D.
Chromium(Cr)	mg/kg	5	60	N.D.	N.D.	N.D.	N.D.	N.D.
Mercury(Hg)	mg/kg	5	60	N.D.	N.D.	N.D.	N.D.	N.D.
Antimony(Sb)	mg/kg	5	60	N.D.	N.D.	N.D.	N.D.	N.D.
Barium(Ba)	mg/kg	5	1000	N.D.	N.D.	N.D.	N.D.	N.D.
Arsenic(As)	mg/kg	5	25	N.D.	N.D.	N.D.	N.D.	N.D.
Selenium(Se)	mg/kg	5	500	N.D.	N.D.	N.D.	N.D.	N.D.

Test item(s)	Unit	MDL	Limit	Result(s)				
				138	139	140	141	142
Cadmium(Cd)	mg/kg	5	75	N.D.	N.D.	N.D.	N.D.	N.D.
Lead(Pb)	mg/kg	5	90	N.D.	N.D.	N.D.	N.D.	N.D.
Chromium(Cr)	mg/kg	5	60	N.D.	N.D.	N.D.	N.D.	N.D.
Mercury(Hg)	mg/kg	5	60	N.D.	N.D.	N.D.	N.D.	N.D.
Antimony(Sb)	mg/kg	5	60	N.D.	N.D.	N.D.	N.D.	N.D.
Barium(Ba)	mg/kg	5	1000	N.D.	N.D.	N.D.	N.D.	N.D.
Arsenic(As)	mg/kg	5	25	N.D.	N.D.	N.D.	N.D.	N.D.
Selenium(Se)	mg/kg	5	500	N.D.	N.D.	N.D.	N.D.	N.D.



HONGKONG HUAXING INDUSTRIAL CO.,LIMITED

Technical Report: **(9024)218-0336**

AUG 06, 2024

Page 29 of 90

Test item(s)	Unit	MDL	Limit	Result(s)				
				143	147	148	149	150
Cadmium(Cd)	mg/kg	5	75	N.D.	N.D.	N.D.	N.D.	N.D.
Lead(Pb)	mg/kg	5	90	N.D.	N.D.	N.D.	N.D.	N.D.
Chromium(Cr)	mg/kg	5	60	N.D.	N.D.	N.D.	N.D.	N.D.
Mercury(Hg)	mg/kg	5	60	N.D.	N.D.	N.D.	N.D.	N.D.
Antimony(Sb)	mg/kg	5	60	N.D.	N.D.	N.D.	N.D.	N.D.
Barium(Ba)	mg/kg	5	1000	N.D.	N.D.	N.D.	N.D.	N.D.
Arsenic(As)	mg/kg	5	25	N.D.	N.D.	N.D.	N.D.	N.D.
Selenium(Se)	mg/kg	5	500	N.D.	N.D.	N.D.	N.D.	N.D.

Test item(s)	Unit	MDL	Limit	Result(s)			
				151	152	153	154
Cadmium(Cd)	mg/kg	5	75	N.D.	N.D.	N.D.	N.D.
Lead(Pb)	mg/kg	5	90	N.D.	N.D.	N.D.	N.D.
Chromium(Cr)	mg/kg	5	60	N.D.	N.D.	N.D.	N.D.
Mercury(Hg)	mg/kg	5	60	N.D.	N.D.	N.D.	N.D.
Antimony(Sb)	mg/kg	5	60	N.D.	N.D.	N.D.	N.D.
Barium(Ba)	mg/kg	5	1000	N.D.	N.D.	N.D.	N.D.
Arsenic(As)	mg/kg	5	25	N.D.	N.D.	N.D.	N.D.
Selenium(Se)	mg/kg	5	500	N.D.	N.D.	N.D.	N.D.



HONGKONG HUAXING INDUSTRIAL CO., LIMITED

Technical Report: **(9024)218-0336**

AUG 06, 2024

Page 30 of 90

(4) Soluble elements Content - AS/NZS ISO 8124.3:2021

Test Method: AS/NZS ISO 8124.3:2021

Test Instrument: Inductively Coupled Plasma Optical Emission Spectrometer (ICP-OES)

Test item(s)	Unit	MDL	Limit	Result(s)				
				1	2	3	4	5
Cadmium(Cd)	mg/kg	5	75	N.D.	N.D.	N.D.	N.D.	N.D.
Lead(Pb)	mg/kg	5	90	N.D.	N.D.	N.D.	N.D.	N.D.
Chromium(Cr)	mg/kg	5	60	N.D.	N.D.	N.D.	N.D.	N.D.
Mercury(Hg)	mg/kg	5	60	N.D.	N.D.	N.D.	N.D.	N.D.
Antimony(Sb)	mg/kg	5	60	N.D.	N.D.	N.D.	N.D.	N.D.
Barium(Ba)	mg/kg	5	1000	N.D.	N.D.	N.D.	N.D.	N.D.
Arsenic(As)	mg/kg	5	25	N.D.	N.D.	N.D.	N.D.	N.D.
Selenium(Se)	mg/kg	5	500	N.D.	N.D.	N.D.	N.D.	N.D.

Test item(s)	Unit	MDL	Limit	Result(s)				
				6	7	8	9	137
Cadmium(Cd)	mg/kg	5	75	N.D.	N.D.	N.D.	N.D.	N.D.
Lead(Pb)	mg/kg	5	90	N.D.	N.D.	N.D.	N.D.	N.D.
Chromium(Cr)	mg/kg	5	60	N.D.	N.D.	N.D.	N.D.	N.D.
Mercury(Hg)	mg/kg	5	60	N.D.	N.D.	N.D.	N.D.	N.D.
Antimony(Sb)	mg/kg	5	60	N.D.	N.D.	N.D.	N.D.	N.D.
Barium(Ba)	mg/kg	5	1000	N.D.	N.D.	N.D.	N.D.	N.D.
Arsenic(As)	mg/kg	5	25	N.D.	N.D.	N.D.	N.D.	N.D.
Selenium(Se)	mg/kg	5	500	N.D.	N.D.	N.D.	N.D.	N.D.



HONGKONG HUAXING INDUSTRIAL CO.,LIMITED

Technical Report: **(9024)218-0336**

AUG 06, 2024

Page 31 of 90

Test item(s)	Unit	MDL	Limit	Result(s)				
				138	139	140	141	142
Cadmium(Cd)	mg/kg	5	75	N.D.	N.D.	N.D.	N.D.	N.D.
Lead(Pb)	mg/kg	5	90	N.D.	N.D.	N.D.	N.D.	N.D.
Chromium(Cr)	mg/kg	5	60	N.D.	N.D.	N.D.	N.D.	N.D.
Mercury(Hg)	mg/kg	5	60	N.D.	N.D.	N.D.	N.D.	N.D.
Antimony(Sb)	mg/kg	5	60	N.D.	N.D.	N.D.	N.D.	N.D.
Barium(Ba)	mg/kg	5	1000	N.D.	N.D.	N.D.	N.D.	N.D.
Arsenic(As)	mg/kg	5	25	N.D.	N.D.	N.D.	N.D.	N.D.
Selenium(Se)	mg/kg	5	500	N.D.	N.D.	N.D.	N.D.	N.D.

Test item(s)	Unit	MDL	Limit	Result(s)				
				143	147	148	149	150
Cadmium(Cd)	mg/kg	5	75	N.D.	N.D.	N.D.	N.D.	N.D.
Lead(Pb)	mg/kg	5	90	N.D.	N.D.	N.D.	N.D.	N.D.
Chromium(Cr)	mg/kg	5	60	N.D.	N.D.	N.D.	N.D.	N.D.
Mercury(Hg)	mg/kg	5	60	N.D.	N.D.	N.D.	N.D.	N.D.
Antimony(Sb)	mg/kg	5	60	N.D.	N.D.	N.D.	N.D.	N.D.
Barium(Ba)	mg/kg	5	1000	N.D.	N.D.	N.D.	N.D.	N.D.
Arsenic(As)	mg/kg	5	25	N.D.	N.D.	N.D.	N.D.	N.D.
Selenium(Se)	mg/kg	5	500	N.D.	N.D.	N.D.	N.D.	N.D.



HONGKONG HUAXING INDUSTRIAL CO.,LIMITED

Technical Report: **(9024)218-0336**

AUG 06, 2024

Page 32 of 90

Test item(s)	Unit	MDL	Limit	Result(s)			
				151	152	153	154
Cadmium(Cd)	mg/kg	5	75	N.D.	N.D.	N.D.	N.D.
Lead(Pb)	mg/kg	5	90	N.D.	N.D.	N.D.	N.D.
Chromium(Cr)	mg/kg	5	60	N.D.	N.D.	N.D.	N.D.
Mercury(Hg)	mg/kg	5	60	N.D.	N.D.	N.D.	N.D.
Antimony(Sb)	mg/kg	5	60	N.D.	N.D.	N.D.	N.D.
Barium(Ba)	mg/kg	5	1000	N.D.	N.D.	N.D.	N.D.
Arsenic(As)	mg/kg	5	25	N.D.	N.D.	N.D.	N.D.
Selenium(Se)	mg/kg	5	500	N.D.	N.D.	N.D.	N.D.

(5) Toxicological Hazards content - Toys Regulations (SOR/2011-17 and amendment SOR/2016-195 & SOR/2016-302)

Test method: With reference to Method C02.3.2, Method C-07 and ASTM F963-23 Section 8.3.5

Test Instrument: Inductively Coupled Plasma Optical Emission Spectrometer (ICP-OES)

Test item(s)	Unit	MDL	Limit	Result(s)				
				1	2	3	4	5
Total Lead(Pb)	mg/kg	10	90	N.D.	N.D.	N.D.	N.D.	N.D.
Total Mercury (Hg)	mg/kg	10	10	N.D.	N.D.	N.D.	N.D.	N.D.
Soluble Antimony (Sb)	mg/kg	10	1000	N.D.	N.D.	N.D.	N.D.	N.D.
Soluble Arsenic (As)	mg/kg	10	1000	N.D.	N.D.	N.D.	N.D.	N.D.
Soluble Barium (Ba)	mg/kg	10	1000	N.D.	N.D.	N.D.	N.D.	N.D.
Soluble Cadmium (Cd)	mg/kg	10	1000	N.D.	N.D.	N.D.	N.D.	N.D.
Soluble Selenium (Se)	mg/kg	10	1000	N.D.	N.D.	N.D.	N.D.	N.D.



HONGKONG HUAXING INDUSTRIAL CO., LIMITED

Technical Report: **(9024)218-0336**

AUG 06, 2024

Page 33 of 90

Test item(s)	Unit	MDL	Limit	Result(s)				
				137	138	139	147	148
Total Lead(Pb)	mg/kg	10	90	N.D.	N.D.	N.D.	N.D.	N.D.
Total Mercury (Hg)	mg/kg	10	10	N.D.	N.D.	N.D.	N.D.	N.D.
Soluble Antimony (Sb)	mg/kg	10	1000	N.D.	N.D.	N.D.	N.D.	N.D.
Soluble Arsenic (As)	mg/kg	10	1000	N.D.	N.D.	N.D.	N.D.	N.D.
Soluble Barium (Ba)	mg/kg	10	1000	N.D.	N.D.	N.D.	N.D.	N.D.
Soluble Cadmium (Cd)	mg/kg	10	1000	N.D.	N.D.	N.D.	N.D.	N.D.
Soluble Selenium (Se)	mg/kg	10	1000	N.D.	N.D.	N.D.	N.D.	N.D.

Test item(s)	Unit	MDL	Limit	Result(s)
				149
Total Lead(Pb)	mg/kg	10	90	N.D.
Total Mercury (Hg)	mg/kg	10	10	N.D.
Soluble Antimony (Sb)	mg/kg	10	1000	N.D.
Soluble Arsenic (As)	mg/kg	10	1000	N.D.
Soluble Barium (Ba)	mg/kg	10	1000	N.D.
Soluble Cadmium (Cd)	mg/kg	10	1000	N.D.
Soluble Selenium (Se)	mg/kg	10	1000	N.D.

**(6) Total lead content - Consumer Product Safety Improvement Act of 2008(H.R. 4040) & H.R.2715 amendment
Title 1 section 101**

Total Lead (Pb) Content in Non-Surface Coating Materials (Substrate)

Test Method: CPSC-CH-E1002-08.3

Test Instrument: Atomic Absorption Spectrophotometer (AAS)

Test item(s)	Unit	MDL	Limit	Result(s)		
				1+2+3	4+5	137+138+139
Lead(Pb)	mg/kg	10	100	N.D.	N.D.	N.D.



HONGKONG HUAXING INDUSTRIAL CO., LIMITED

Technical Report: **(9024)218-0336**

AUG 06, 2024

Page 34 of 90

Test item(s)	Unit	MDL	Limit	Result(s)	
				147+148	149
Lead(Pb)	mg/kg	10	100	N.D.	N.D.

(7) Total lead content - California "Proposition 65"

Total Lead (Pb) Content in Non-Surface Coating Materials (Substrate)

Test Method: CPSC-CH-E1002-08.3

Test Instrument: Atomic Absorption Spectrophotometer (AAS)

Test item(s)	Unit	MDL	Limit	Result(s)		
				1+2+3	4+5	137+138+139
Lead(Pb)	mg/kg	10	100	N.D.	N.D.	N.D.

Test item(s)	Unit	MDL	Limit	Result(s)	
				147+148	149
Lead(Pb)	mg/kg	10	100	N.D.	N.D.

(8) Total Lead content - Consumer Products Containing Lead Regulations SOR/2018-83

Test method: With reference to Method C02.3.2:2021

Test Instrument: Atomic Absorption Spectrophotometer (AAS)

Test item(s)	Unit	MDL	Limit	Result(s)		
				1+2+3	4+5	137+138+139
Total Lead(Pb)	mg/kg	10	90	N.D.	N.D.	N.D.

Test item(s)	Unit	MDL	Limit	Result(s)	
				147+148	149
Total Lead(Pb)	mg/kg	10	90	N.D.	N.D.



HONGKONG HUAXING INDUSTRIAL CO.,LIMITED

Technical Report: **(9024)218-0336**

AUG 06, 2024

Page 35 of 90

(9) Total Lead content - Canada Surface coating materials regulations(SOR/2016-193&SOR/2022-122)

Test Method: With reference to Method C02.2.2:2020

Test Instrument: Atomic Absorption Spectrophotometer (AAS)

Test item(s)	Unit	MDL	Limit	Result(s)		
				-		
Lead(Pb)	mg/kg	10	90	N.A.		

Note: No accessible surface coating was found on the submitted samples. Consequently, analysis Total lead content in surface coating materials (Canada Consumer Product Safety Act, Surface Coating Materials Regulation, SOR/2016-193) was not conducted.

(10) Total lead content - 16 CFR 1303

Total Lead (Pb) Content in Surface Coating

Test Method: CPSC-CH-E1003-09.1

Test Instrument: Atomic Absorption Spectrophotometer (AAS)

Test item(s)	Unit	MDL	Limit	Result(s)		
				-		
Lead(Pb)	mg/kg	10	90	N.A.		

Note: No accessible surface coating was present on the received sample(s). Consequently, the lead content analysis of surface coatings according to modified 16 CFR 1303, "Ban of lead-containing paint and certain consumer products bearing lead-containing paint", was not conducted.

(11) Total Mercury content-Canadian Environmental Protection Act :Products Containing Mercury Regulations SOR/2014-254

Test Method: With reference to IEC 62321-4:2013+A1: 2017

Test Instrument: Inductively Coupled Plasma Optical Emission Spectrometer (ICP-OES)

Test item(s)	Unit	MDL	Limit	Result(s)		
				1+2+3	4+5+6	22+23+24
Total Mercury (Hg)	mg/kg	10	1000	N.D.	N.D.	N.D.

Test item(s)	Unit	MDL	Limit	Result(s)		
				25+26+27	131+133+134	137+138+139
Total Mercury (Hg)	mg/kg	10	1000	N.D.	N.D.	N.D.

Test item(s)	Unit	MDL	Limit	Result(s)		
--------------	------	-----	-------	-----------	--	--



HONGKONG HUAXING INDUSTRIAL CO.,LIMITED

Technical Report: **(9024)218-0336**

AUG 06, 2024

Page 36 of 90

				144+145+146	147+148	149
Total Mercury (Hg)	mg/kg	10	1000	N.D.	N.D.	N.D.

Test item(s)	Unit	MDL	Limit	Result(s)		
				155+156		
Total Mercury (Hg)	mg/kg	10	1000	N.D.		

(12)Total Cadmium content- Item 23 of Annex XVII of REACH Regulation (EC) 1907/2006

Test Method: IEC 62321-5: 2013

Test Instrument: Atomic Absorption Spectrophotometer (AAS)

Test item(s)	Unit	MDL	Limit	Result(s)		
				16	22+23+24	25+26+27
Cadmium(Cd)	mg/kg	5	Refer to Remark	N.D.	N.D.	N.D.

Test item(s)	Unit	MDL	Limit	Result(s)		
				52+53+63	56+57+61	65+79+80
Cadmium(Cd)	mg/kg	5	Refer to Remark	N.D.	N.D.	N.D.

Test item(s)	Unit	MDL	Limit	Result(s)		
				66+69+71	82+85+86	118+119
Cadmium(Cd)	mg/kg	5	Refer to Remark	N.D.	N.D.	N.D.

Test item(s)	Unit	MDL	Limit	Result(s)		
				131+133+134	137+138+139	144+145+146
Cadmium(Cd)	mg/kg	5	Refer to Remark	N.D.	N.D.	N.D.

Test item(s)	Unit	MDL	Limit	Result(s)		
				147+148	149	155+156
Cadmium(Cd)	mg/kg	5	Refer to Remark	N.D.	N.D.	N.D.

Remark:

Category	Limit (mg/kg)
Paints with code[3208]and [3209]	100



HONGKONG HUAXING INDUSTRIAL CO., LIMITED

Technical Report: **(9024)218-0336**

AUG 06, 2024

Page 37 of 90

Paints with code[3208]and [3209] with a zinc content exceeding 10% by weight of the paint	1000
Painted article	1000
Plastic	100
Metal parts of jewelry & hair accessories	100

(13)PAHs content- Item 50 of Annex XVII of REACH Regulation (EC) 1907/2006 & amendment (EU) No 1272/2013.

Test Method: With reference to AfPS-GS-2019-01: PAK

Test Instrument: Gas Chromatography-Mass Spectrometer (GC-MS)

No.	Test item(s)	CAS No	Unit	MDL	Result(s)	
					1+2+3	4+5
1	Benzo (a)anthracene (BaA)	56-55-3	mg/kg	0.2	N.D.	N.D.
2	Chrysene (CHR)	218-01-9	mg/kg	0.2	N.D.	N.D.
3	Benzo (b) fluoranthene (BbFA)	205-99-2	mg/kg	0.2	N.D.	N.D.
4	Benzo (k) fluoranthene (BkFA)	207-08-9	mg/kg	0.2	N.D.	N.D.
5	Benzo (j) fluoranthene (BjFA)	205-82-3	mg/kg	0.2	N.D.	N.D.
6	Benzo (e) pyrene (BeP)	192-97-2	mg/kg	0.2	N.D.	N.D.
7	Benzo (a) pyrene (BaP)	50-32-8	mg/kg	0.2	N.D.	N.D.
8	Dibenzo (a,h) anthracene (DBAhA)	53-70-3	mg/kg	0.2	N.D.	N.D.

No.	Test item(s)	CAS No	Unit	MDL	Result(s)	
					137+138+139	147+148
1	Benzo (a)anthracene (BaA)	56-55-3	mg/kg	0.2	N.D.	N.D.
2	Chrysene (CHR)	218-01-9	mg/kg	0.2	N.D.	N.D.
3	Benzo (b) fluoranthene (BbFA)	205-99-2	mg/kg	0.2	N.D.	N.D.
4	Benzo (k) fluoranthene (BkFA)	207-08-9	mg/kg	0.2	N.D.	N.D.
5	Benzo (j) fluoranthene (BjFA)	205-82-3	mg/kg	0.2	N.D.	N.D.
6	Benzo (e) pyrene (BeP)	192-97-2	mg/kg	0.2	N.D.	N.D.
7	Benzo (a) pyrene (BaP)	50-32-8	mg/kg	0.2	N.D.	N.D.



HONGKONG HUAXING INDUSTRIAL CO., LIMITED

Technical Report: **(9024)218-0336**

AUG 06, 2024

Page 38 of 90

No.	Test item(s)	CAS No	Unit	MDL	Result(s)	
					137+138+139	147+148
8	Dibenzo (a,h) anthracene (DBAhA)	53-70-3	mg/kg	0.2	N.D.	N.D.

No.	Test item(s)	CAS No	Unit	MDL	Result(s)
					149
1	Benzo (a)anthracene (BaA)	56-55-3	mg/kg	0.2	N.D.
2	Chrysene (CHR)	218-01-9	mg/kg	0.2	N.D.
3	Benzo (b) fluoranthene (BbFA)	205-99-2	mg/kg	0.2	N.D.
4	Benzo (k) fluoranthene (BkFA)	207-08-9	mg/kg	0.2	N.D.
5	Benzo (j) fluoranthene (BjFA)	205-82-3	mg/kg	0.2	N.D.
6	Benzo (e) pyrene (BeP)	192-97-2	mg/kg	0.2	N.D.
7	Benzo (a) pyrene (BaP)	50-32-8	mg/kg	0.2	N.D.
8	Dibenzo (a,h) anthracene (DBAhA)	53-70-3	mg/kg	0.2	N.D.

Remark:

(1) (EU) No 1272/2013 amending Item No 50 of Annex XVII of REACH Regulation (EC) 1907/2006

Parameter (mg/kg)	Category 1	Category 2
	Articles come into direct as well as prolonged or short-term repetitive contact with the human skin or the oral cavity, under normal or reasonably foreseeable conditions of use Such articles include amongst others: - sport equipment such as bicycles, golf clubs, racquets. - household utensils, trolleys, walking frames - tools for domestic use - clothing, footwear, gloves and sportswear - watch-straps, wrist-bands, masks, head-bands	Toys, including activity toys, and childcare articles, that come into direct as well as prolonged or short-term repetitive contact with the human skin or the oral cavity, under normal or reasonably foreseeable conditions of use,
Benzo[a]pyrene	<1	<0.5
Benzo[e]pyrene	<1	<0.5
Benzo[a]anthracene	<1	<0.5



HONGKONG HUAXING INDUSTRIAL CO., LIMITED

Technical Report: **(9024)218-0336**

AUG 06, 2024

Page 39 of 90

Parameter (mg/kg)	Category 1	Category 2
	Articles come into direct as well as prolonged or short-term repetitive contact with the human skin or the oral cavity, under normal or reasonably foreseeable conditions of use Such articles include amongst others: - sport equipment such as bicycles, golf clubs, racquets. - household utensils, trolleys, walking frames - tools for domestic use - clothing, footwear, gloves and sportswear - watch-straps, wrist-bands, masks, head-bands	Toys, including activity toys, and childcare articles, that come into direct as well as prolonged or short-term repetitive contact with the human skin or the oral cavity, under normal or reasonably foreseeable conditions of use,
Benzo[b]fluoranthene	<1	<0.5
Benzo[j]fluoranthene	<1	<0.5
Benzo[k]fluoranthene	<1	<0.5
Chrysene	<1	<0.5
Dibenzo[a,h]anthracene	<1	<0.5

- The PAHs limit is Category 2

(14) Specific Migration of Bisphenol A (BPA)- Directive 2009/48/EC and its amendment Directive (EU) 2017/898.

Test Method: EN 71-10:2005& EN 71-11:2005

Test Instrument: High Performance Liquid Chromatography (HPLC)

Test item(s)	Unit	MDL	Limit	Result(s)		
				1+2+3	4+5	137+138+139
Specific Migration of Bisphenol A (BPA)	mg/L	0.02	0.04	N.D.	N.D.	N.D.

Test item(s)	Unit	MDL	Limit	Result(s)	
				147+148	149
Specific Migration of Bisphenol A (BPA)	mg/L	0.02	0.04	N.D.	N.D.

(15) Phthalates content- Consumer Product Safety Improvement Act of 2008(H.R. 4040) & H.R.2715 amendment & 16 CFR Part 1307-Prohibition of Children Toys and Child Care Articles Containing Specified Phthalates.

Test Method: CPSC-CH-C1001-09.4

Test Instrument: Gas Chromatography-Mass Spectrometer (GC-MS)

Test item(s)	CAS No.	Unit	MDL	Limit	Result(s)	
					1+2+3	4+5



HONGKONG HUAXING INDUSTRIAL CO., LIMITED

Technical Report: **(9024)218-0336**

AUG 06, 2024

Page 40 of 90

Test item(s)	CAS No.	Unit	MDL	Limit	Result(s)	
					1+2+3	4+5
Bis (2-ethylhexyl) phthalate (DEHP)	117-81-7	mg/kg	50	1000	N.D.	N.D.
Dibutyl phthalate (DBP)	84-74-2	mg/kg	50	1000	N.D.	N.D.
Benzyl butyl phthalate (BBP)	85-68-7	mg/kg	50	1000	N.D.	N.D.
Di-iso-nonyl phthalate (DINP)	28553-12-0 68515-48-0	mg/kg	100	1000	N.D.	N.D.
Diisobutyl phthalate (DIBP)	84-69-5	mg/kg	50	1000	N.D.	N.D.
Di-n-pentyl Phthalate (DPENP)	131-18-0	mg/kg	50	1000	N.D.	N.D.
Di-n-hexyl Phthalate (DHEXP)	84-75-3	mg/kg	50	1000	N.D.	N.D.
Dicyclohexyl Phthalate (DCHP)	84-61-7	mg/kg	50	1000	N.D.	N.D.



HONGKONG HUAXING INDUSTRIAL CO.,LIMITED

Technical Report: **(9024)218-0336**

AUG 06, 2024

Page 41 of 90

Test item(s)	CAS No.	Unit	MDL	Limit	Result(s)	
					137+138 +139	147+148
Bis (2-ethylhexyl) phthalate (DEHP)	117-81-7	mg/kg	50	1000	N.D.	N.D.
Dibutyl phthalate (DBP)	84-74-2	mg/kg	50	1000	N.D.	N.D.
Benzyl butyl phthalate (BBP)	85-68-7	mg/kg	50	1000	N.D.	N.D.
Di-iso-nonyl phthalate (DINP)	28553-12-0 68515-48-0	mg/kg	100	1000	N.D.	N.D.
Diisobutyl phthalate (DIBP)	84-69-5	mg/kg	50	1000	N.D.	N.D.
Di-n-pentyl Phthalate (DPENP)	131-18-0	mg/kg	50	1000	N.D.	N.D.
Di-n-hexyl Phthalate (DHEXP)	84-75-3	mg/kg	50	1000	N.D.	N.D.
Dicyclohexyl Phthalate (DCHP)	84-61-7	mg/kg	50	1000	N.D.	N.D.

Test item(s)	CAS No.	Unit	MDL	Limit	Result(s)
					149
Bis (2-ethylhexyl) phthalate (DEHP)	117-81-7	mg/kg	50	1000	N.D.
Dibutyl phthalate (DBP)	84-74-2	mg/kg	50	1000	N.D.
Benzyl butyl phthalate (BBP)	85-68-7	mg/kg	50	1000	N.D.
Di-iso-nonyl phthalate (DINP)	28553-12-0 68515-48-0	mg/kg	100	1000	N.D.
Diisobutyl phthalate (DIBP)	84-69-5	mg/kg	50	1000	N.D.
Di-n-pentyl Phthalate (DPENP)	131-18-0	mg/kg	50	1000	N.D.
Di-n-hexyl Phthalate (DHEXP)	84-75-3	mg/kg	50	1000	N.D.
Dicyclohexyl Phthalate (DCHP)	84-61-7	mg/kg	50	1000	N.D.

(16)Phthalates content- California "Proposition 65".

Test Method: CPSC-CH-C1001-09.4

Test Instrument: Gas Chromatography - Mass Spectrometer (GC-MS)

Test item(s)	Unit	MDL	Limit	Result(s)
--------------	------	-----	-------	-----------



HONGKONG HUAXING INDUSTRIAL CO., LIMITED

Technical Report: **(9024)218-0336**

AUG 06, 2024

Page 42 of 90

				1+2+3	4+5
Bis (2-ethylhexyl) phthalate (DEHP)	mg/kg	50	1000	N.D.	N.D.
Dibutyl phthalate (DBP)	mg/kg	50	1000	N.D.	N.D.
Benzyl butyl phthalate (BBP)	mg/kg	50	1000	N.D.	N.D.
Di-n-hexyl phthalate (DNHP)	mg/kg	50	1000	N.D.	N.D.
Diisodecyl phthalate (DIDP)	mg/kg	100	1000	N.D.	N.D.
Di-iso-nonyl phthalate (DINP)	mg/kg	100	1000	N.D.	N.D.

Test item(s)	Unit	MDL	Limit	Result(s)	
				137+138+139	147+148
Bis (2-ethylhexyl) phthalate (DEHP)	mg/kg	50	1000	N.D.	N.D.
Dibutyl phthalate (DBP)	mg/kg	50	1000	N.D.	N.D.
Benzyl butyl phthalate (BBP)	mg/kg	50	1000	N.D.	N.D.
Di-n-hexyl phthalate (DNHP)	mg/kg	50	1000	N.D.	N.D.
Diisodecyl phthalate (DIDP)	mg/kg	100	1000	N.D.	N.D.
Di-iso-nonyl phthalate (DINP)	mg/kg	100	1000	N.D.	N.D.

Test item(s)	Unit	MDL	Limit	Result(s)	
				149	
Bis (2-ethylhexyl) phthalate (DEHP)	mg/kg	50	1000	N.D.	
Dibutyl phthalate (DBP)	mg/kg	50	1000	N.D.	
Benzyl butyl phthalate (BBP)	mg/kg	50	1000	N.D.	
Di-n-hexyl phthalate (DNHP)	mg/kg	50	1000	N.D.	
Diisodecyl phthalate (DIDP)	mg/kg	100	1000	N.D.	
Di-iso-nonyl phthalate (DINP)	mg/kg	100	1000	N.D.	

(17)Phthalates content- Item 51 & 52 of Annex XVII of REACH Regulation (EC) 1907/2006

Test Method: With reference to EN 14372:2004(E)

Test Instrument: Gas Chromatography-Mass Spectrometer (GC-MS)

Test item(s)	Unit	MDL	Limit	Result(s)		
				1+2+3	4+5	16



HONGKONG HUAXING INDUSTRIAL CO.,LIMITED

Technical Report: **(9024)218-0336**

AUG 06, 2024

Page 43 of 90

Bis-(2-ethylhexyl)Phthalate (DEHP)	mg/kg	50	1000	N.D.	N.D.	N.D.
Dibutyl Phthalate (DBP)	mg/kg	50	1000	N.D.	N.D.	N.D.
Benzylbutyl Phthalate (BBP)	mg/kg	50	1000	N.D.	N.D.	N.D.
Diisobutyl phthalate (DIBP)	mg/kg	50	1000	N.D.	N.D.	N.D.
Total(DEHP+ DBP+BBP+ DIBP)	mg/kg	/	1000	N.D.	N.D.	N.D.
Diisononyl Phthalate (DINP)	mg/kg	100	/	N.D.	N.D.	N.D.
Diisodecyl Phthalate (DIDP)	mg/kg	100	/	N.D.	N.D.	N.D.
Di-n-octyl Phthalate (DNOP)	mg/kg	50	/	N.D.	N.D.	N.D.
Total(DINP+ DIDP+DNOP)	mg/kg	/	1000	N.D.	N.D.	N.D.

Test item(s)	Unit	MDL	Limit	Result(s)		
				22+23+24	25+26+27	52+53+63
Bis-(2-ethylhexyl)Phthalate (DEHP)	mg/kg	50	1000	N.D.	N.D.	N.D.
Dibutyl Phthalate (DBP)	mg/kg	50	1000	N.D.	N.D.	N.D.
Benzylbutyl Phthalate (BBP)	mg/kg	50	1000	N.D.	N.D.	N.D.
Diisobutyl phthalate (DIBP)	mg/kg	50	1000	N.D.	N.D.	N.D.
Total(DEHP+ DBP+BBP+ DIBP)	mg/kg	/	1000	N.D.	N.D.	N.D.
Diisononyl Phthalate (DINP)	mg/kg	100	/	N.D.	N.D.	N.D.
Diisodecyl Phthalate (DIDP)	mg/kg	100	/	N.D.	N.D.	N.D.
Di-n-octyl Phthalate (DNOP)	mg/kg	50	/	N.D.	N.D.	N.D.
Total(DINP+ DIDP+DNOP)	mg/kg	/	1000	N.D.	N.D.	N.D.

Test item(s)	Unit	MDL	Limit	Result(s)		
				56+57+61	65+79+80	66+69+71
Bis-(2-ethylhexyl)Phthalate (DEHP)	mg/kg	50	1000	N.D.	N.D.	N.D.
Dibutyl Phthalate (DBP)	mg/kg	50	1000	N.D.	N.D.	N.D.
Benzylbutyl Phthalate (BBP)	mg/kg	50	1000	N.D.	N.D.	N.D.
Diisobutyl phthalate (DIBP)	mg/kg	50	1000	N.D.	N.D.	N.D.



HONGKONG HUAXING INDUSTRIAL CO., LIMITED

Technical Report: **(9024)218-0336**

AUG 06, 2024

Page 44 of 90

Total(DEHP+ DBP+BBP+ DIBP)	mg/kg	/	1000	N.D.	N.D.	N.D.
Diisononyl Phthalate (DINP)	mg/kg	100	/	N.D.	N.D.	N.D.
Diisodecyl Phthalate (DIDP)	mg/kg	100	/	N.D.	N.D.	N.D.
Di-n-octyl Phthalate (DNOP)	mg/kg	50	/	N.D.	N.D.	N.D.
Total(DINP+ DIDP+DNOP)	mg/kg	/	1000	N.D.	N.D.	N.D.

Test item(s)	Unit	MDL	Limit	Result(s)		
				82+85+86	118+119	131+133+134
Bis-(2-ethylhexyl)Phthalate (DEHP)	mg/kg	50	1000	N.D.	80	105
Dibutyl Phthalate (DBP)	mg/kg	50	1000	N.D.	N.D.	N.D.
Benzylbutyl Phthalate (BBP)	mg/kg	50	1000	N.D.	N.D.	N.D.
Diisobutyl phthalate (DIBP)	mg/kg	50	1000	N.D.	N.D.	N.D.
Total(DEHP+ DBP+BBP+ DIBP)	mg/kg	/	1000	N.D.	80	105
Diisononyl Phthalate (DINP)	mg/kg	100	/	N.D.	N.D.	N.D.
Diisodecyl Phthalate (DIDP)	mg/kg	100	/	N.D.	N.D.	N.D.
Di-n-octyl Phthalate (DNOP)	mg/kg	50	/	N.D.	N.D.	N.D.
Total(DINP+ DIDP+DNOP)	mg/kg	/	1000	N.D.	N.D.	N.D.

Test item(s)	Unit	MDL	Limit	Result(s)		
				137+138+139	144+145+146	147+148
Bis-(2-ethylhexyl)Phthalate (DEHP)	mg/kg	50	1000	N.D.	N.D.	N.D.
Dibutyl Phthalate (DBP)	mg/kg	50	1000	N.D.	N.D.	N.D.
Benzylbutyl Phthalate (BBP)	mg/kg	50	1000	N.D.	N.D.	N.D.
Diisobutyl phthalate (DIBP)	mg/kg	50	1000	N.D.	N.D.	N.D.
Total(DEHP+ DBP+BBP+ DIBP)	mg/kg	/	1000	N.D.	N.D.	N.D.
Diisononyl Phthalate (DINP)	mg/kg	100	/	N.D.	N.D.	N.D.



HONGKONG HUAXING INDUSTRIAL CO.,LIMITED

Technical Report: **(9024)218-0336**

AUG 06, 2024

Page 45 of 90

Diisodecyl Phthalate (DIDP)	mg/kg	100	/	N.D.	N.D.	N.D.
Di-n-octyl Phthalate (DNOP)	mg/kg	50	/	N.D.	N.D.	N.D.
Total(DINP+ DIDP+DNOP)	mg/kg	/	1000	N.D.	N.D.	N.D.

Test item(s)	Unit	MDL	Limit	Result(s)	
				149	155+156
Bis-(2-ethylhexyl)Phthalate (DEHP)	mg/kg	50	1000	N.D.	N.D.
Dibutyl Phthalate (DBP)	mg/kg	50	1000	N.D.	N.D.
Benzylbutyl Phthalate (BBP)	mg/kg	50	1000	N.D.	N.D.
Diisobutyl phthalate (DIBP)	mg/kg	50	1000	N.D.	N.D.
Total(DEHP+ DBP+BBP+ DIBP)	mg/kg	/	1000	N.D.	N.D.
Diisononyl Phthalate (DINP)	mg/kg	100	/	N.D.	N.D.
Diisodecyl Phthalate (DIDP)	mg/kg	100	/	N.D.	N.D.
Di-n-octyl Phthalate (DNOP)	mg/kg	50	/	N.D.	N.D.
Total(DINP+ DIDP+DNOP)	mg/kg	/	1000	N.D.	N.D.

(18)Phthalates content- Canada Consumer Product Safety Act : Phthalates Regulations (SOR/2016-188)

Test Method: Health Canada Method C34:2018

Test Instrument: Gas Chromatography-Mass Spectrometer (GC-MS)

Test item(s)	Unit	MDL	Limit	Result(s)
				-
Bis-(2-ethylhexyl)Phthalate (DEHP)	mg/kg	50	1000	N.A.
Dibutyl Phthalate (DBP)	mg/kg	50	1000	N.A.
Benzylbutyl Phthalate (BBP)	mg/kg	50	1000	N.A.
Di-n-octyl Phthalate (DNOP)	mg/kg	50	1000	N.A.
Diisononyl Phthalate (DINP)	mg/kg	100	1000	N.A.
Diisodecyl Phthalate (DIDP)	mg/kg	100	1000	N.A.



HONGKONG HUAXING INDUSTRIAL CO.,LIMITED

Technical Report: **(9024)218-0336**

AUG 06, 2024

Page 46 of 90

Note: No PVC materials presented on the received sample(s). Therefore, the phthalates content analysis of PVC materials according to Canada Consumer Product Safety Act, Phthalate Regulations, SOR/2016-188, was not conducted.

(19)Phthalates content- Australia Competition and Consumer Act 2010 in children's products - Consumer Protection Notice No. 11 of 2011

Test Method: With reference to EN 14372:2004

Test Instrument: Gas Chromatography-Mass Spectrometer (GC-MS)

Test item(s)	CAS No.	Unit	MDL	Limit	Result(s)
					1+2+3
Bis (2-ethylhexyl) phthalate (DEHP)	117-81-7	mg/kg	50	10000	N.D.

Test item(s)	CAS No.	Unit	MDL	Limit	Result(s)
					4+5
Bis (2-ethylhexyl) phthalate (DEHP)	117-81-7	mg/kg	50	10000	N.D.

Test item(s)	CAS No.	Unit	MDL	Limit	Result(s)
					16
Bis (2-ethylhexyl) phthalate (DEHP)	117-81-7	mg/kg	50	10000	N.D.

Test item(s)	CAS No.	Unit	MDL	Limit	Result(s)
					22+23+24
Bis (2-ethylhexyl) phthalate (DEHP)	117-81-7	mg/kg	50	10000	N.D.

Test item(s)	CAS No.	Unit	MDL	Limit	Result(s)
					25+26+27
Bis (2-ethylhexyl) phthalate (DEHP)	117-81-7	mg/kg	50	10000	N.D.

Test item(s)	CAS No.	Unit	MDL	Limit	Result(s)
					52+53+63
Bis (2-ethylhexyl) phthalate (DEHP)	117-81-7	mg/kg	50	10000	N.D.

Test item(s)	CAS No.	Unit	MDL	Limit	Result(s)
					56+57+61



HONGKONG HUAXING INDUSTRIAL CO., LIMITED

Technical Report: **(9024)218-0336**

AUG 06, 2024

Page 47 of 90

Test item(s)	CAS No.	Unit	MDL	Limit	Result(s)
					56+57+61
Bis (2-ethylhexyl) phthalate (DEHP)	117-81-7	mg/kg	50	10000	N.D.

Test item(s)	CAS No.	Unit	MDL	Limit	Result(s)
					65+79+80
Bis (2-ethylhexyl) phthalate (DEHP)	117-81-7	mg/kg	50	10000	N.D.

Test item(s)	CAS No.	Unit	MDL	Limit	Result(s)
					66+69+71
Bis (2-ethylhexyl) phthalate (DEHP)	117-81-7	mg/kg	50	10000	N.D.

Test item(s)	CAS No.	Unit	MDL	Limit	Result(s)
					82+85+86
Bis (2-ethylhexyl) phthalate (DEHP)	117-81-7	mg/kg	50	10000	N.D.

Test item(s)	CAS No.	Unit	MDL	Limit	Result(s)
					118+119
Bis (2-ethylhexyl) phthalate (DEHP)	117-81-7	mg/kg	50	10000	80

Test item(s)	CAS No.	Unit	MDL	Limit	Result(s)
					131+133+134
Bis (2-ethylhexyl) phthalate (DEHP)	117-81-7	mg/kg	50	10000	105

Test item(s)	CAS No.	Unit	MDL	Limit	Result(s)
					137+138+139
Bis (2-ethylhexyl) phthalate (DEHP)	117-81-7	mg/kg	50	10000	N.D.

Test item(s)	CAS No.	Unit	MDL	Limit	Result(s)
					144+145+146
Bis (2-ethylhexyl) phthalate (DEHP)	117-81-7	mg/kg	50	10000	N.D.



HONGKONG HUAXING INDUSTRIAL CO., LIMITED

Technical Report: **(9024)218-0336**

AUG 06, 2024

Page 48 of 90

Test item(s)	CAS No.	Unit	MDL	Limit	Result(s)
					147+148
Bis (2-ethylhexyl) phthalate (DEHP)	117-81-7	mg/kg	50	10000	N.D.

Test item(s)	CAS No.	Unit	MDL	Limit	Result(s)
					149
Bis (2-ethylhexyl) phthalate (DEHP)	117-81-7	mg/kg	50	10000	N.D.

Test item(s)	CAS No.	Unit	MDL	Limit	Result(s)
					155+156
Bis (2-ethylhexyl) phthalate (DEHP)	117-81-7	mg/kg	50	10000	N.D.

(20) TCEP content - Polyurethane foam Regulations SOR/2014-79.

Test Method: In-house method

Test Instrument: Gas Chromatography-Mass Spectrometer (GC-MS)

Test item(s)	CAS No.	Unit	MDL	Limit	Result(s)
					1+2+3
Tris(2-chloroethyl) phosphate (TCEP)	115-96-8	mg/kg	0.5	Not Detected	N.D.

Test item(s)	CAS No.	Unit	MDL	Limit	Result(s)
					4+5
Tris(2-chloroethyl) phosphate (TCEP)	115-96-8	mg/kg	0.5	Not Detected	N.D.

Test item(s)	CAS No.	Unit	MDL	Limit	Result(s)
					6+7+8
Tris(2-chloroethyl) phosphate (TCEP)	115-96-8	mg/kg	0.5	Not Detected	N.D.

Test item(s)	CAS No.	Unit	MDL	Limit	Result(s)
					137+138+139
Tris(2-chloroethyl) phosphate (TCEP)	115-96-8	mg/kg	0.5	Not Detected	N.D.



HONGKONG HUAXING INDUSTRIAL CO.,LIMITED

Technical Report: **(9024)218-0336**

AUG 06, 2024

Page 49 of 90

Test item(s)	CAS No.	Unit	MDL	Limit	Result(s)
					140+141+142
Tris(2-chloroethyl) phosphate (TCEP)	115-96-8	mg/kg	0.5	Not Detected	N.D.

Test item(s)	CAS No.	Unit	MDL	Limit	Result(s)
					143+153+154
Tris(2-chloroethyl) phosphate (TCEP)	115-96-8	mg/kg	0.5	Not Detected	N.D.

Test item(s)	CAS No.	Unit	MDL	Limit	Result(s)
					147+148
Tris(2-chloroethyl) phosphate (TCEP)	115-96-8	mg/kg	0.5	Not Detected	N.D.

Test item(s)	CAS No.	Unit	MDL	Limit	Result(s)
					149
Tris(2-chloroethyl) phosphate (TCEP)	115-96-8	mg/kg	0.5	Not Detected	N.D.

Test item(s)	CAS No.	Unit	MDL	Limit	Result(s)
					150+151
Tris(2-chloroethyl) phosphate (TCEP)	115-96-8	mg/kg	0.5	Not Detected	N.D.

Test item(s)	CAS No.	Unit	MDL	Limit	Result(s)
					152
Tris(2-chloroethyl) phosphate (TCEP)	115-96-8	mg/kg	0.5	Not Detected	N.D.

(21)Phthalates content

Test Method: With reference to CPSC-CH-C1001-09.4

Test Instrument: Gas Chromatography-Mass Spectrometer (GC-MS)

Test item(s)	CAS No.	Unit	MDL	Client Limit	Result(s)	
					1+2+3	4+5
Benzyl butyl phthalate(BBP)	85-68-7	mg/kg	50	1000	N.D.	N.D.
Dibutyl phthalate (DBP)	84-74-2	mg/kg	50	1000	N.D.	N.D.
Di-2-ethylhexyl phthalate (DEHP)	117-81-7	mg/kg	50	1000	N.D.	N.D.



HONGKONG HUAXING INDUSTRIAL CO.,LIMITED

Technical Report: **(9024)218-0336**

AUG 06, 2024

Page 50 of 90

Test item(s)	CAS No.	Unit	MDL	Client Limit	Result(s)	
					1+2+3	4+5
Diisobutyl phthalate(DIBP)	84-69-5	mg/kg	50	1000	N.D.	N.D.
Di(2-methoxyethy) phthalate (DMEP)	117-82-8	mg/kg	50	1000	N.D.	N.D.
1,2-Benzenedicarboxylic acid, dipentylester, branched and linear(DPP)	131-18-0	mg/kg	50	1000	N.D.	N.D.
1,2-Benzenedicarboxylic acid, dihexyl ester, branched and linear	68515-50-4	mg/kg	50	1000	N.D.	N.D.
n-Pentyl –isopentylphthalate(nPiPP)	776297-69-9	mg/kg	50	1000	N.D.	N.D.
Diisopentyl phthalate(DIPP)	605-50-5	mg/kg	50	1000	N.D.	N.D.
1,2-Benzenedicarboxylic acid, dipentylester branched and linear	84777-06-0	mg/kg	50	1000	N.D.	N.D.
1,2-Benzenedicarboxylic acid, di-C6-8-branched alkyl esters, C7-rich (DIHP)	71888-89-6	mg/kg	50	1000	N.D.	N.D.
1,2-Benzenedicarboxylic acid, di-C7-11-branched and linear alkyl esters (DHNUP)	68515-42-4	mg/kg	50	1000	N.D.	N.D.
Di-n-hexyl Phthalate(DHP)	84-75-3	mg/kg	50	1000	N.D.	N.D.
1,2-benzenedicarboxylic acid, diC6-10-alkyl esters or mixed decyl and hexyl and octyl diesters with ≥0.3% of dihexyl phthalate (EC No.201-559-5)	68515-51-5 68648-93-1	mg/kg	50	1000	N.D.	N.D.
Di-iso-nonyl phthalate (DINP)	28553-12-0	mg/kg	50	1000	N.D.	N.D.
Diisodecyl Phthalate (DIDP)	26761-40-0	mg/kg	50	1000	N.D.	N.D.
Di-n-octyl Phthalate(DNOP)	117-84-0	mg/kg	50	1000	N.D.	N.D.
Diethyl Phthalate(DEP)	84-66-2	mg/kg	50	1000	N.D.	N.D.
Dicyclohexyl phthalate (DCHP)	84-61-7	mg/kg	50	1000	N.D.	N.D.

Test item(s)	CAS No.	Unit	MDL	Client Limit	Result(s)	
					16	22+23+24
Benzyl butyl phthalate(BBP)	85-68-7	mg/kg	50	1000	N.D.	N.D.
Dibutyl phthalate (DBP)	84-74-2	mg/kg	50	1000	N.D.	N.D.
Di-2-ethylhexyl phthalate	117-81-7	mg/kg	50	1000	N.D.	N.D.



HONGKONG HUAXING INDUSTRIAL CO., LIMITED

Technical Report: **(9024)218-0336**

AUG 06, 2024

Page 51 of 90

Test item(s)	CAS No.	Unit	MDL	Client Limit	Result(s)	
					16	22+23+24
(DEHP)						
Diisobutyl phthalate(DIBP)	84-69-5	mg/kg	50	1000	N.D.	N.D.
Di(2-methoxyethy) phthalate (DMEP)	117-82-8	mg/kg	50	1000	N.D.	N.D.
1,2-Benzenedicarboxylic acid, dipentylester, branched and linear(DPP)	131-18-0	mg/kg	50	1000	N.D.	N.D.
1,2-Benzenedicarboxylic acid, dihexyl ester, branched and linear	68515-50-4	mg/kg	50	1000	N.D.	N.D.
n-Pentyl –isopentylphthalate(nPiPP)	776297-69-9	mg/kg	50	1000	N.D.	N.D.
Diisopentyl phthalate(DIPP)	605-50-5	mg/kg	50	1000	N.D.	N.D.
1,2-Benzenedicarboxylic acid, dipentylester branched and linear	84777-06-0	mg/kg	50	1000	N.D.	N.D.
1,2-Benzenedicarboxylic acid, di-C6-8-branched alkyl esters, C7-rich (DIHP)	71888-89-6	mg/kg	50	1000	N.D.	N.D.
1,2-Benzenedicarboxylic acid, di-C7-11-branched and linear alkyl esters (DHNUP)	68515-42-4	mg/kg	50	1000	N.D.	N.D.
Di-n-hexyl Phthalate(DHP)	84-75-3	mg/kg	50	1000	N.D.	N.D.
1,2-benzenedicarboxylic acid, diC6-10-alkyl esters or mixed decyl and hexyl and octyl diesters with ≥0.3% of dihexyl phthalate (EC No.201-559-5)	68515-51-5 68648-93-1	mg/kg	50	1000	N.D.	N.D.
Di-iso-nonyl phthalate (DINP)	28553-12-0	mg/kg	50	1000	N.D.	N.D.
Diisodecyl Phthalate (DIDP)	26761-40-0	mg/kg	50	1000	N.D.	N.D.
Di-n-octyl Phthalate(DNOP)	117-84-0	mg/kg	50	1000	N.D.	N.D.
Diethyl Phthalate(DEP)	84-66-2	mg/kg	50	1000	N.D.	N.D.
Dicyclohexyl phthalate (DCHP)	84-61-7	mg/kg	50	1000	N.D.	N.D.

Test item(s)	CAS No.	Unit	MDL	Client Limit	Result(s)	
					25+26+27	52+53+63



HONGKONG HUAXING INDUSTRIAL CO., LIMITED

Technical Report: **(9024)218-0336**

AUG 06, 2024

Page 52 of 90

Test item(s)	CAS No.	Unit	MDL	Client Limit	Result(s)	
					25+26+27	52+53+63
Benzyl butyl phthalate(BBP)	85-68-7	mg/kg	50	1000	N.D.	N.D.
Dibutyl phthalate (DBP)	84-74-2	mg/kg	50	1000	N.D.	N.D.
Di-2-ethylhexyl phthalate (DEHP)	117-81-7	mg/kg	50	1000	N.D.	N.D.
Diisobutyl phthalate(DIBP)	84-69-5	mg/kg	50	1000	N.D.	N.D.
Di(2-methoxyethyl) phthalate (DMEP)	117-82-8	mg/kg	50	1000	N.D.	N.D.
1,2-Benzenedicarboxylic acid, dipentylester, branched and linear(DPP)	131-18-0	mg/kg	50	1000	N.D.	N.D.
1,2-Benzenedicarboxylic acid, dihexyl ester, branched and linear	68515-50-4	mg/kg	50	1000	N.D.	N.D.
n-Pentyl –isopentylphthalate(nPiPP)	776297-69-9	mg/kg	50	1000	N.D.	N.D.
Diisopentyl phthalate(DIPP)	605-50-5	mg/kg	50	1000	N.D.	N.D.
1,2-Benzenedicarboxylic acid, dipentylester branched and linear	84777-06-0	mg/kg	50	1000	N.D.	N.D.
1,2-Benzenedicarboxylic acid, di-C6-8-branched alkyl esters, C7-rich (DIHP)	71888-89-6	mg/kg	50	1000	N.D.	N.D.
1,2-Benzenedicarboxylic acid, di-C7-11-branched and linear alkyl esters (DHNUP)	68515-42-4	mg/kg	50	1000	N.D.	N.D.
Di-n-hexyl Phthalate(DHP)	84-75-3	mg/kg	50	1000	N.D.	N.D.
1,2-benzenedicarboxylic acid, diC6-10-alkyl esters or mixed decyl and hexyl and octyl diesters with ≥0.3% of dihexyl phthalate (EC No.201-559-5)	68515-51-5 68648-93-1	mg/kg	50	1000	N.D.	N.D.
Di-iso-nonyl phthalate (DINP)	28553-12-0	mg/kg	50	1000	N.D.	N.D.
Diisodecyl Phthalate (DIDP)	26761-40-0	mg/kg	50	1000	N.D.	N.D.
Di-n-octyl Phthalate(DNOP)	117-84-0	mg/kg	50	1000	N.D.	N.D.
Diethyl Phthalate(DEP)	84-66-2	mg/kg	50	1000	N.D.	N.D.
Dicyclohexyl phthalate (DCHP)	84-61-7	mg/kg	50	1000	N.D.	N.D.



HONGKONG HUAXING INDUSTRIAL CO., LIMITED

Technical Report: **(9024)218-0336**

AUG 06, 2024

Page 53 of 90

Test item(s)	CAS No.	Unit	MDL	Client Limit	Result(s)	
					56+57+61	65+79+80
Benzyl butyl phthalate(BBP)	85-68-7	mg/kg	50	1000	N.D.	N.D.
Dibutyl phthalate (DBP)	84-74-2	mg/kg	50	1000	N.D.	N.D.
Di-2-ethylhexyl phthalate (DEHP)	117-81-7	mg/kg	50	1000	N.D.	N.D.
Diisobutyl phthalate(DIBP)	84-69-5	mg/kg	50	1000	N.D.	N.D.
Di(2-methoxyethyl) phthalate (DMEP)	117-82-8	mg/kg	50	1000	N.D.	N.D.
1,2-Benzenedicarboxylic acid, dipentylester, branched and linear(DPP)	131-18-0	mg/kg	50	1000	N.D.	N.D.
1,2-Benzenedicarboxylic acid, dihexyl ester, branched and linear	68515-50-4	mg/kg	50	1000	N.D.	N.D.
n-Pentyl –isopentylphthalate(nPiPP)	776297-69-9	mg/kg	50	1000	N.D.	N.D.
Diisopentyl phthalate(DIPP)	605-50-5	mg/kg	50	1000	N.D.	N.D.
1,2-Benzenedicarboxylic acid, dipentylester branched and linear	84777-06-0	mg/kg	50	1000	N.D.	N.D.
1,2-Benzenedicarboxylic acid, di-C6-8-branched alkyl esters, C7-rich (DIHP)	71888-89-6	mg/kg	50	1000	N.D.	N.D.
1,2-Benzenedicarboxylic acid, di-C7-11-branched and linear alkyl esters (DHNUP)	68515-42-4	mg/kg	50	1000	N.D.	N.D.
Di-n-hexyl Phthalate(DHP)	84-75-3	mg/kg	50	1000	N.D.	N.D.
1,2-benzenedicarboxylic acid, diC6-10-alkyl esters or mixed decyl and hexyl and octyl diesters with ≥0.3% of dihexyl phthalate (EC No.201-559-5)	68515-51-5 68648-93-1	mg/kg	50	1000	N.D.	N.D.
Di-iso-nonyl phthalate (DINP)	28553-12-0	mg/kg	50	1000	N.D.	N.D.
Diisodecyl Phthalate (DIDP)	26761-40-0	mg/kg	50	1000	N.D.	N.D.
Di-n-octyl Phthalate(DNOP)	117-84-0	mg/kg	50	1000	N.D.	N.D.
Diethyl Phthalate(DEP)	84-66-2	mg/kg	50	1000	N.D.	N.D.
Dicyclohexyl phthalate (DCHP)	84-61-7	mg/kg	50	1000	N.D.	N.D.

Test item(s)	CAS No.	Unit	MDL	Client	Result(s)
--------------	---------	------	-----	--------	-----------



HONGKONG HUAXING INDUSTRIAL CO.,LIMITED

Technical Report: **(9024)218-0336**

AUG 06, 2024

Page 54 of 90

				Limit	66+69+71	82+85+86
Benzyl butyl phthalate(BBP)	85-68-7	mg/kg	50	1000	N.D.	N.D.
Dibutyl phthalate (DBP)	84-74-2	mg/kg	50	1000	N.D.	N.D.
Di-2-ethylhexyl phthalate (DEHP)	117-81-7	mg/kg	50	1000	N.D.	N.D.
Diisobutyl phthalate(DIBP)	84-69-5	mg/kg	50	1000	N.D.	N.D.
Di(2-methoxyethy) phthalate (DMEP)	117-82-8	mg/kg	50	1000	N.D.	N.D.
1,2-Benzenedicarboxylic acid, dipentylester, branched and linear(DPP)	131-18-0	mg/kg	50	1000	N.D.	N.D.
1,2-Benzenedicarboxylic acid, dihexyl ester, branched and linear	68515-50-4	mg/kg	50	1000	N.D.	N.D.
n-Pentyl –isopentylphthalate(nPiPP)	776297-69-9	mg/kg	50	1000	N.D.	N.D.
Diisopentyl phthalate(DIPP)	605-50-5	mg/kg	50	1000	N.D.	N.D.
1,2-Benzenedicarboxylic acid, dipentylester branched and linear	84777-06-0	mg/kg	50	1000	N.D.	N.D.
1,2-Benzenedicarboxylic acid, di-C6-8-branched alkyl esters, C7-rich (DIHP)	71888-89-6	mg/kg	50	1000	N.D.	N.D.
1,2-Benzenedicarboxylic acid, di-C7-11-branched and linear alkyl esters (DHNUP)	68515-42-4	mg/kg	50	1000	N.D.	N.D.
Di-n-hexyl Phthalate(DHP)	84-75-3	mg/kg	50	1000	N.D.	N.D.
1,2-benzenedicarboxylic acid, diC6-10-alkyl esters or mixed decyl and hexyl and octyl diesters with ≥0.3% of dihexyl phthalate (EC No.201-559-5)	68515-51-5 68648-93-1	mg/kg	50	1000	N.D.	N.D.
Di-iso-nonyl phthalate (DINP)	28553-12-0	mg/kg	50	1000	N.D.	N.D.
Diisodecyl Phthalate (DIDP)	26761-40-0	mg/kg	50	1000	N.D.	N.D.
Di-n-octyl Phthalate(DNOP)	117-84-0	mg/kg	50	1000	N.D.	N.D.
Diethyl Phthalate(DEP)	84-66-2	mg/kg	50	1000	N.D.	N.D.
Dicyclohexyl phthalate (DCHP)	84-61-7	mg/kg	50	1000	N.D.	N.D.

Test item(s)	CAS No.	Unit	MDL	Client Limit	Result(s)	
					118+119	131+133 +134



HONGKONG HUAXING INDUSTRIAL CO., LIMITED

Technical Report: **(9024)218-0336**

AUG 06, 2024

Page 55 of 90

Test item(s)	CAS No.	Unit	MDL	Client Limit	Result(s)	
					118+119	131+133 +134
Benzyl butyl phthalate(BBP)	85-68-7	mg/kg	50	1000	N.D.	N.D.
Dibutyl phthalate (DBP)	84-74-2	mg/kg	50	1000	N.D.	N.D.
Di-2-ethylhexyl phthalate (DEHP)	117-81-7	mg/kg	50	1000	80	105
Diisobutyl phthalate(DIBP)	84-69-5	mg/kg	50	1000	N.D.	N.D.
Di(2-methoxyethy) phthalate (DMEP)	117-82-8	mg/kg	50	1000	N.D.	N.D.
1,2-Benzenedicarboxylic acid, dipentylester, branched and linear(DPP)	131-18-0	mg/kg	50	1000	N.D.	N.D.
1,2-Benzenedicarboxylic acid, dihexyl ester, branched and linear	68515-50-4	mg/kg	50	1000	N.D.	N.D.
n-Pentyl –isopentylphthalate(nPiPP)	776297-69-9	mg/kg	50	1000	N.D.	N.D.
Diisopentyl phthalate(DIPP)	605-50-5	mg/kg	50	1000	N.D.	N.D.
1,2-Benzenedicarboxylic acid, dipentylester branched and linear	84777-06-0	mg/kg	50	1000	N.D.	N.D.
1,2-Benzenedicarboxylic acid, di-C6-8-branched alkyl esters, C7-rich (DIHP)	71888-89-6	mg/kg	50	1000	N.D.	N.D.
1,2-Benzenedicarboxylic acid, di-C7-11-branched and linear alkyl esters (DHNUP)	68515-42-4	mg/kg	50	1000	N.D.	N.D.
Di-n-hexyl Phthalate(DHP)	84-75-3	mg/kg	50	1000	N.D.	N.D.
1,2-benzenedicarboxylic acid, diC6-10-alkyl esters or mixed decyl and hexyl and octyl diesters with ≥0.3% of dihexyl phthalate (EC No.201-559-5)	68515-51-5 68648-93-1	mg/kg	50	1000	N.D.	N.D.
Di-iso-nonyl phthalate (DINP)	28553-12-0	mg/kg	50	1000	N.D.	N.D.
Diisodecyl Phthalate (DIDP)	26761-40-0	mg/kg	50	1000	N.D.	N.D.
Di-n-octyl Phthalate(DNOP)	117-84-0	mg/kg	50	1000	N.D.	N.D.
Diethyl Phthalate(DEP)	84-66-2	mg/kg	50	1000	N.D.	N.D.
Dicyclohexyl phthalate (DCHP)	84-61-7	mg/kg	50	1000	N.D.	N.D.

Test item(s)	CAS No.	Unit	MDL	Client	Result(s)
--------------	---------	------	-----	--------	-----------



HONGKONG HUAXING INDUSTRIAL CO.,LIMITED

Technical Report: **(9024)218-0336**

AUG 06, 2024

Page 56 of 90

				Limit	137+138+139	144+145 +146
Benzyl butyl phthalate(BBP)	85-68-7	mg/kg	50	1000	N.D.	N.D.
Dibutyl phthalate (DBP)	84-74-2	mg/kg	50	1000	N.D.	N.D.
Di-2-ethylhexyl phthalate (DEHP)	117-81-7	mg/kg	50	1000	N.D.	N.D.
Diisobutyl phthalate(DIBP)	84-69-5	mg/kg	50	1000	N.D.	N.D.
Di(2-methoxyethy) phthalate (DMEP)	117-82-8	mg/kg	50	1000	N.D.	N.D.
1,2-Benzenedicarboxylic acid, dipentylester, branched and linear(DPP)	131-18-0	mg/kg	50	1000	N.D.	N.D.
1,2-Benzenedicarboxylic acid, dihexyl ester, branched and linear	68515-50-4	mg/kg	50	1000	N.D.	N.D.
n-Pentyl –isopentylphthalate(nPiPP)	776297-69-9	mg/kg	50	1000	N.D.	N.D.
Diisopentyl phthalate(DIPP)	605-50-5	mg/kg	50	1000	N.D.	N.D.
1,2-Benzenedicarboxylic acid, dipentylester branched and linear	84777-06-0	mg/kg	50	1000	N.D.	N.D.
1,2-Benzenedicarboxylic acid, di-C6-8-branched alkyl esters, C7-rich (DIHP)	71888-89-6	mg/kg	50	1000	N.D.	N.D.
1,2-Benzenedicarboxylic acid, di-C7-11-branched and linear alkyl esters (DHNUP)	68515-42-4	mg/kg	50	1000	N.D.	N.D.
Di-n-hexyl Phthalate(DHP)	84-75-3	mg/kg	50	1000	N.D.	N.D.
1,2-benzenedicarboxylic acid, diC6-10-alkyl esters or mixed decyl and hexyl and octyl diesters with ≥0.3% of dihexyl phthalate (EC No.201-559-5)	68515-51-5 68648-93-1	mg/kg	50	1000	N.D.	N.D.
Di-iso-nonyl phthalate (DINP)	28553-12-0	mg/kg	50	1000	N.D.	N.D.
Diisodecyl Phthalate (DIDP)	26761-40-0	mg/kg	50	1000	N.D.	N.D.
Di-n-octyl Phthalate(DNOP)	117-84-0	mg/kg	50	1000	N.D.	N.D.
Diethyl Phthalate(DEP)	84-66-2	mg/kg	50	1000	N.D.	N.D.
Dicyclohexyl phthalate (DCHP)	84-61-7	mg/kg	50	1000	N.D.	N.D.

Test item(s)	CAS No.	Unit	MDL	Client Limit	Result(s)	
					147+148	149



HONGKONG HUAXING INDUSTRIAL CO.,LIMITED

Technical Report: **(9024)218-0336**

AUG 06, 2024

Page 57 of 90

Test item(s)	CAS No.	Unit	MDL	Client Limit	Result(s)	
					147+148	149
Benzyl butyl phthalate(BBP)	85-68-7	mg/kg	50	1000	N.D.	N.D.
Dibutyl phthalate (DBP)	84-74-2	mg/kg	50	1000	N.D.	N.D.
Di-2-ethylhexyl phthalate (DEHP)	117-81-7	mg/kg	50	1000	N.D.	N.D.
Diisobutyl phthalate(DIBP)	84-69-5	mg/kg	50	1000	N.D.	N.D.
Di(2-methoxyethy) phthalate (DMEP)	117-82-8	mg/kg	50	1000	N.D.	N.D.
1,2-Benzenedicarboxylic acid, dipentylester, branched and linear(DPP)	131-18-0	mg/kg	50	1000	N.D.	N.D.
1,2-Benzenedicarboxylic acid, dihexyl ester, branched and linear	68515-50-4	mg/kg	50	1000	N.D.	N.D.
n-Pentyl –isopentylphthalate(nPiPP)	776297-69-9	mg/kg	50	1000	N.D.	N.D.
Diisopentyl phthalate(DIPP)	605-50-5	mg/kg	50	1000	N.D.	N.D.
1,2-Benzenedicarboxylic acid, dipentylester branched and linear	84777-06-0	mg/kg	50	1000	N.D.	N.D.
1,2-Benzenedicarboxylic acid, di-C6-8-branched alkyl esters, C7-rich (DIHP)	71888-89-6	mg/kg	50	1000	N.D.	N.D.
1,2-Benzenedicarboxylic acid, di-C7-11-branched and linear alkyl esters (DHNUP)	68515-42-4	mg/kg	50	1000	N.D.	N.D.
Di-n-hexyl Phthalate(DHP)	84-75-3	mg/kg	50	1000	N.D.	N.D.
1,2-benzenedicarboxylic acid, diC6-10-alkyl esters or mixed decyl and hexyl and octyl diesters with ≥0.3% of dihexyl phthalate (EC No.201-559-5)	68515-51-5 68648-93-1	mg/kg	50	1000	N.D.	N.D.
Di-iso-nonyl phthalate (DINP)	28553-12-0	mg/kg	50	1000	N.D.	N.D.
Diisodecyl Phthalate (DIDP)	26761-40-0	mg/kg	50	1000	N.D.	N.D.
Di-n-octyl Phthalate(DNOP)	117-84-0	mg/kg	50	1000	N.D.	N.D.
Diethyl Phthalate(DEP)	84-66-2	mg/kg	50	1000	N.D.	N.D.
Dicyclohexyl phthalate (DCHP)	84-61-7	mg/kg	50	1000	N.D.	N.D.

Test item(s)	CAS No.	Unit	MDL	Client	Result(s)
--------------	---------	------	-----	--------	-----------



HONGKONG HUAXING INDUSTRIAL CO., LIMITED

Technical Report: **(9024)218-0336**

AUG 06, 2024

Page 58 of 90

				Limit	155+156
Benzyl butyl phthalate(BBP)	85-68-7	mg/kg	50	1000	N.D.
Dibutyl phthalate (DBP)	84-74-2	mg/kg	50	1000	N.D.
Di-2-ethylhexyl phthalate (DEHP)	117-81-7	mg/kg	50	1000	N.D.
Diisobutyl phthalate(DIBP)	84-69-5	mg/kg	50	1000	N.D.
Di(2-methoxyethy) phthalate (DMEP)	117-82-8	mg/kg	50	1000	N.D.
1,2-Benzenedicarboxylic acid, dipentylester, branched and linear(DPP)	131-18-0	mg/kg	50	1000	N.D.
1,2-Benzenedicarboxylic acid, dihexyl ester, branched and linear	68515-50-4	mg/kg	50	1000	N.D.
n-Pentyl –isopentylphthalate(nPiPP)	776297-69-9	mg/kg	50	1000	N.D.
Diisopentyl phthalate(DIPP)	605-50-5	mg/kg	50	1000	N.D.
1,2-Benzenedicarboxylic acid, dipentylester branched and linear	84777-06-0	mg/kg	50	1000	N.D.
1,2-Benzenedicarboxylic acid, di-C6-8-branched alkyl esters, C7-rich (DIHP)	71888-89-6	mg/kg	50	1000	N.D.
1,2-Benzenedicarboxylic acid, di-C7-11-branched and linear alkyl esters (DHNUP)	68515-42-4	mg/kg	50	1000	N.D.
Di-n-hexyl Phthalate(DHP)	84-75-3	mg/kg	50	1000	N.D.
1,2-benzenedicarboxylic acid, diC6-10-alkyl esters or mixed decyl and hexyl and octyl diesters with ≥0.3% of dihexyl phthalate (EC No.201-559-5)	68515-51-5 68648-93-1	mg/kg	50	1000	N.D.
Di-iso-nonyl phthalate (DINP)	28553-12-0	mg/kg	50	1000	N.D.
Diisodecyl Phthalate (DIDP)	26761-40-0	mg/kg	50	1000	N.D.
Di-n-octyl Phthalate(DNOP)	117-84-0	mg/kg	50	1000	N.D.
Diethyl Phthalate(DEP)	84-66-2	mg/kg	50	1000	N.D.
Dicyclohexyl phthalate (DCHP)	84-61-7	mg/kg	50	1000	N.D.



HONGKONG HUAXING INDUSTRIAL CO., LIMITED

Technical Report: **(9024)218-0336**

AUG 06, 2024

Page 59 of 90

(22) Short Chain Chlorinated Paraffin content - the Persistent Organic Pollutants (POPs) Regulation (EU) 2019/1021.

Test Method: In-house method

Test Instrument: Gas Chromatography-Mass Spectrometer (GC-MS)

Test item(s)	Unit	MDL	Limit	Result(s)		
				16	22+23+24	25+26+27
Short Chain Chlorinated Paraffin (SCCP)	mg/kg	50	1500	N.D.	N.D.	N.D.

Test item(s)	Unit	MDL	Limit	Result(s)		
				52+53+63	56+57+61	65+79+80
Short Chain Chlorinated Paraffin (SCCP)	mg/kg	50	1500	N.D.	N.D.	N.D.

Test item(s)	Unit	MDL	Limit	Result(s)		
				66+69+71	82+85+86	118+119
Short Chain Chlorinated Paraffin (SCCP)	mg/kg	50	1500	N.D.	N.D.	N.D.

Test item(s)	Unit	MDL	Limit	Result(s)		
				131+133 +134	144+145 +146	147+148
Short Chain Chlorinated Paraffin (SCCP)	mg/kg	50	1500	N.D.	N.D.	N.D.

Test item(s)	Unit	MDL	Limit	Result(s)	
				149	155+156
Short Chain Chlorinated Paraffin (SCCP)	mg/kg	50	1500	N.D.	N.D.



HONGKONG HUAXING INDUSTRIAL CO.,LIMITED

Technical Report: **(9024)218-0336**

AUG 06, 2024

Page 60 of 90

(23) Specific Migration of Phenol Content- Directive 2009/48/EC and its amendment Directive (EU) 2017/774.

Test Method: With reference to EN71-10: 2005& EN71-11: 2005

Test Instrument: High Performance Liquid Chromatography- fluorescence detector (HPLC-FLD)

Test item(s)	Unit	MDL	Limit	Result(s)	
				1+2+3	137+138+139
Specific Migration of Phenol	mg/L	5	5	N.D.	N.D.

Test item(s)	Unit	MDL	Limit	Result(s)	
				147+148	149
Specific Migration of Phenol	mg/L	5	5	N.D.	N.D.

(24) TCEP, TCPP, TDCP content - Directive (EU) 2009/48/EC & its amendment Directive 2014/79/EU

Test Method: In-house method

Test Instrument: Gas Chromatography-Mass Spectrometer (GC-MS)

Test item(s)	Unit	MDL	Limit	Result(s)
				1+2+3
Tris(2-chloroethyl) phosphate (TCEP)	mg/kg	0.5	5	N.D.
Tris-(2-chloroisopropyl) phosphate (TCPP)	mg/kg	0.5	5	N.D.
Tris(1,3-dichloroisopropyl)phosphate(TDCP)	mg/kg	0.5	5	N.D.

Test item(s)	Unit	MDL	Limit	Result(s)
				4+5
Tris(2-chloroethyl) phosphate (TCEP)	mg/kg	0.5	5	N.D.
Tris-(2-chloroisopropyl) phosphate (TCPP)	mg/kg	0.5	5	N.D.
Tris(1,3-dichloroisopropyl)phosphate(TDCP)	mg/kg	0.5	5	N.D.



HONGKONG HUAXING INDUSTRIAL CO.,LIMITED

Technical Report: **(9024)218-0336**

AUG 06, 2024

Page 61 of 90

Test item(s)	Unit	MDL	Limit	Result(s)
				6+7+8
Tris(2-chloroethyl) phosphate (TCEP)	mg/kg	0.5	5	N.D.
Tris-(2-chloroisopropyl) phosphate (TCPP)	mg/kg	0.5	5	N.D.
Tris(1,3-dichloroisopropyl)phosphate(TDCP)	mg/kg	0.5	5	N.D.

Test item(s)	Unit	MDL	Limit	Result(s)
				137+138+139
Tris(2-chloroethyl) phosphate (TCEP)	mg/kg	0.5	5	N.D.
Tris-(2-chloroisopropyl) phosphate (TCPP)	mg/kg	0.5	5	N.D.
Tris(1,3-dichloroisopropyl)phosphate(TDCP)	mg/kg	0.5	5	N.D.

Test item(s)	Unit	MDL	Limit	Result(s)
				140+141+142
Tris(2-chloroethyl) phosphate (TCEP)	mg/kg	0.5	5	N.D.
Tris-(2-chloroisopropyl) phosphate (TCPP)	mg/kg	0.5	5	N.D.
Tris(1,3-dichloroisopropyl)phosphate(TDCP)	mg/kg	0.5	5	N.D.

Test item(s)	Unit	MDL	Limit	Result(s)
				143+153+154
Tris(2-chloroethyl) phosphate (TCEP)	mg/kg	0.5	5	N.D.
Tris-(2-chloroisopropyl) phosphate (TCPP)	mg/kg	0.5	5	N.D.
Tris(1,3-dichloroisopropyl)phosphate(TDCP)	mg/kg	0.5	5	N.D.

Test item(s)	Unit	MDL	Limit	Result(s)
				147+148
Tris(2-chloroethyl) phosphate (TCEP)	mg/kg	0.5	5	N.D.
Tris-(2-chloroisopropyl) phosphate (TCPP)	mg/kg	0.5	5	N.D.
Tris(1,3-dichloroisopropyl)phosphate(TDCP)	mg/kg	0.5	5	N.D.

Test item(s)	Unit	MDL	Limit	Result(s)
--------------	------	-----	-------	-----------



HONGKONG HUAXING INDUSTRIAL CO., LIMITED

Technical Report: **(9024)218-0336**

AUG 06, 2024

Page 63 of 90

Formaldehyde Migration	mg/kg	16	30	N.D.	N.D.	N.D.	N.D.
------------------------	-------	----	----	------	------	------	------

Test item(s)	Unit	MDL	Limit	Result(s)	
				153	154
Formaldehyde Migration	mg/kg	16	30	N.D.	N.D.

(26)Azo colorants content - Item 43 of Annex XVII of the REACH Regulation (EC) NO. 1907/2006 & amendment (EC) No 552/2009 and 126/2013.

Test Method: ISO 14362-1:2017

Test Instrument: Gas Chromatography-Mass Spectrometer (GC-MS)

No.	Test item(s)	CAS No.	Unit	MDL	Limit	Result(s)	
						6+7+8	9+10+11
1	Biphenyl-4-ylamine/ 4-aminobiphenyl/xenylamine	92-67-1	mg/kg	5	30	N.D.	N.D.
2	Benzidine	92-87-5	mg/kg	5	30	N.D.	N.D.
3	4-chloro-o-toluidine	95-69-2	mg/kg	5	30	N.D.	N.D.
4	2-naphthylamine	91-59-8	mg/kg	5	30	N.D.	N.D.
5	o-aminoazotoluene/4-o-tolyazao-o-toluidine /4-amino-2',3-dimethylazobenzene*	97-56-3	mg/kg	5	30	N.D.	N.D.
6	5-nitro-o-toluidine/2-amino-4-nitrotoluol*	99-55-8	mg/kg	5	30	N.D.	N.D.
7	4-chloroaniline	106-47-8	mg/kg	5	30	N.D.	N.D.
8	4-methoxy-m-phenylenediamine/ 2,4-diaminoanisole	615-05-4	mg/kg	5	30	N.D.	N.D.
9	4,4'-methylenedianiline/ 4,4'-diaminodiphenylmethane	101-77-9	mg/kg	5	30	N.D.	N.D.
10	3,3'-dichlorobenzidine/ 3,3'-dichlorobiphenyl-4,4'-ylenediamine	91-94-1	mg/kg	5	30	N.D.	N.D.
11	3,3'-dimethoxybenzidine/o-dianisidine	119-90-4	mg/kg	5	30	N.D.	N.D.
12	3,3'-dimethylbenzidine/4,4'-bi-o-toluidine	119-93-7	mg/kg	5	30	N.D.	N.D.
13	4,4'-methylenedi-o-toluidine	838-88-0	mg/kg	5	30	N.D.	N.D.
14	6-methoxy-m-toluidine/p-cresidine	120-71-8	mg/kg	5	30	N.D.	N.D.
15	4,4'-methylene-bis-(2-chloro-aniline)/ 2,2'-dichloro-4,4'-methylene-dianiline	101-14-4	mg/kg	5	30	N.D.	N.D.
16	4,4'-oxydianiline	101-80-4	mg/kg	5	30	N.D.	N.D.
17	4,4'-thiodianiline	139-65-1	mg/kg	5	30	N.D.	N.D.
18	o-toluidine/2-aminotoluene	95-53-4	mg/kg	5	30	N.D.	N.D.



HONGKONG HUAXING INDUSTRIAL CO., LIMITED

Technical Report: **(9024)218-0336**

AUG 06, 2024

Page 64 of 90

No.	Test item(s)	CAS No.	Unit	MDL	Limit	Result(s)	
						6+7+8	9+10+11
19	2,4-diaminotoluene/2,4-toluyldiamine/ 4-methyl-m-phenylenediamine	95-80-7	mg/kg	5	30	N.D.	N.D.
20	2,4,5-trimethylaniline	137-17-7	mg/kg	5	30	N.D.	N.D.
21	o-anisidine/2-methoxyaniline	90-04-0	mg/kg	5	30	N.D.	N.D.
22	4-aminoazobenzene**	60-09-3	mg/kg	5	30	N.D.	N.D.

No.	Test item(s)	CAS No.	Unit	MDL	Limit	Result(s)	
						140+141 +142	150+151
1	Biphenyl-4-ylamine/ 4-aminobiphenyl/xenylamine	92-67-1	mg/kg	5	30	N.D.	N.D.
2	Benzidine	92-87-5	mg/kg	5	30	N.D.	N.D.
3	4-chloro-o-toluidine	95-69-2	mg/kg	5	30	N.D.	N.D.
4	2-naphthylamine	91-59-8	mg/kg	5	30	N.D.	N.D.
5	o-aminoazotoluene/4-o-tolyazao-o-toluidine /4-amino-2',3-dimethylazobenzene*	97-56-3	mg/kg	5	30	N.D.	N.D.
6	5-nitro-o-toluidine/2-amino-4-nitrotoluol*	99-55-8	mg/kg	5	30	N.D.	N.D.
7	4-chloroaniline	106-47-8	mg/kg	5	30	N.D.	N.D.
8	4-methoxy-m-phenylenediamine/ 2,4-diaminoanisole	615-05-4	mg/kg	5	30	N.D.	N.D.
9	4,4'-methylenedianiline/ 4,4'-diaminodiphenylmethane	101-77-9	mg/kg	5	30	N.D.	N.D.
10	3,3'-dichlorobenzidine/ 3,3'-dichlorobiphenyl-4,4'-ylenediamine	91-94-1	mg/kg	5	30	N.D.	N.D.
11	3,3'-dimethoxybenzidine/o-dianisidine	119-90-4	mg/kg	5	30	N.D.	N.D.
12	3,3'-dimethylbenzidine/4,4'-bi-o-toluidine	119-93-7	mg/kg	5	30	N.D.	N.D.
13	4,4'-methylenedi-o-toluidine	838-88-0	mg/kg	5	30	N.D.	N.D.
14	6-methoxy-m-toluidine/p-cresidine	120-71-8	mg/kg	5	30	N.D.	N.D.
15	4,4'-methylene-bis-(2-chloro-aniline)/ 2,2'-dichloro-4,4'-methylene-dianiline	101-14-4	mg/kg	5	30	N.D.	N.D.
16	4,4'-oxydianiline	101-80-4	mg/kg	5	30	N.D.	N.D.
17	4,4'-thiodianiline	139-65-1	mg/kg	5	30	N.D.	N.D.
18	o-toluidine/2-aminotoluene	95-53-4	mg/kg	5	30	N.D.	N.D.
19	2,4-diaminotoluene/2,4-toluyldiamine/ 4-methyl-m-phenylenediamine	95-80-7	mg/kg	5	30	N.D.	N.D.



HONGKONG HUAXING INDUSTRIAL CO., LIMITED

Technical Report: **(9024)218-0336**

AUG 06, 2024

Page 65 of 90

No.	Test item(s)	CAS No.	Unit	MDL	Limit	Result(s)	
						140+141 +142	150+151
20	2,4,5-trimethylaniline	137-17-7	mg/kg	5	30	N.D.	N.D.
21	o-anisidine/2-methoxyaniline	90-04-0	mg/kg	5	30	N.D.	N.D.
22	4-aminoazobenzene**	60-09-3	mg/kg	5	30	N.D.	N.D.

No.	Test item(s)	CAS No.	Unit	MDL	Limit	Result(s)	
						152	
1	Biphenyl-4-ylamine/ 4-aminobiphenyl/xenylamine	92-67-1	mg/kg	5	30	N.D.	
2	Benzidine	92-87-5	mg/kg	5	30	N.D.	
3	4-chloro-o-toluidine	95-69-2	mg/kg	5	30	N.D.	
4	2-naphthylamine	91-59-8	mg/kg	5	30	N.D.	
5	o-aminoazotoluene/4-o-tolyazo-o-toluidine /4-amino-2',3-dimethylazobenzene*	97-56-3	mg/kg	5	30	N.D.	
6	5-nitro-o-toluidine/2-amino-4-nitrotoluol*	99-55-8	mg/kg	5	30	N.D.	
7	4-chloroaniline	106-47-8	mg/kg	5	30	N.D.	
8	4-methoxy-m-phenylenediamine/ 2,4-diaminoanisole	615-05-4	mg/kg	5	30	N.D.	
9	4,4'-methylenedianiline/ 4,4'-diaminodiphenylmethane	101-77-9	mg/kg	5	30	N.D.	
10	3,3'-dichlorobenzidine/ 3,3'-dichlorobiphenyl-4,4'-ylenediamine	91-94-1	mg/kg	5	30	N.D.	
11	3,3'-dimethoxybenzidine/o-dianisidine	119-90-4	mg/kg	5	30	N.D.	
12	3,3'-dimethylbenzidine/4,4'-bi-o-toluidine	119-93-7	mg/kg	5	30	N.D.	
13	4,4'-methylenedi-o-toluidine	838-88-0	mg/kg	5	30	N.D.	
14	6-methoxy-m-toluidine/p-cresidine	120-71-8	mg/kg	5	30	N.D.	
15	4,4'-methylene-bis-(2-chloro-aniline)/ 2,2'-dichloro-4,4'-methylene-dianiline	101-14-4	mg/kg	5	30	N.D.	
16	4,4'-oxydianiline	101-80-4	mg/kg	5	30	N.D.	
17	4,4'-thiodianiline	139-65-1	mg/kg	5	30	N.D.	
18	o-toluidine/2-aminotoluene	95-53-4	mg/kg	5	30	N.D.	
19	2,4-diaminotoluene/2,4-toluyldiamine/ 4-methyl-m-phenylenediamine	95-80-7	mg/kg	5	30	N.D.	



HONGKONG HUAXING INDUSTRIAL CO., LIMITED

Technical Report: **(9024)218-0336**

AUG 06, 2024

Page 66 of 90

No.	Test item(s)	CAS No.	Unit	MDL	Limit	Result(s)
						152
20	2,4,5-trimethylaniline	137-17-7	mg/kg	5	30	N.D.
21	o-anisidine/2-methoxyaniline	90-04-0	mg/kg	5	30	N.D.
22	4-aminoazobenzene**	60-09-3	mg/kg	5	30	N.D.

Remark:

- *The amines o-aminoazotoluene (No 5, CAS No.97-56-3) and 2-amino-4-nitrotoluene (No 6, CAS No.99-55-8) are further reduced to o-toluidine (No 18, CAS No. 95-53-4) and 2, 4-diaminotoluene (No 19, CAS No. 95-80-7).
- **Azo colorants that are able to form 4-aminoazobenzene (No 22, CAS No. 60-09-3) generate, under the condition of this method, aniline (CAS No. 62-53-3) and 1, 4-phenyldiamine (CAS No. 106-50-3). Due to detection limits, only aniline may be detected. If aniline is detected above 5mg/kg, then the presence of these colorants should be tested by ISO 14362-3:2017.



HONGKONG HUAXING INDUSTRIAL CO.,LIMITED

Technical Report: **(9024)218-0336**

AUG 06, 2024

Page 67 of 90

(27) Pentachlorophenol(PCP) content - the Persistent Organic Pollutants (POPs) Regulation (EU) 2019/1021 and its amendment Directive (EU) 2021/277.

Test Method: In-house Method

Test Instrument: Gas Chromatography-Mass Spectrometer (GC-MS)

Test item(s)	Unit	MDL	Limit	Result(s)	
				6+7+8	140+141+142
Pentachlorophenol(PCP)	mg/kg	0.1	5	N.D.	N.D.

Test item(s)	Unit	MDL	Limit	Result(s)	
				143+153+154	150+151
Pentachlorophenol(PCP)	mg/kg	0.1	5	N.D.	N.D.

Test item(s)	Unit	MDL	Limit	Result(s)	
				152	
Pentachlorophenol(PCP)	mg/kg	0.1	5	N.D.	

(28) Extractable Lead, Cadmium, Hexavalent Chromium, Arsenic content content - Item 72 of Annex XVII of REACH Regulation (EC) 1907/2006& amendment (EU) No 2018/1513.

Test Method: In-house method

Test Instrument: Inductively Coupled Plasma Mass Spectrometer (ICP-MS)

Test item(s)	CAS No.	Unit	MDL	Limit	Result(s)
					6+7+8
Extractable Lead	/	mg/kg	0.1	1	N.D.
Extractable Cadmium	/	mg/kg	0.1	1	N.D.
Extractable Hexavalent Chromium	/	mg/kg	0.1	1	N.D.
Extractable Arsenic	/	mg/kg	0.1	1	N.D.



HONGKONG HUAXING INDUSTRIAL CO., LIMITED

Technical Report: **(9024)218-0336**

AUG 06, 2024

Page 68 of 90

Test item(s)	CAS No.	Unit	MDL	Limit	Result(s)
					140+141+142
Extractable Lead	/	mg/kg	0.1	1	N.D.
Extractable Cadmium	/	mg/kg	0.1	1	N.D.
Extractable Hexavalent Chromium	/	mg/kg	0.1	1	N.D.
Extractable Arsenic	/	mg/kg	0.1	1	N.D.

Test item(s)	CAS No.	Unit	MDL	Limit	Result(s)
					143+153+154
Extractable Lead	/	mg/kg	0.1	1	N.D.
Extractable Cadmium	/	mg/kg	0.1	1	N.D.
Extractable Hexavalent Chromium	/	mg/kg	0.1	1	N.D.
Extractable Arsenic	/	mg/kg	0.1	1	N.D.

Test item(s)	CAS No.	Unit	MDL	Limit	Result(s)
					150+151
Extractable Lead	/	mg/kg	0.1	1	N.D.
Extractable Cadmium	/	mg/kg	0.1	1	N.D.
Extractable Hexavalent Chromium	/	mg/kg	0.1	1	N.D.
Extractable Arsenic	/	mg/kg	0.1	1	N.D.

Test item(s)	CAS No.	Unit	MDL	Limit	Result(s)
					152
Extractable Lead	/	mg/kg	0.1	1	N.D.
Extractable Cadmium	/	mg/kg	0.1	1	N.D.
Extractable Hexavalent Chromium	/	mg/kg	0.1	1	N.D.
Extractable Arsenic	/	mg/kg	0.1	1	N.D.



HONGKONG HUAXING INDUSTRIAL CO., LIMITED

Technical Report: **(9024)218-0336**

AUG 06, 2024

Page 69 of 90

(29)Benzene content- Item 72 of Annex XVII of REACH Regulation (EC) NO. 1907/2006 & amendment (EU) No 2018/1513.

Test Method: In-house method

Test Instrument: Gas Chromatography-Mass Spectrometer (GC-MS)

Test item(s)	CAS. No.	Unit	MDL	Limit	Result(s)
					1+2+3
Benzene	71-43-2	mg/kg	1	5	N.D.

Test item(s)	CAS. No.	Unit	MDL	Limit	Result(s)
					137+138+139
Benzene	71-43-2	mg/kg	1	5	N.D.

Test item(s)	CAS. No.	Unit	MDL	Limit	Result(s)
					140+141+142
Benzene	71-43-2	mg/kg	1	5	N.D.

Test item(s)	CAS. No.	Unit	MDL	Limit	Result(s)
					143+153+154
Benzene	71-43-2	mg/kg	1	5	N.D.

Test item(s)	CAS. No.	Unit	MDL	Limit	Result(s)
					147+148
Benzene	71-43-2	mg/kg	1	5	N.D.

Test item(s)	CAS. No.	Unit	MDL	Limit	Result(s)
					149
Benzene	71-43-2	mg/kg	1	5	N.D.



HONGKONG HUAXING INDUSTRIAL CO.,LIMITED

Technical Report: **(9024)218-0336**

AUG 06, 2024

Page 70 of 90

Test item(s)	CAS. No.	Unit	MDL	Limit	Result(s)
					150+151
Benzene	71-43-2	mg/kg	1	5	N.D.

Test item(s)	CAS. No.	Unit	MDL	Limit	Result(s)
					152
Benzene	71-43-2	mg/kg	1	5	N.D.

(30)Aniline content - Directive (EU) 2009/48/EC & its amendment Directive (EU) 2021/903

Test Method: In-house method

Test Instrument: Gas Chromatography-Mass Spectrometer (GC-MS)

Test item(s)	Unit	MDL	Limit	Result(s)		
				6+7+8	9+10+11	12
Aniline	mg/kg	5	30	N.D.	N.D.	N.D.

Test item(s)	Unit	MDL	Limit	Result(s)		
				140+141+142	143+153+154	150+151
Aniline	mg/kg	5	30	N.D.	N.D.	N.D.

Test item(s)	Unit	MDL	Limit	Result(s)
				152
Aniline	mg/kg	5	30	N.D.

(31)RoHS Directive 2011/65/EU and its amendment directives Screening by X-ray fluorescence spectrometry

Test item(s)

Test Method

Test Instrument

Lead, mercury, cadmium, chromium and bromine

IEC 62321-3-1:2013

X-ray fluorescence spectrometry

Seq.	Tested Part(s)	Result(s)
------	----------------	-----------



HONGKONG HUAXING INDUSTRIAL CO., LIMITED

Technical Report: **(9024)218-0336**

AUG 06, 2024

Page 71 of 90

No.		Pb	Cd	Hg	Cr	Br
1	Transparent grey plastic, shell	BL	BL	BL	BL	BL
2	Pale grey plastic, button	BL	BL	BL	BL	BL
3	Black plastic, battery cover/slider	BL	BL	BL	BL	BL
4	Black plastic, trick wheel	BL	BL	BL	BL	BL
5	Translucent plastic, hook tape Velcro	BL	BL	BL	BL	BL
6	Grey plush, body	BL	BL	BL	BL	BL
7	Beige white flannel, body	BL	BL	BL	BL	BL
8	Brown fabric, mouth/feet	BL	BL	BL	BL	BL
9	White/dark blue/yellow green/grey white fabric, label	BL	BL	BL	BL	BL
10	White/green fabric, label	BL	BL	BL	BL	BL
11	White/black fabric, label	BL	BL	BL	BL	BL
12	White fabric, belly	BL	BL	BL	BL	BL
13	Black embroidery, eyes	BL	BL	BL	BL	BL
14	White embroidery, eyes	BL	BL	BL	BL	BL
15	Silvery metal, screw of battery cover	BL	BL	BL	BL	NA
16	Black EVA with adhesive, pad/washer	BL	BL	BL	BL	BL
17	White felt, interlining banding	BL	BL	BL	BL	BL
18	White fiber, stuffing	BL	BL	BL	BL	BL
19	Silvery metal, screw	BL	BL	BL	BL	NA
20	Silvery metal, medium screw	BL	BL	BL	BL	NA
21	Silvery metal, big screw	BL	BL	BL	BL	NA
22	Translucent plastic, glue	BL	BL	BL	BL	BL
23	Black plastic, frame	BL	BL	BL	BL	BL
24	Pale grey plastic, frame	BL	BL	BL	BL	BL
25	Transparent grey plastic, LED shade	BL	BL	BL	BL	BL
26	Black plastic, holder of LED shade	BL	BL	BL	BL	BL
27	Beige plastic, motor holder	BL	BL	BL	BL	BL
28	Silvery metal, screw of motor holder	BL	BL	BL	X	NA
29	Silvery metal, big shaft of motor	BL	BL	BL	BL	NA



HONGKONG HUAXING INDUSTRIAL CO., LIMITED

Technical Report: **(9024)218-0336**

AUG 06, 2024

Page 72 of 90

Seq. No.	Tested Part(s)	Result(s)				
		Pb	Cd	Hg	Cr	Br
30	White plastic, gear of motor	BL	BL	BL	BL	BL
31	Beige plastic, gear of motor	BL	BL	BL	BL	BL
32	Light blue plastic, gear of motor	BL	BL	BL	BL	BL
33	Silvery metal, shaft of gear, motor	BL	BL	BL	BL	NA
34	Silvery metal, cover of motor	BL	BL	BL	BL	NA
35	Dark grey plastic, magnet of motor	BL	BL	BL	BL	BL
36	Coppery metal, bearing of motor	BL	BL	BL	BL	NA
37	Silvery metal, shaft of motor	BL	BL	BL	X	NA
38	Blue plastic, washer of motor	BL	BL	BL	BL	BL
39	White plastic, insulation sheet of motor	BL	BL	BL	BL	BL
40	Silvery metal, sheet of motor	BL	BL	BL	X	NA
41	Coppery metal, coil of motor	BL	BL	BL	BL	NA
42	Translucent plastic, commutator of motor	BL	BL	BL	BL	BL
43	Black ceramic, core of commutator	BL	BL	BL	BL	BL
44	Silvery solder, core of commutator	BL	BL	BL	BL	NA
45	Silvery metal, bar of commutator	BL	BL	BL	BL	NA
46	Grey paper, washer of commutator	BL	BL	BL	BL	BL
47	Silvery metal, cap of motor	BL	BL	BL	BL	NA
48	Translucent plastic, cap of motor	BL	BL	BL	BL	BL
49	Silvery metal, brush of motor	BL	BL	BL	BL	NA
50	Silvery metal, connector of motor	BL	BL	BL	BL	NA
51	Silvery solder, connector of motor	BL	BL	BL	BL	NA
52	Black soft plastic, wire jacket of motor	BL	BL	BL	BL	BL
53	Red soft plastic, wire jacket of motor	BL	BL	BL	BL	BL
54	Coppery metal, wire of motor	BL	BL	BL	BL	NA
55	Silvery metal, cover of speaker	BL	BL	BL	BL	NA
56	Black plastic, ring of speaker	BL	BL	BL	BL	BL
57	Black plastic with glue, diaphragm of speaker	BL	BL	BL	BL	BL



HONGKONG HUAXING INDUSTRIAL CO., LIMITED

Technical Report: **(9024)218-0336**

AUG 06, 2024

Page 73 of 90

Seq. No.	Tested Part(s)	Result(s)				
		Pb	Cd	Hg	Cr	Br
58	Coppery metal, coil of speaker	BL	BL	BL	BL	NA
59	Silvery metal, plate of speaker	BL	BL	BL	BL	NA
60	Silvery metal, magnet of speaker	BL	BL	BL	X	NA
61	Green coated brown plastic with coppery metal, PCB of speaker	BL	BL	BL	BL	BL
62	Silvery solder, PCB of speaker	BL	BL	BL	BL	NA
63	White soft plastic, wire jacket of speaker and MIC	BL	BL	BL	BL	BL
64	Coppery metal, wire core of speaker and MIC	BL	BL	BL	BL	NA
65	Red soft plastic, wire jacket of MIC	BL	BL	BL	BL	BL
66	Black fabric with adhesive, dust gauze of MIC	BL	BL	BL	BL	BL
67	Silvery metal, cover of MIC	BL	BL	BL	BL	NA
68	White plastic, inner cover of MIC	BL	BL	BL	BL	BL
69	White plastic, ring of MIC	BL	BL	BL	BL	BL
70	Silvery metal, ring of MIC	BL	BL	BL	BL	NA
71	Silvery plastic, film of MIC	BL	BL	BL	BL	BL
72	Silvery metal, plate of MIC	BL	BL	BL	BL	NA
73	Black body, transistor of MIC	BL	BL	BL	BL	X
74	Green coated brown plastic with coppery metal, PCB of MIC	BL	BL	BL	BL	BL
75	Silvery solder, PCB of MIC	BL	BL	BL	BL	NA
76	Transparent body, LED of LED PCB	BL	BL	BL	BL	BL
77	White / green coated brown plastic with coppery metal, LED PCB	BL	BL	BL	BL	BL
78	Silvery solder, LED PCB	BL	BL	BL	BL	NA
79	White soft plastic, wire jacket of LED PCB	BL	BL	BL	BL	BL
80	Red soft plastic, wire jacket of LED PCB	BL	BL	BL	BL	BL
81	Coppery metal, wire core of LED PCB	BL	BL	BL	BL	NA
82	Translucent / black soft plastic, button of button PCB	BL	BL	BL	BL	BL
83	White printed green coated brown plastic with coppery metal, button PCB	BL	BL	BL	BL	BL
84	Silvery solder, button PCB	BL	BL	BL	BL	NA
85	Black soft plastic, wire jacket of flat cable	BL	BL	BL	BL	BL



HONGKONG HUAXING INDUSTRIAL CO., LIMITED

Technical Report: **(9024)218-0336**

AUG 06, 2024

Page 74 of 90

Seq. No.	Tested Part(s)	Result(s)				
		Pb	Cd	Hg	Cr	Br
86	Red soft plastic, wire jacket of flat cable	BL	BL	BL	BL	BL
87	Coppery metal, wire core of flat cable	BL	BL	BL	BL	NA
88	Translucent body, LED of switch PCB	BL	BL	BL	BL	BL
89	Silvery metal, pin of LED, switch PCB	BL	BL	BL	X	NA
90	Translucent plastic, pin holder of LED, switch PCB	BL	BL	BL	BL	BL
91	Silvery metal, cover of socket, switch PCB	BL	BL	BL	X	NA
92	Black plastic, pin holder of socket, switch PCB	BL	BL	BL	BL	BL
93	Silvery metal, pin of socket, switch PCB	BL	BL	BL	BL	NA
94	Black plastic, slide of switch, switch PCB	BL	BL	BL	BL	BL
95	Silvery metal, cover of switch, switch PCB	BL	BL	BL	BL	NA
96	Silvery metal, contact plate of switch, switch PCB	BL	BL	BL	BL	NA
97	Silvery metal, clip of switch, switch PCB	BL	BL	BL	BL	NA
98	Brown plastic, board of switch, switch PCB	BL	BL	BL	BL	BL
99	Silvery metal, pin of switch, switch PCB	BL	BL	BL	BL	NA
100	Black body, SMD transistor of switch PCB & main PCB	BL	BL	BL	BL	BL
101	Black body, SMD diode of switch PCB	BL	BL	BL	BL	BL
102	Black / white body, SMD resistor of switch PCB & main PCB	BL	BL	BL	BL	BL
103	White printed green coated brown plastic with coppery metal, switch PCB	BL	BL	BL	BL	BL
104	Silvery solder, switch PCB	X	BL	BL	BL	NA
105	Black body, big IC of main PCB	BL	BL	BL	BL	BL
106	Black body, small IC of main PCB	BL	BL	BL	BL	BL
107	Brown body, SMD capacitor of main PCB	#	BL	BL	BL	X
108	White printed green coated brown plastic with coppery metal, main PCB	BL	BL	BL	BL	BL
109	Silvery solder, main PCB	BL	BL	BL	BL	NA
110	Silvery metal, contact plate of trick wheel	BL	BL	BL	BL	NA
111	Green / black coated translucent plastic with coppery metal, volume PCB	BL	BL	BL	BL	X
112	Silvery metal, contact plate of volume PCB	BL	BL	BL	BL	NA



HONGKONG HUAXING INDUSTRIAL CO., LIMITED

Technical Report: **(9024)218-0336**

AUG 06, 2024

Page 75 of 90

Seq. No.	Tested Part(s)	Result(s)				
		Pb	Cd	Hg	Cr	Br
113	Green coated brown plastic with coppery metal, volume PCB	BL	BL	BL	BL	BL
114	Silvery solder, volume PCB	BL	BL	BL	BL	NA
115	Black plastic, sleeve of connector	BL	BL	BL	BL	BL
116	White plastic, connector	BL	BL	BL	BL	BL
117	Silvery metal, connector pin	BL	BL	BL	BL	NA
118	Black soft plastic, connecting line	BL	BL	BL	BL	BL
119	Red soft plastic, connecting line	BL	BL	BL	BL	BL
120	Coppery metal, wire	BL	BL	BL	BL	NA
121	Black printed blue plastic, sleeve of battery	BL	BL	BL	BL	BL
122	Green paper with adhesive, insulator of battery	BL	BL	BL	BL	BL
123	Black plastic, sleeve of battery	BL	BL	BL	BL	BL
124	Silvery metal, contact plate of battery	BL	BL	BL	BL	NA
125	Black body, IC of battery PCB	BL	BL	BL	BL	BL
126	Black body, SMD diode of battery PCB	BL	BL	BL	BL	BL
127	Black / white body, SMD resistor of battery PCB	BL	BL	BL	BL	BL
128	Brown body, SMD capacitor of battery PCB	BL	BL	BL	BL	BL
129	White printed brown plastic with coppery metal, battery PCB	BL	BL	BL	BL	BL
130	Silvery solder, battery PCB	BL	BL	BL	BL	NA
131	White plastic, plug of battery	BL	BL	BL	BL	BL
132	Silvery metal, terminal of plug, battery	BL	BL	BL	BL	NA
133	Black soft plastic, wire jacket of battery	BL	BL	BL	BL	BL
134	Red soft plastic, wire jacket of battery	BL	BL	BL	BL	BL
135	Silvery metal, wire of battery	BL	BL	BL	BL	NA
136	Beige foam with adhesive, interlining of belly	BL	BL	BL	BL	BL
137	Transparent blue plastic, shell	BL	BL	BL	BL	BL
138	Blue plastic, button	BL	BL	BL	BL	BL
139	Translucent light green plastic, hook tape Velcro	BL	BL	BL	BL	BL
140	Dark blue flannel, body	BL	BL	BL	BL	BL



HONGKONG HUAXING INDUSTRIAL CO., LIMITED

Technical Report: **(9024)218-0336**

AUG 06, 2024

Page 76 of 90

Seq. No.	Tested Part(s)	Result(s)				
		Pb	Cd	Hg	Cr	Br
141	Pale green fabric, body	BL	BL	BL	BL	BL
142	Light green fabric, belly	BL	BL	BL	BL	BL
143	Orange embroidery, ears	BL	BL	BL	BL	BL
144	Blue plastic, frame	BL	BL	BL	BL	BL
145	Transparent blue plastic, LED shade	BL	BL	BL	BL	BL
146	White EVA with adhesive, pad of LED shade	BL	BL	BL	BL	BL
147	Transparent plastic, shell	BL	BL	BL	BL	BL
148	Light pink plastic, button	BL	BL	BL	BL	BL
149	Translucent white plastic, hook tape Velcro	BL	BL	BL	BL	BL
150	Beige white plush, body	BL	BL	BL	BL	BL
151	Beige white fabric, body	BL	BL	BL	BL	BL
152	Beige fabric, belly	BL	BL	BL	BL	BL
153	Brown embroidery, ears	BL	BL	BL	BL	BL
154	Pink embroidery, ears	BL	BL	BL	BL	BL
155	Light pink plastic, frame	BL	BL	BL	BL	BL
156	Transparent plastic, LED shade	BL	BL	BL	BL	BL

(1) Results were obtained by XRF for primary screening, and further chemical testing by ICP (for Cd, Pb, Hg), UV-Vis (for Cr(VI)) and GC-MS (for PBBs, PBDEs) are recommended to be performed, if the concentration exceeds the below warning value according to IEC 62321-3-1:2013.

Element	Unit	Non-metal	Metal	Composite Material
Cd	mg/kg	$BL \leq 70 - 3\sigma < X < 130 + 3\sigma \leq OL$	$BL \leq 70 - 3\sigma < X < 130 + 3\sigma \leq OL$	$LOD < X < 150 + 3\sigma \leq OL$
Pb	mg/kg	$BL \leq 700 - 3\sigma < X < 1300 + 3\sigma \leq OL$	$BL \leq 700 - 3\sigma < X < 1300 + 3\sigma \leq OL$	$BL \leq 500 - 3\sigma < X < 1500 + 3\sigma \leq OL$
Hg	mg/kg	$BL \leq 700 - 3\sigma < X < 1300 + 3\sigma \leq OL$	$BL \leq 700 - 3\sigma < X < 1300 + 3\sigma \leq OL$	$BL \leq 500 - 3\sigma < X < 1500 + 3\sigma \leq OL$
Cr	mg/kg	$BL \leq 700 - 3\sigma < X$	$BL \leq 700 - 3\sigma < X$	$BL \leq 500 - 3\sigma < X$
Br	mg/kg	$BL \leq 300 - 3\sigma < X$	--	$BL \leq 250 - 3\sigma < X$

Note:

- BL= Below Limit
- OL= Over Limit
- X = Inconclusive



HONGKONG HUAXING INDUSTRIAL CO.,LIMITED

Technical Report: **(9024)218-0336**

AUG 06, 2024

Page 77 of 90

- NA=Not Applicable

#=As claimed by the material declaration submitted by the client, the material of the sample No.107 is ceramic and glass. And according to RoHS directive 2011/65/EU and its amendments, Lead is exempted in 7(c)-I Electrical and electronic components containing lead in a glass or ceramic other than dielectric ceramic in capacitors (piezoelectronic devices) or in a glass or ceramic matrix compound.

(2) The XRF screening test for RoHS elements – The reading may be different to the actual content in the sample(s) be of non-uniformity composition.



HONGKONG HUAXING INDUSTRIAL CO.,LIMITED

Technical Report: **(9024)218-0336**

AUG 06, 2024

Page 78 of 90

(3) The maximum permissible limit is quoted from the document 2011/65/EU and its amendment.

RoHS Restricted Substances	Maximum Concentration Value (mg/kg) (by weight in homogenous materials)
Cadmium (Cd)	100
Lead (Pb)	1000
Mercury (Hg)	1000
Hexavalent Chromium (Cr(VI))	1000
Polybrominated biphenyls (PBBs)	1000
Polybrominate ddiphenylethers (PBDEs)	1000

Disclaimers

This XRF Screening report is for reference purposes only. The applicant shall make its/his/her own judgment as to whether the information provided in this XRF screening report is sufficient for its/his/her purposes.

The result shown in this XRF screening report will differ based on various factors, including but not limited to, the sample(s) size, thickness, area, surface flatness, equipment parameters and matrix effect (e.g. plastic, rubber, metal, glass, ceramic etc.). Further wet chemical pre-treatment with relevant chemical equipment analysis are required to obtain quantitative data.

The Test Results of Chemical Method

Lead content

Test Method: IEC 62321-5:2013

Test Instrument: Atomic Absorption Spectrophotometer (AAS)

Test item(s)	Unit	MDL	RoHS Limit	Result(s)		
				28	37	40
Lead (Pb)	mg/kg	10	1000	721		

Hexavalent Chromium content

Test Method: IEC 62321-7-1:2015

Test Instrument: Ultraviolet and Visible Spectrophotometer(UV-Vis)

Test item(s)	Unit	MDL	RoHS Limit	Result(s)		
				28	37	40
Chromium (VI)	µg/cm ²	0.10	See Remark	Negative	Negative	Negative

Test item(s)	Unit	MDL	RoHS Limit	Result(s)		
				60	89	91



HONGKONG HUAXING INDUSTRIAL CO., LIMITED

Technical Report: **(9024)218-0336**

AUG 06, 2024

Page 79 of 90

Chromium (VI)	µg/cm ²	0.10	See Remark	Negative	Negative	Negative
---------------	--------------------	------	------------	----------	----------	----------

Remark:

Sample Cr(VI) concentration (µg/cm ²)	Result(s)
< 0.10	Negative- The Cr(VI) concentration is below the limit of quantification. The coating is considered a non-Cr(VI) based coating.
0.10 – 0.13	Inconclusive- Unavoidable coating variations may influence the determination.
> 0.13	Positive- The Cr(VI) concentration is above the limit of quantification and the statistical margin of error. The sample coating is considered to contain Cr(VI).

PBBs&PBDEs content

Test Method: IEC 62321-6: 2015

Test Instrument: Gas Chromatography-Mass Spectrometer(GC-MS)

Test item(s)	Unit	MDL	Limit	Result(s)		
				73	107	111
Monobromobiphenyl	mg/kg	10	/	N.D.	N.D.	N.D.
Dibromobiphenyl	mg/kg	10	/	N.D.	N.D.	N.D.
Tribromobiphenyl	mg/kg	10	/	N.D.	N.D.	N.D.
Tetrabromobiphenyl	mg/kg	10	/	N.D.	N.D.	N.D.
Pentabromobiphenyl	mg/kg	10	/	N.D.	N.D.	N.D.
Hexabromobiphenyl	mg/kg	10	/	N.D.	N.D.	N.D.
Heptabromobiphenyl	mg/kg	10	/	N.D.	N.D.	N.D.
Octabromobiphenyl	mg/kg	10	/	N.D.	N.D.	N.D.
Nonabromodiphenyl	mg/kg	10	/	N.D.	N.D.	N.D.
Decabromodiphenyl	mg/kg	10	/	N.D.	N.D.	N.D.
Sum of PBBs	mg/kg	/	1000	N.D.	N.D.	N.D.
Monobromodiphenyl ether	mg/kg	10	/	N.D.	N.D.	N.D.
Dibromodiphenyl ether	mg/kg	10	/	N.D.	N.D.	N.D.
Tribromodiphenyl ether	mg/kg	10	/	N.D.	N.D.	N.D.
Tetrabromodiphenyl ether	mg/kg	10	/	N.D.	N.D.	N.D.
Pentabromodiphenyl ether	mg/kg	10	/	N.D.	N.D.	N.D.
Hexabromodiphenyl ether	mg/kg	10	/	N.D.	N.D.	N.D.



HONGKONG HUAXING INDUSTRIAL CO.,LIMITED

Technical Report: **(9024)218-0336**

AUG 06, 2024

Page 80 of 90

Test item(s)	Unit	MDL	Limit	Result(s)		
				73	107	111
Heptabromodiphenyl ether	mg/kg	10	/	N.D.	N.D.	N.D.
Octabromodiphenyl ether	mg/kg	10	/	N.D.	N.D.	N.D.
Nonabromodiphenyl ether	mg/kg	10	/	N.D.	N.D.	N.D.
Decabromodiphenyl ether	mg/kg	10	/	N.D.	N.D.	N.D.
Sum of PBDEs	mg/kg	/	1000	N.D.	N.D.	N.D.

(32)Phthalates content - Directive 2011/65/EU (RoHS) & its amendment Directive (EU) 2015/863.

Test Method IEC 62321-8: 2017

Test Instrument Gas Chromatography-Mass Spectrometer(GC-MS)

Test item(s)	Unit	MDL	RoHS Limit	Result(s)	
				1+2+3	4+5
Dibutyl Phthalate (DBP)	mg/kg	50	1000	N.D.	N.D.
Benzylbutyl Phthalate (BBP)	mg/kg	50	1000	N.D.	N.D.
Bis-(2-ethylhexyl)Phthalate (DEHP)	mg/kg	50	1000	N.D.	N.D.
Diisobutyl Phthalate (DIBP)	mg/kg	50	1000	N.D.	N.D.

Test item(s)	Unit	MDL	RoHS Limit	Result(s)	
				6+7+8	9+10+11
Dibutyl Phthalate (DBP)	mg/kg	50	1000	N.D.	N.D.
Benzylbutyl Phthalate (BBP)	mg/kg	50	1000	N.D.	N.D.
Bis-(2-ethylhexyl)Phthalate (DEHP)	mg/kg	50	1000	N.D.	N.D.
Diisobutyl Phthalate (DIBP)	mg/kg	50	1000	N.D.	N.D.



HONGKONG HUAXING INDUSTRIAL CO.,LIMITED

Technical Report: **(9024)218-0336**

AUG 06, 2024

Page 81 of 90

Test item(s)	Unit	MDL	RoHS Limit	Result(s)	
				12+13+14	16
Dibutyl Phthalate (DBP)	mg/kg	50	1000	N.D.	N.D.
Benzylbutyl Phthalate (BBP)	mg/kg	50	1000	N.D.	N.D.
Bis-(2-ethylhexyl)Phthalate (DEHP)	mg/kg	50	1000	N.D.	N.D.
Diisobutyl Phthalate (DIBP)	mg/kg	50	1000	N.D.	N.D.

Test item(s)	Unit	MDL	RoHS Limit	Result(s)	
				17+18	22+23+24
Dibutyl Phthalate (DBP)	mg/kg	50	1000	N.D.	N.D.
Benzylbutyl Phthalate (BBP)	mg/kg	50	1000	N.D.	N.D.
Bis-(2-ethylhexyl)Phthalate (DEHP)	mg/kg	50	1000	N.D.	N.D.
Diisobutyl Phthalate (DIBP)	mg/kg	50	1000	N.D.	N.D.

Test item(s)	Unit	MDL	RoHS Limit	Result(s)	
				25+26+27	30+31+32
Dibutyl Phthalate (DBP)	mg/kg	50	1000	N.D.	N.D.
Benzylbutyl Phthalate (BBP)	mg/kg	50	1000	N.D.	N.D.
Bis-(2-ethylhexyl)Phthalate (DEHP)	mg/kg	50	1000	N.D.	N.D.
Diisobutyl Phthalate (DIBP)	mg/kg	50	1000	N.D.	N.D.

Test item(s)	Unit	MDL	RoHS Limit	Result(s)	
				35+48	38+39+42
Dibutyl Phthalate (DBP)	mg/kg	50	1000	N.D.	N.D.
Benzylbutyl Phthalate (BBP)	mg/kg	50	1000	N.D.	N.D.
Bis-(2-ethylhexyl)Phthalate (DEHP)	mg/kg	50	1000	N.D.	N.D.
Diisobutyl Phthalate (DIBP)	mg/kg	50	1000	N.D.	N.D.

Test item(s)	Unit	MDL	RoHS Limit	Result(s)	
				52+53+63	56+57+61



HONGKONG HUAXING INDUSTRIAL CO., LIMITED

Technical Report: **(9024)218-0336**

AUG 06, 2024

Page 82 of 90

Test item(s)	Unit	MDL	RoHS Limit	Result(s)	
				52+53+63	56+57+61
Dibutyl Phthalate (DBP)	mg/kg	50	1000	N.D.	N.D.
Benzylbutyl Phthalate (BBP)	mg/kg	50	1000	N.D.	N.D.
Bis-(2-ethylhexyl)Phthalate (DEHP)	mg/kg	50	1000	N.D.	N.D.
Diisobutyl Phthalate (DIBP)	mg/kg	50	1000	N.D.	N.D.

Test item(s)	Unit	MDL	RoHS Limit	Result(s)	
				65+79+80	66+69+71
Dibutyl Phthalate (DBP)	mg/kg	50	1000	N.D.	N.D.
Benzylbutyl Phthalate (BBP)	mg/kg	50	1000	N.D.	N.D.
Bis-(2-ethylhexyl)Phthalate (DEHP)	mg/kg	50	1000	N.D.	N.D.
Diisobutyl Phthalate (DIBP)	mg/kg	50	1000	N.D.	N.D.

Test item(s)	Unit	MDL	RoHS Limit	Result(s)	
				68+73+74	76+77+83
Dibutyl Phthalate (DBP)	mg/kg	50	1000	N.D.	N.D.
Benzylbutyl Phthalate (BBP)	mg/kg	50	1000	N.D.	N.D.
Bis-(2-ethylhexyl)Phthalate (DEHP)	mg/kg	50	1000	N.D.	N.D.
Diisobutyl Phthalate (DIBP)	mg/kg	50	1000	N.D.	N.D.

Test item(s)	Unit	MDL	RoHS Limit	Result(s)	
				82+85+86	88+90+92
Dibutyl Phthalate (DBP)	mg/kg	50	1000	N.D.	N.D.
Benzylbutyl Phthalate (BBP)	mg/kg	50	1000	N.D.	N.D.
Bis-(2-ethylhexyl)Phthalate (DEHP)	mg/kg	50	1000	N.D.	N.D.
Diisobutyl Phthalate (DIBP)	mg/kg	50	1000	N.D.	N.D.

Test item(s)	Unit	MDL	RoHS Limit	Result(s)	
				94+98+100	101+105+106



HONGKONG HUAXING INDUSTRIAL CO., LIMITED

Technical Report: **(9024)218-0336**

AUG 06, 2024

Page 83 of 90

Test item(s)	Unit	MDL	RoHS Limit	Result(s)	
				94+98+100	101+105+106
Dibutyl Phthalate (DBP)	mg/kg	50	1000	N.D.	N.D.
Benzylbutyl Phthalate (BBP)	mg/kg	50	1000	N.D.	N.D.
Bis-(2-ethylhexyl)Phthalate (DEHP)	mg/kg	50	1000	N.D.	N.D.
Diisobutyl Phthalate (DIBP)	mg/kg	50	1000	N.D.	N.D.

Test item(s)	Unit	MDL	RoHS Limit	Result(s)	
				103+108+111	113+115+116
Dibutyl Phthalate (DBP)	mg/kg	50	1000	N.D.	N.D.
Benzylbutyl Phthalate (BBP)	mg/kg	50	1000	N.D.	N.D.
Bis-(2-ethylhexyl)Phthalate (DEHP)	mg/kg	50	1000	N.D.	N.D.
Diisobutyl Phthalate (DIBP)	mg/kg	50	1000	N.D.	N.D.

Test item(s)	Unit	MDL	RoHS Limit	Result(s)	
				118+119	121+122+123
Dibutyl Phthalate (DBP)	mg/kg	50	1000	N.D.	N.D.
Benzylbutyl Phthalate (BBP)	mg/kg	50	1000	N.D.	N.D.
Bis-(2-ethylhexyl)Phthalate (DEHP)	mg/kg	50	1000	80	59
Diisobutyl Phthalate (DIBP)	mg/kg	50	1000	N.D.	N.D.

Test item(s)	Unit	MDL	RoHS Limit	Result(s)	
				125+126+129	131+133+134
Dibutyl Phthalate (DBP)	mg/kg	50	1000	N.D.	N.D.
Benzylbutyl Phthalate (BBP)	mg/kg	50	1000	N.D.	N.D.
Bis-(2-ethylhexyl)Phthalate (DEHP)	mg/kg	50	1000	N.D.	105
Diisobutyl Phthalate (DIBP)	mg/kg	50	1000	N.D.	N.D.

Test item(s)	Unit	MDL	RoHS Limit	Result(s)	
				136	137+138+139



HONGKONG HUAXING INDUSTRIAL CO.,LIMITED

Technical Report: **(9024)218-0336**

AUG 06, 2024

Page 84 of 90

Test item(s)	Unit	MDL	RoHS Limit	Result(s)	
				136	137+138+139
Dibutyl Phthalate (DBP)	mg/kg	50	1000	N.D.	N.D.
Benzylbutyl Phthalate (BBP)	mg/kg	50	1000	N.D.	N.D.
Bis-(2-ethylhexyl)Phthalate (DEHP)	mg/kg	50	1000	62	N.D.
Diisobutyl Phthalate (DIBP)	mg/kg	50	1000	N.D.	N.D.

Test item(s)	Unit	MDL	RoHS Limit	Result(s)	
				140+141+142	143+153+154
Dibutyl Phthalate (DBP)	mg/kg	50	1000	N.D.	N.D.
Benzylbutyl Phthalate (BBP)	mg/kg	50	1000	N.D.	N.D.
Bis-(2-ethylhexyl)Phthalate (DEHP)	mg/kg	50	1000	N.D.	N.D.
Diisobutyl Phthalate (DIBP)	mg/kg	50	1000	N.D.	N.D.

Test item(s)	Unit	MDL	RoHS Limit	Result(s)	
				144+145+146	147+148
Dibutyl Phthalate (DBP)	mg/kg	50	1000	N.D.	N.D.
Benzylbutyl Phthalate (BBP)	mg/kg	50	1000	N.D.	N.D.
Bis-(2-ethylhexyl)Phthalate (DEHP)	mg/kg	50	1000	N.D.	N.D.
Diisobutyl Phthalate (DIBP)	mg/kg	50	1000	N.D.	N.D.

Test item(s)	Unit	MDL	RoHS Limit	Result(s)	
				149	150+151
Dibutyl Phthalate (DBP)	mg/kg	50	1000	N.D.	N.D.
Benzylbutyl Phthalate (BBP)	mg/kg	50	1000	N.D.	N.D.
Bis-(2-ethylhexyl)Phthalate (DEHP)	mg/kg	50	1000	N.D.	N.D.
Diisobutyl Phthalate (DIBP)	mg/kg	50	1000	N.D.	N.D.



HONGKONG HUAXING INDUSTRIAL CO., LIMITED

Technical Report: **(9024)218-0336**

AUG 06, 2024

Page 85 of 90

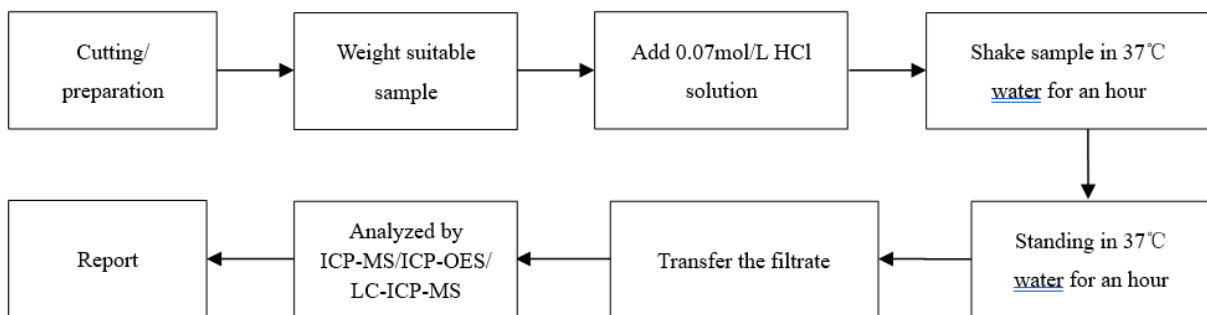
Test item(s)	Unit	MDL	RoHS Limit	Result(s)
				155+156
Dibutyl Phthalate (DBP)	mg/kg	50	1000	N.D.
Benzybutyl Phthalate (BBP)	mg/kg	50	1000	N.D.
Bis-(2-ethylhexyl)Phthalate (DEHP)	mg/kg	50	1000	N.D.
Diisobutyl Phthalate (DIBP)	mg/kg	50	1000	N.D.

Note:

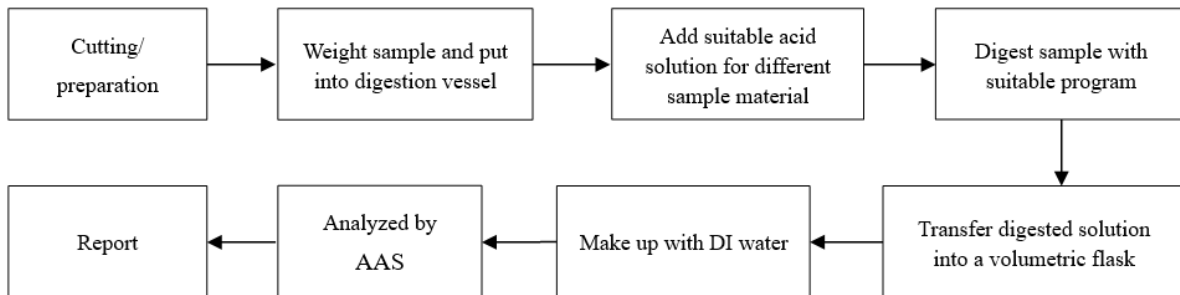
- mg/kg=milligram per kilogram
- $\mu\text{g}/\text{cm}^2$ = Micrograms per square centimeter
- N.D. =Not Detected (<MDL)
- N.A. = Not Applicable
- MDL=Method Detection Limit
- The soluble test results shown of item (3)& (4)& (5) are of the adjusted analytical results.
- As specified by client, the mixed testing were conducted.
- As specified by client, only above test part(s) were analyzed.
- Since the sample weight of the component 13,143,153,154 was less than 0.2g, according to test method ISO 14362-1: 2017, Section 9.2, Azo colorants content analysis were not applicable.

Appendix

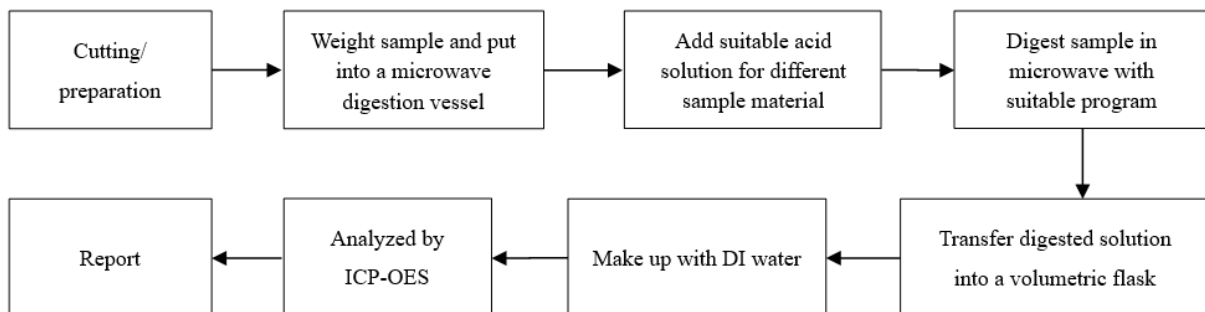
1. Test flowchart for soluble elements content:



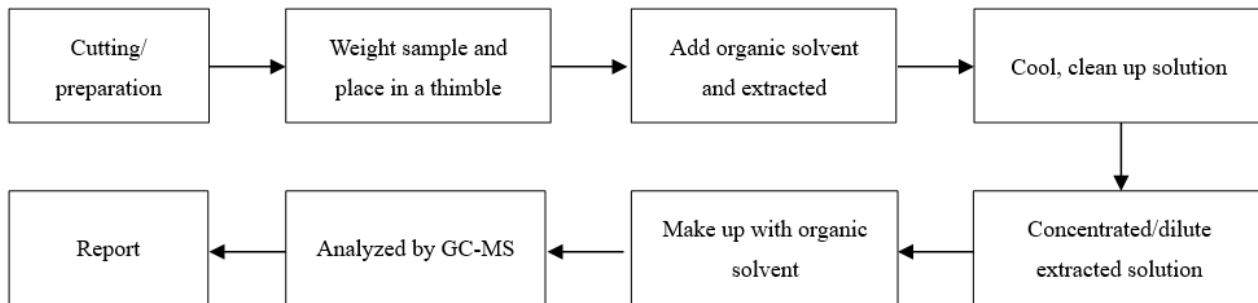
2. Test flowchart for Pb/Cd content:



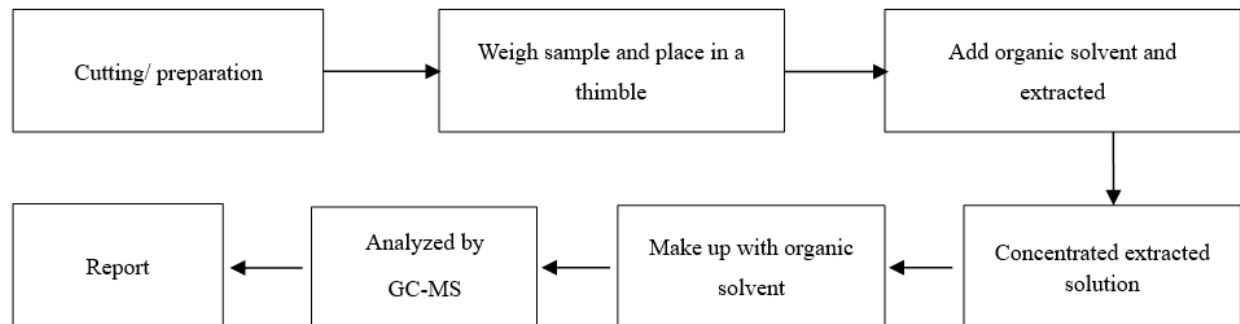
3. Test flowchart for Hg content:



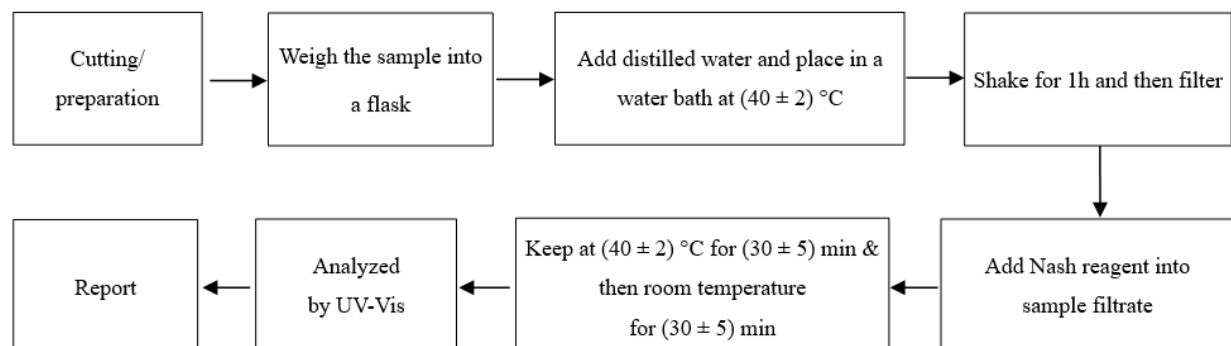
4. Test flowchart for Phthalates/ PAHs content:



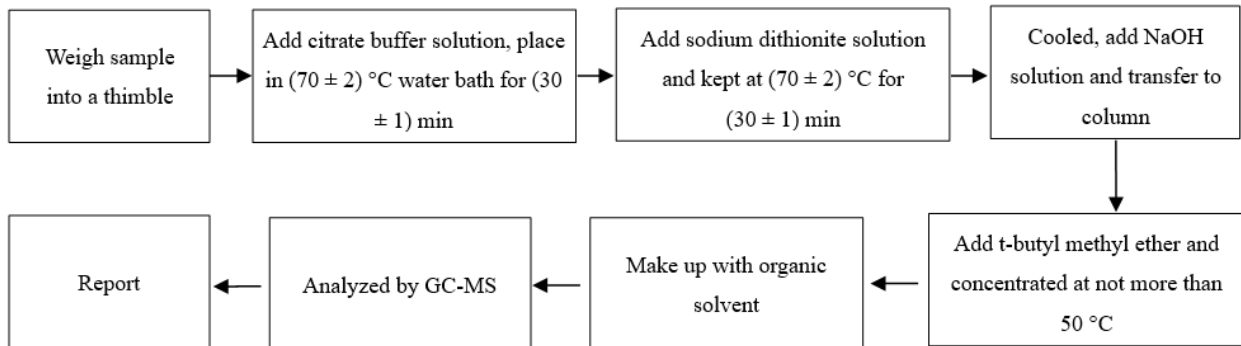
5. Test flowchart for SCCP content:



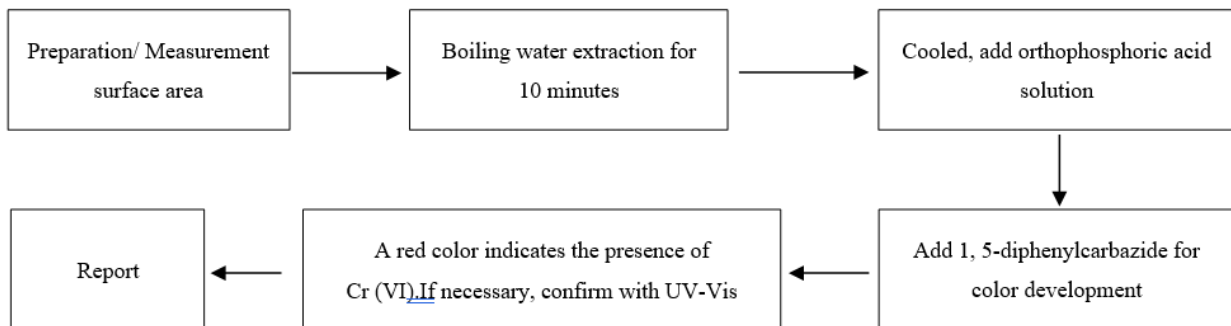
6. Test flowchart for Formaldehyde content:



7. Test flowchart for AZO content:



8. Test flowchart for Cr⁶⁺ content in metallic material:



9. Test flowchart for PBBs & PBDEs content:

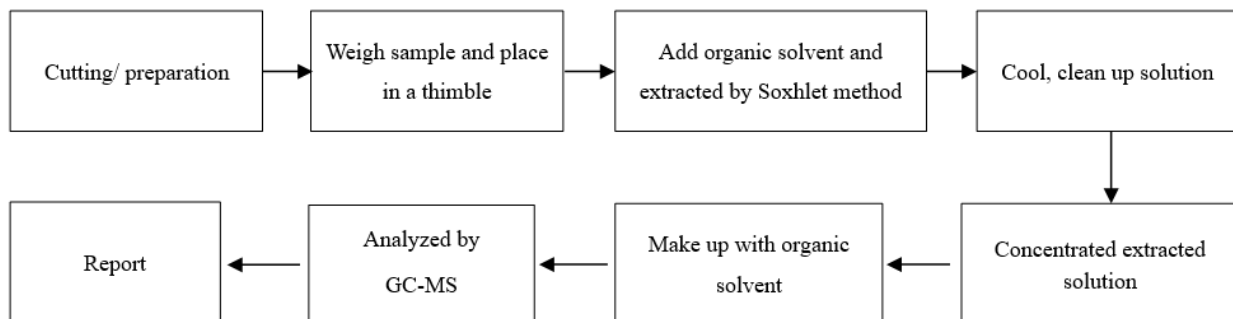


EXHIBIT # 1



EXHIBIT # 2

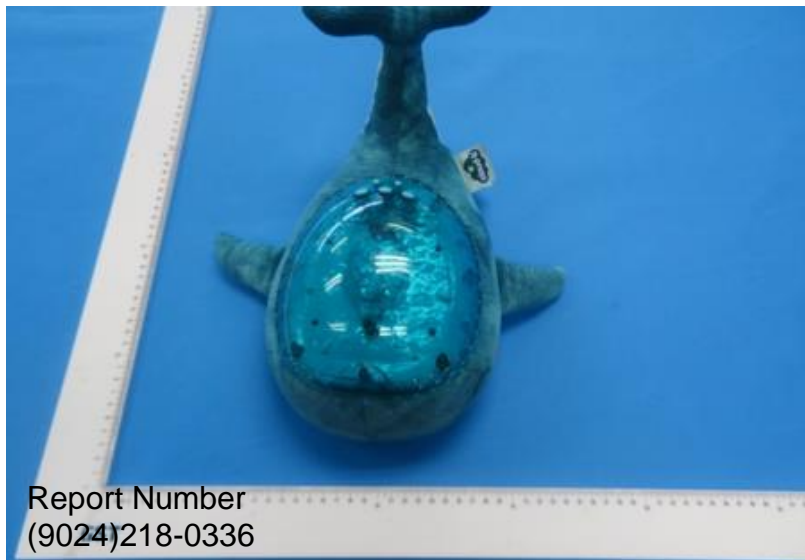


EXHIBIT # 3



End of report